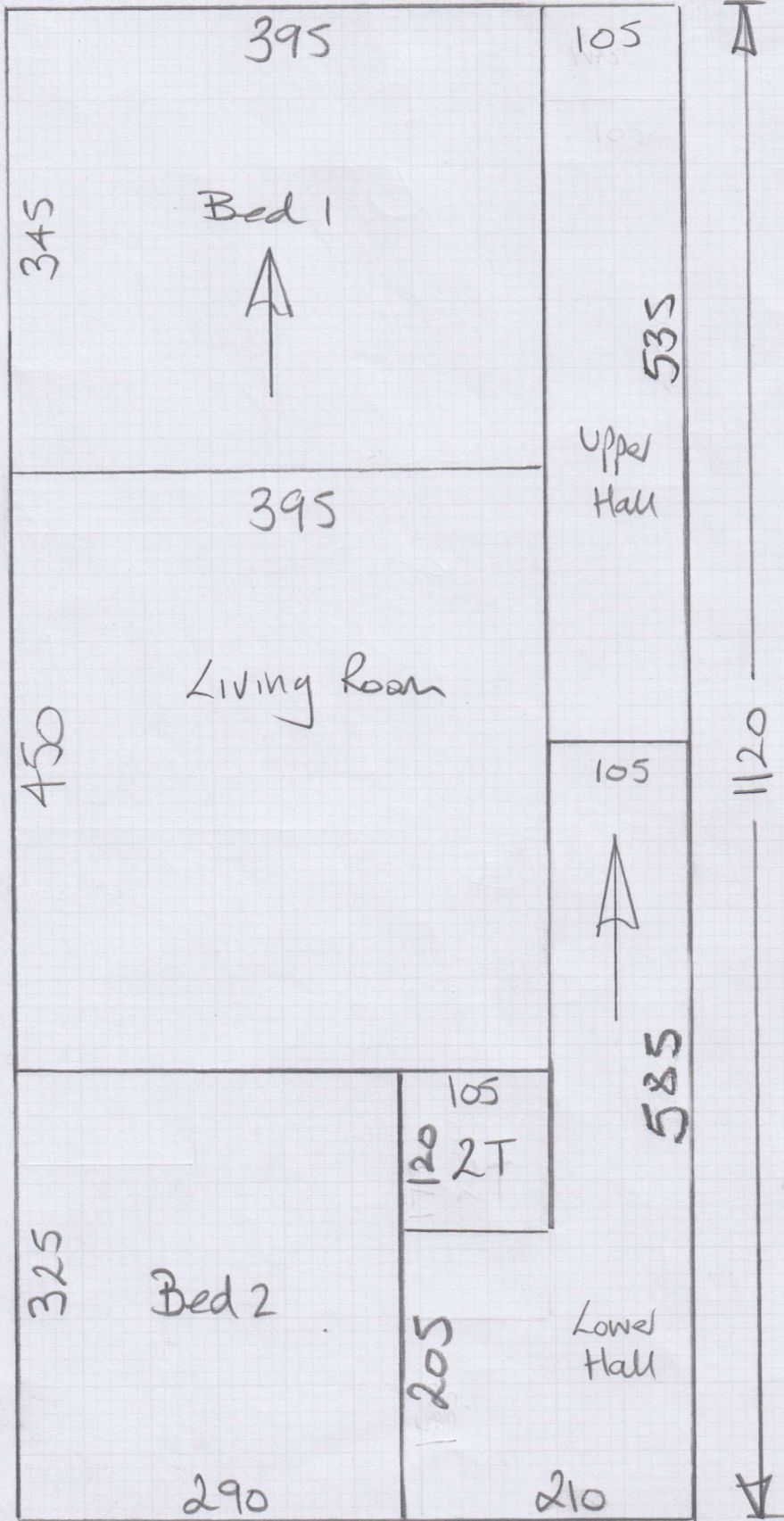


# \*Keys from Putney Shop

Job No: P29177  
 Name: Balmer  
 Address:  
 Tel: **(073)**  
 Sheet:



EASYcare Twist  
Col. EASY-39

Cut Plan 1120x500  
 = 56M<sup>2</sup>

Designatex 2143  
Col. Honey Lined Ash  
 Kitchen 430x400  
 = 17.20M<sup>2</sup>

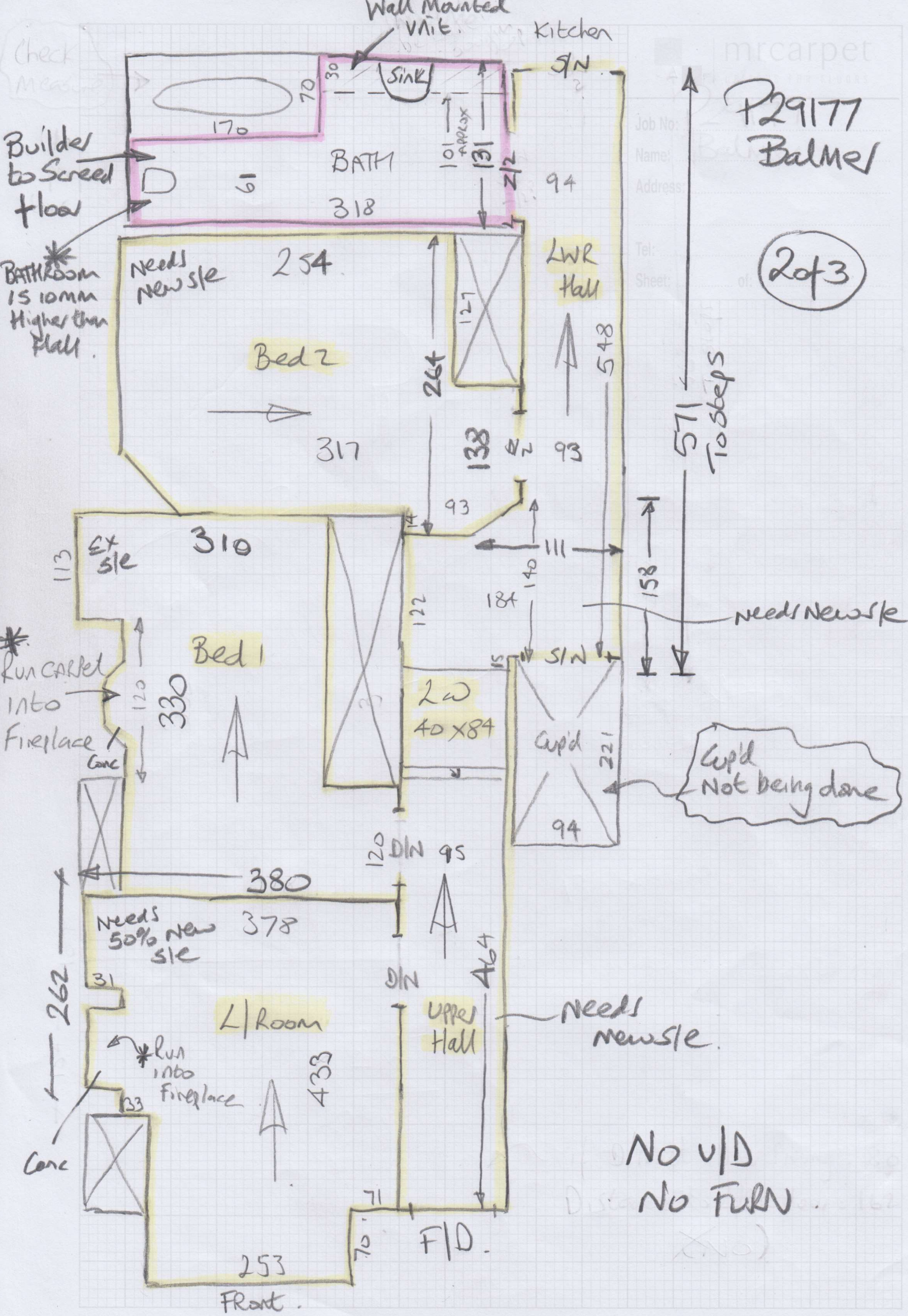
Ultimate Tones  
Col. Glandan 5092

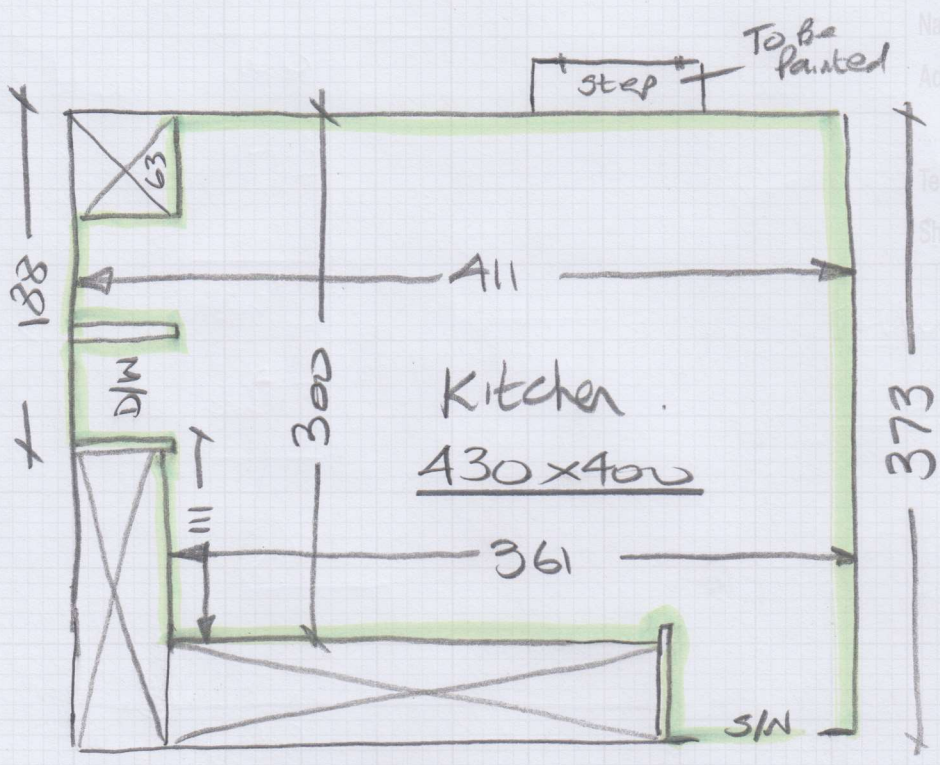
BATH 135x400  
 = 5.40M<sup>2</sup>

\* Do Not order  
 Bathroom Vinyl until  
 after check measure

Job No: P29177  
Name: Balmer  
Address:

Tel:  
Sheet: of 2 of 3





Lower  
Hall

- \* Screed over Builders plywood with F Balls Stopgap 500 Micro Coat.
- \* Also, Skim over Builders Screed in Bathroom to smooth out ripples in the V Screed.

Full 0



# STOPGAP 500 MICRO

## Floor Finishing Compound

Screed classification: CT-C16-F6 to EN 13813:2002



Scan to view the product demonstration video



### PRODUCT DATA

#### INTRODUCTION

**STOPGAP 500** is a rapid drying floor finishing compound providing a smooth surface to plywood, existing floor smoothing underlayments, sand / cement screeds, calcium sulphate screeds and other rigid dry absorbent surfaces, prior to the installation of floorcoverings.

STOPGAP 500 is dimensionally stable and is supplied as a pre-blended dry powder, which is designed for Micro-Coat application to a feathered edge. It is protein-free which allows it to be used in biologically sensitive areas.

#### COVERAGE

A 4kg unit of STOPGAP 500 mixed with 2.25 litres of clean water will cover approximately 4.5m<sup>2</sup> at a thickness of 1mm.

An 8kg unit of STOPGAP 500 mixed with 4.5 litres of clean water will cover approximately 9m<sup>2</sup> at a thickness of 1mm.



#### FEATURES

- Rapid drying
- Protein free
- Suitable over plywood joints
- Suitable for light to medium traffic areas
- Trowel applied
- Can be used to form a feathered edge
- Low odour

#### EN 13813:2002

The above standard refers to the properties and performance of the product and the specification to which it has been tested. The data shown confirms the minimum compressive and flexural strengths that the product will achieve.

#### PACKAGES

4kg eco pouch  
8kg eco pouch

#### HOW MUCH MATERIAL?

APPLIED THICKNESS	COVERAGE PER 4KG UNIT	COVERAGE PER 8KG UNIT	CONSUMPTION PER 50m <sup>2</sup> AREA
Micro-Coat	18m <sup>2</sup>	36m <sup>2</sup>	1 x 4kg pouch + 1 x 8kg pouch
1mm	4.5m <sup>2</sup>	9m <sup>2</sup>	5.5 x 8kg pouches

#### TECHNICAL INFORMATION

EN 13813 Class Designation	CT-C16-F6
Working Time @ 20°C	15-20 minutes
Walk on hardness time @ 20°C	25 mins Micro-Coat
Ready to receive floor smoothing compounds	25 mins Micro-Coat
Compressive Strength N/mm <sup>2</sup> (EN 13892-2)	1 Day >5.0
	7 Days >10.0
	28 Days >16.0
Flexural Strength N/mm <sup>2</sup> (EN 13892-2)	1 Day >2.0
	7 Days >4.0
	28 Days >6.0
Consumption per mm thickness	0.99 kg / m <sup>2</sup>
Application thickness	Micro-Coat to 1mm

## SURFACE PREPARATION

Floor surfaces must be suitably prepared: sound, dry (<75%RH) and free from contaminants that may prevent adhesion.

Concrete, sand/cement screeds and calcium sulphate screeds must be fully cured and any laitance or surface treatments must be removed. The temperature of the floor must be maintained above 5°C throughout the application and drying of the underlayment.

For detailed information, request the F. Ball Subfloor Preparation Guide.

## PRIMING

No priming is necessary.

## MIXING

Mix by volume 2 parts of powder to 1 part clean water by hand. Always ensure that the powder is added to the water and mixed to form a stiff consistency free from any lumps. Mix only sufficient material that can be applied within the specified working time.

## Water addition

If mixing a full unit, do not exceed the recommended water addition rates quoted.

## APPLICATION

Scratch the material out evenly over the prepared area to provide a smooth uniform surface, free from imperfections. Best results will be achieved by application at a Micro-Coat thickness (less than 1mm).

STOPGAP 500 is not suitable in areas subject to rapid temperature changes such as conservatories, except when applied only to remove screwheads and plywood sheet board joints.

## SETTING

STOPGAP 500 will be sufficiently dry to allow installation of floorcoverings after 25 minutes at a Micro-Coat thickness (less than 1mm). Low temperatures will extend this time.

Where increased thickness is required, the set and drying times will be extended.

## TOOLS

Suitable steel smoothing trowel, mixing bucket.

Wash tools with water immediately after use.

## STORAGE

This product must be stored under cover, in unopened pouches clear of the ground in cool dry conditions, protected from frost and excessive draught.

## SHELF LIFE

12 months in unopened pouches and stored under good conditions.

## HEALTH & SAFETY ADVICE

This product is classified. Obtain the relevant Safety Data Sheet and follow the advice given.

These can be found at [www.f-ball.co.uk](http://www.f-ball.co.uk) alternatively they can be obtained from the point of purchase or from F. Ball and Co. Ltd. at the address below.

Site conditions vary, to ensure this product is suitable and confirm this data sheet is current, please contact Technical Service Department.

For further information about F. Ball products or more detailed technical assistance, please contact:



F. Ball and Co. Ltd.

Churnetside Business Park  
Station Road, Cheddleton, Leek  
Staffordshire ST13 7RS  
United Kingdom

Tel: +44 (0) 1538 361633

Email: [mail@f-ball.co.uk](mailto:mail@f-ball.co.uk)

[www.f-ball.co.uk](http://www.f-ball.co.uk)

