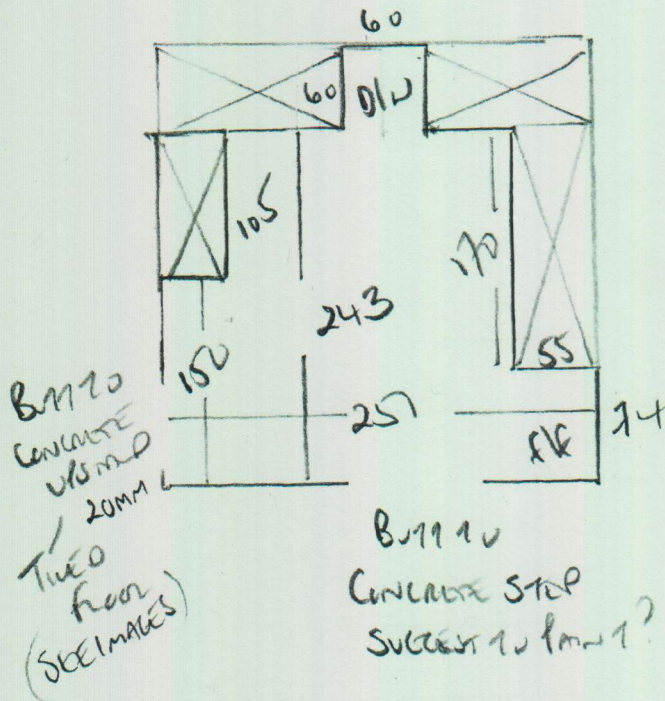


* CONFIRM LAYING DIRECTION BEFORE FIXING DOWN

P29416
BAYLEY
133 CRESCENT LANE
SW4 8EA

(1 of 1)



MODULATED DRY BACK

'SEALER' JOINTSTONE

CELROR A6982

329mm x 659mm

2 BOXES 2.89m²

= 7.80m²

3MM SKIM COAT OF 1200 PRO OVER BUILDUP SEALED
B111 LINES TO CONCRETE UPSTAND IN 2 x DIRECTIONS

1 x DISHWASHER PUMBED IN - TO BE DISCONNECTED
HEATING MUST BE OFF AS THIS PRIOR TO FINISH
AND TURNED ON AS THIS AFTER FINISH IN INCREMENTS
OF 5° PER DAY.