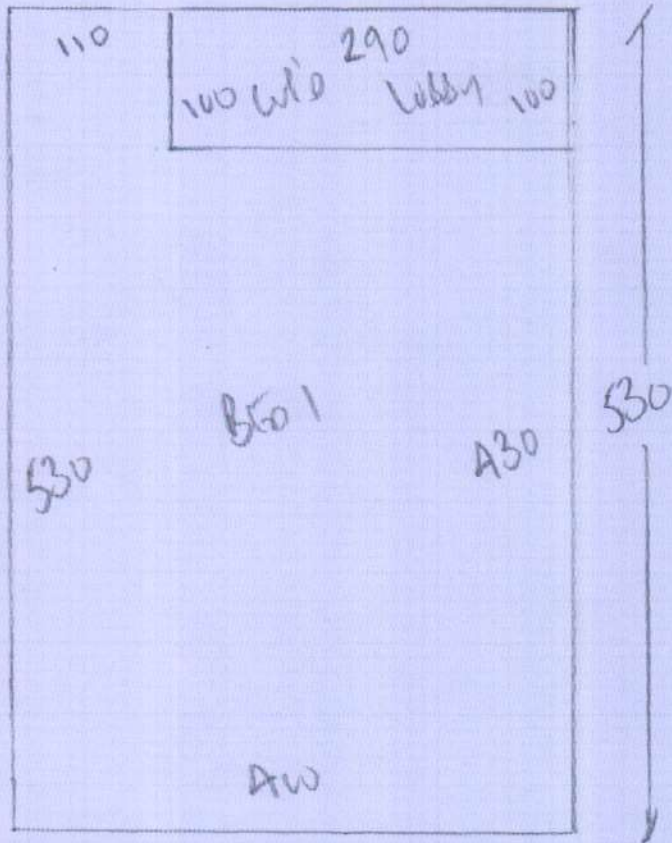


127 Ebury St. Development



R17518

FARAHATI

FAT 1

127 Ebury St

SW 1/4 900

1 of 2

Tribunal

Case 902

PLAN 530 x 400

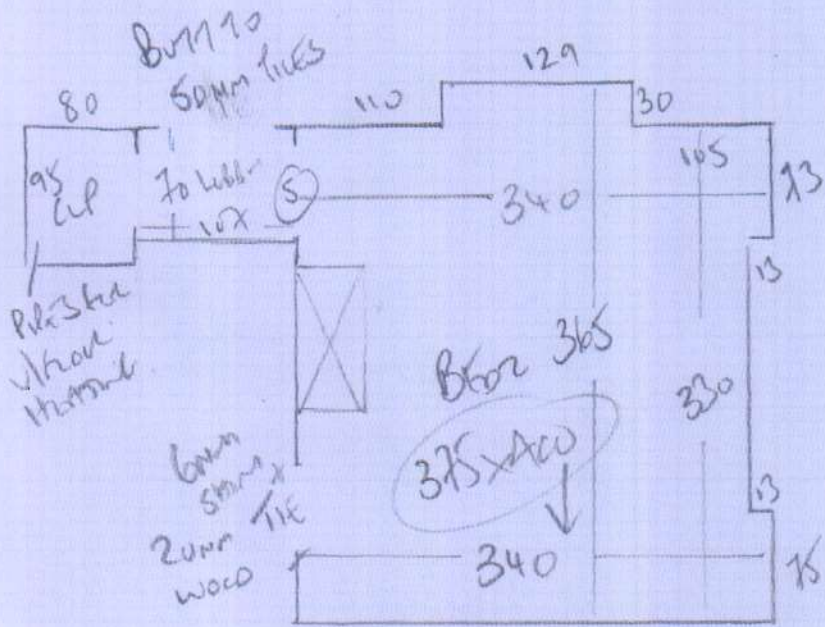
B602 375 x 400

905 x 400

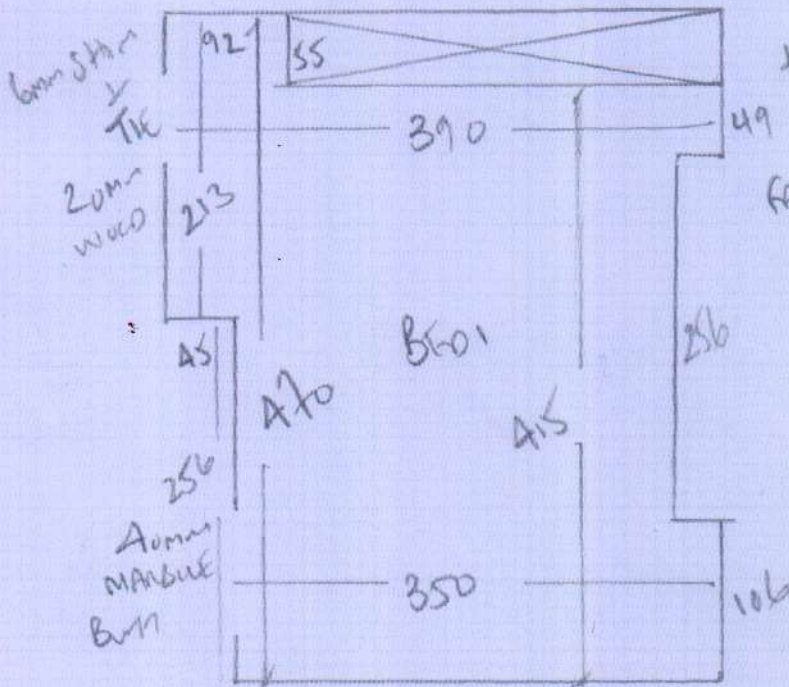
3620m²

1 of 2

127 Ebury St Development



R17518
 FARAHATI
 FLOOR 1 (BASEMENT)
 127 Ebury St
 SW1W 9QU
 242



SUBJECT TO CUSTOMER
 TO POINT FRONT OF MARBLE
 & WE CAN BURN CARPET
 TO TILES —
 FAR TOO HIGH FOR EASY STRIPS
 = = = =

Concrete floors

UNDER floor Heating (water filled) MUST Stick Gutter !!
 Low to ground underlay required.
 Polished Ai. Decks

2022