

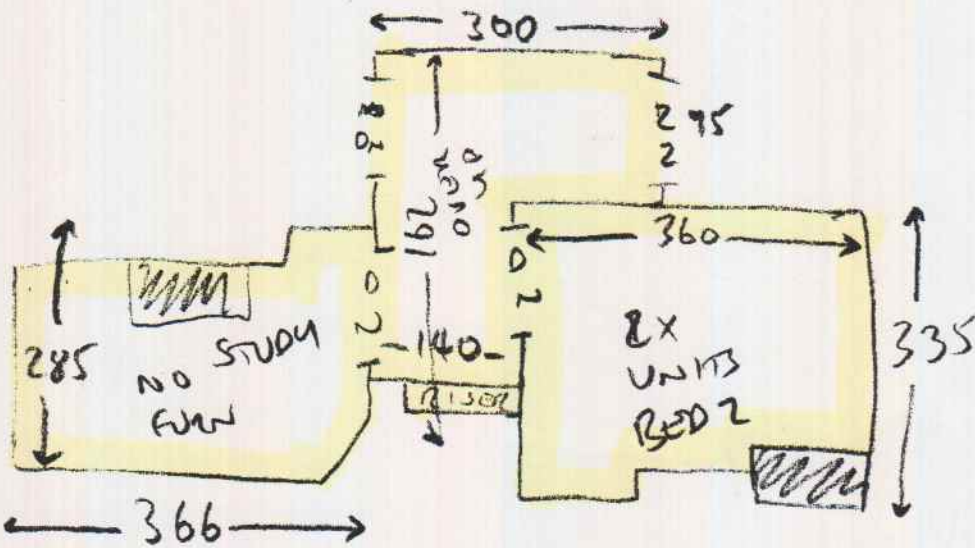


SILVER BARS
 UPFAST NEAR
 NEW U/LAM
 + GRIPPER TO
 MAIN STMS

- T/L = 155 OR x 94
- 5 x STMS = 45 x 74
- W1 = 60 x 84
- W2 = 64 x 104
- W3 = 64 x 71
- 6 x STMS = 45 x 73

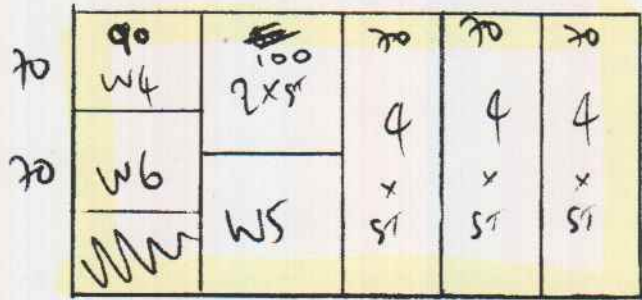
DAY 1
 25/1/19

UPFAST +
 TEMPLATE
 ONLY
 FIT
 EVERY
 THING
 ELSE



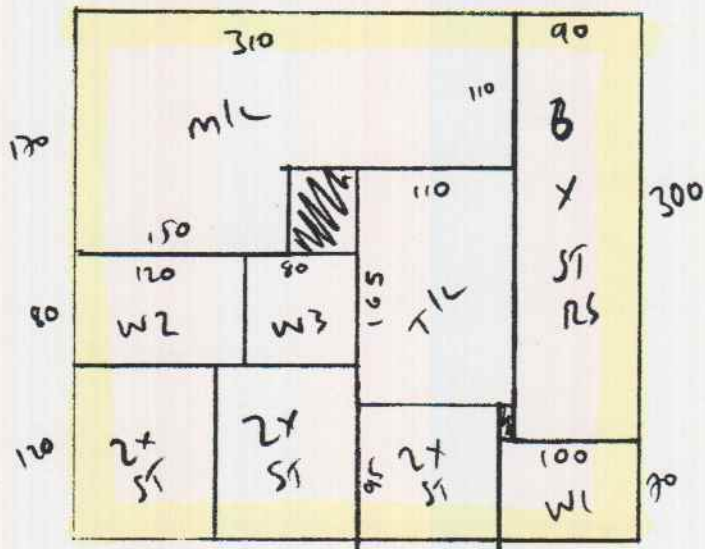
- ~~6 1/2 STMS = 43 x 78~~
- ~~W4 = 60 x 88~~
- ~~W5 = 68 x 110~~
- ~~W6 = 65 x 75~~
- ~~5 x STMS = 42 x 78~~
- ~~BIN = 40 x 93~~

~~RUNNER
 IN
 STRIP~~ - ~~RUNNER
 WIDTH
 TBC~~



200x400
FIF/NNNER

TEMP PLATE
ONLY



WTS

COTSWOLD NORTHLEACH

PLAN = 3.70 x 4m

STUDY = 3m x 4m

BED 2 = 3.45 x 4m

DAY 1
25/1/19
FIT ALL AREAS
+ UPST H/F/STAIRS
+ TEMP PLATE
RUNNER