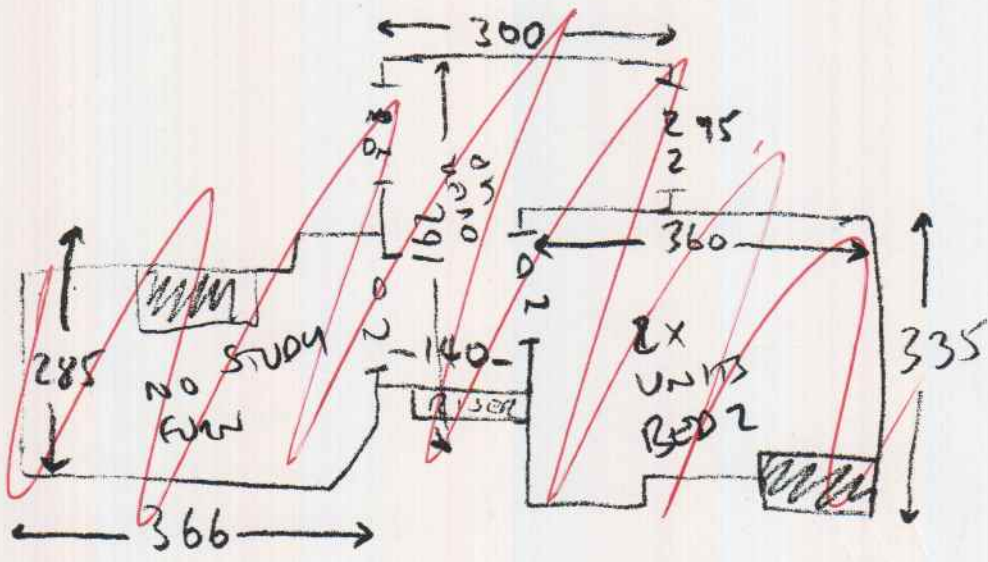


SILVER BARS
 UPFAST NEAR
 NEW ULAM
 + GRIPPER TO
 MAIN STMS

DAY
 2
 FIT RUNNER
 ONLY
 8/2/19



- T/L = 155 OR x 94
- 5 x STMS = 45 x 74
- W1 = 60 x 84
- W2 = 64 x 104
- W3 = 64 x 71
- 6 x STMS = 45 x 73



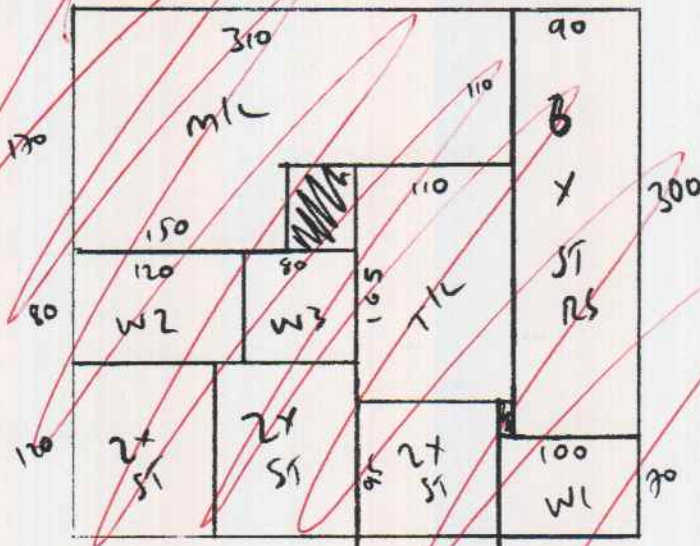
- 6 1/2 STMS = 43 x 78
- W4 = 60 x 88
- W5 = 68 x 110
- W6 = 65 x 75
- 5 x STMS = 42 x 78
- BIN = 40 x 93

runner
 IN
 STRAPE

~~runner
 width
 TBC~~

70	90 W4	100 2x5	70 4	70 4	70 4
70	W6	W5	x 5	x 5	x 5

200x400
FIT RUNNER



~~CUTS~~

~~COTSWOLD NORTHLEACH~~

~~PLAN = 3.70 x 4m~~

~~STUDY = 3m x 4m~~

~~BED2 = 3.45 x 4m~~

DAY

2

8/2/19

FIT
RUNNER
ONLY