

$$TIC = 12602 \times 180 -$$

$$1 \times STR = 48 \times 70 -$$

$$W1 = 61 \times 80 -$$

$$W2 = 66 \times 106 -$$

$$W3 = 70 \times 77 -$$

$$2 \times STRS = 48 \times 80$$

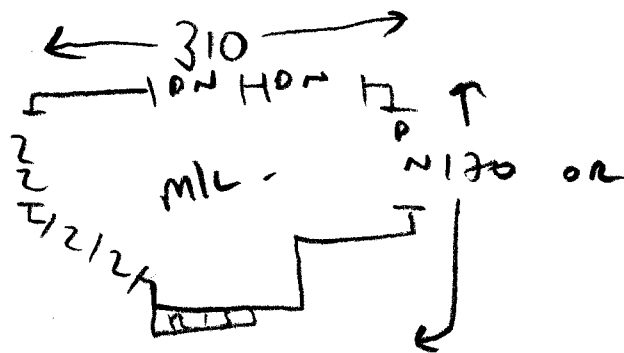
$$W4 = 65 \times 92 -$$

$$W5 = 73 \times 107 -$$

$$W6 = 63 \times 67 -$$

$$2 \times STRS = 43 \times 70 -$$

$$BIN = 48 \times 92$$



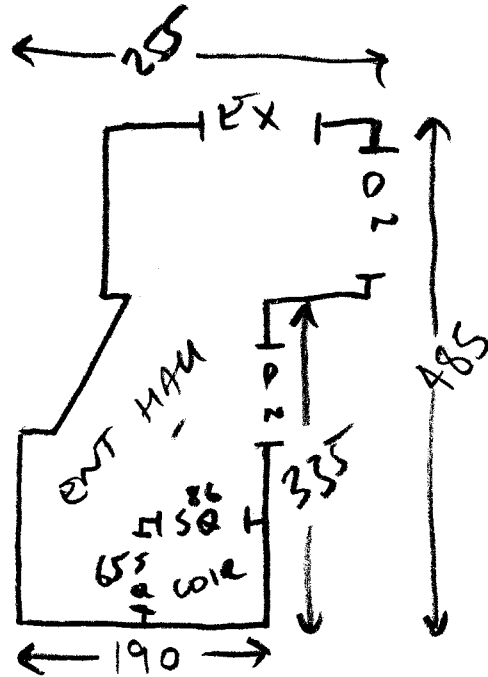
$$1 \times STR = 41 \times 82 -$$

$$W7 = 62 \times 93 -$$

$$W8 = 68 \times 114 -$$

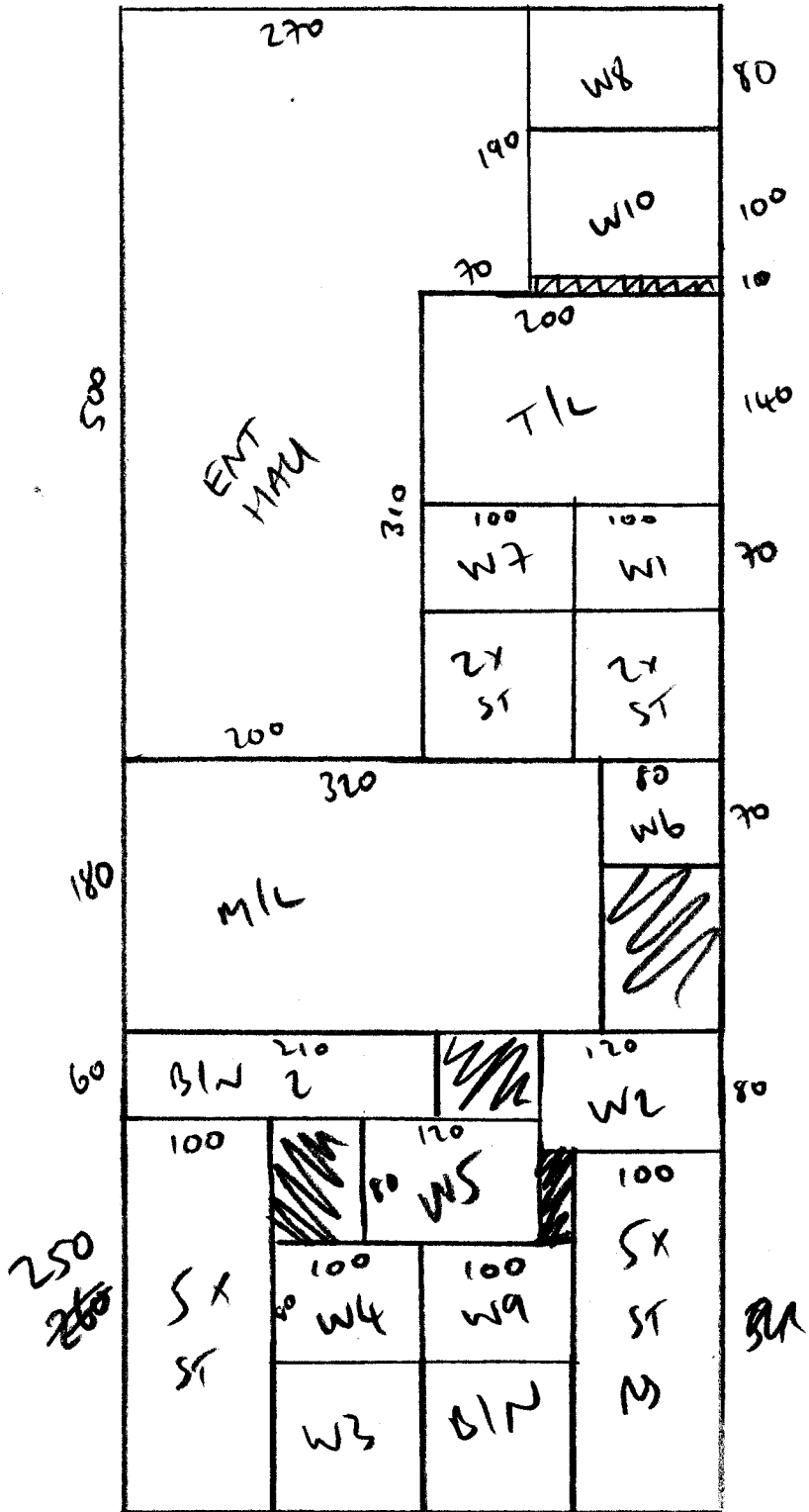
$$W9 = 65 \times 77 -$$

$$8 \times STRS = 40 \times 81 \times$$



$$W10 = 90 \times 110 -$$

$$BIN 2 = 40 \times 195 -$$



9.90 x 4.00  
 39.60