



Technical

54

Post fit cleaning tips: See page 92



Product

- The Premier Two Way Ramp range of door bars are manufactured using a base material of solid brass for a high quality installation.
- The Premier Two Way Ramp range are available in three lengths: 90cm, 180cm and 270cm.

Fitting

- The Premier Two Way Ramp range are for use on 'Non Porous' installations which have a height difference and each product covers two different heights by simply turning the Two Way Ramp around.

ANY QUESTIONS
Please call 01207 591176 For friendly expert advice.

Stick Down or Floating Installations

- On an installation where one surface is stick down and the other is floating, or both surfaces float, use the Two Way Ramp. Can also be used in a 'No Float' situation.
- **NOTE: For expansion information consult the flooring manufacturers specifications.**

Stick down the wide surface
for a 2mm lift.



Stick down the wide surface
for a 4mm lift.



Stick down the wide surface
for a 6mm lift.



Stick down the wide surface
for a 8mm lift.



Stick down the narrow
surface for a 3mm lift.



Stick down the narrow
surface for a 5mm lift.



Stick down the narrow
surface for a 7mm lift.



Stick down the narrow
surface for a 9mm lift.



Get your Drop Checker



Ask your Stairrods UK Sales Representative.

Care and Maintenance

- Satin Brass and Polished Brass Trims Lemon wipes will remove light tarnishing. However to keep the brass like new these two finishes will need to be polished from time to time with a propriety brass polish. Ensure that you follow the instructions on the tin and protect your flooring during polishing.
- Satin Nickel, Chrome, and Brushed Chrome Lemon wipes will remove light tarnishing. These finishes will need to be polished from time to time with a propriety metal polish. Ensure that you follow the instructions on the tin and protect your flooring during polishing.
- Pewter, Antique Bronze and Antique Brass Lemon wipes will remove light tarnishing. If these finishes become contaminated the only option is to polish them with a propriety metal polish and allow them to age again naturally. Ensure that you follow the instructions on the tin and protect your flooring during polishing.

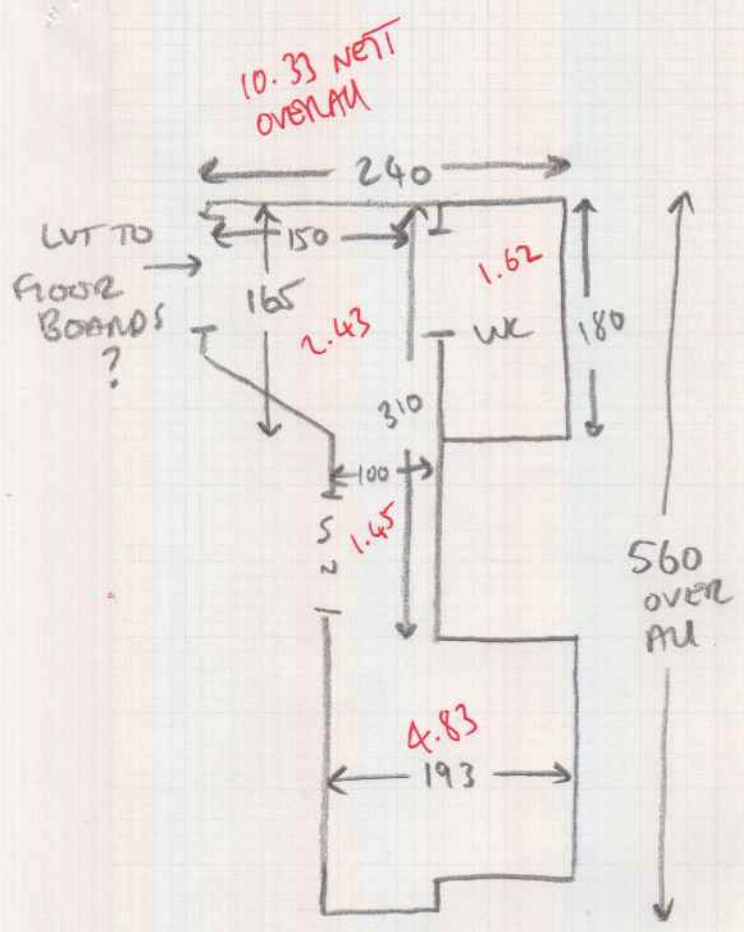
Job No:

Name:

Address:

Tel:

Sheet: 21



~~EPZ TO SLUR~~

PLYWOOD TO LAY

FLOW THROUGH INTO WC

CUSTOMER TO HAVE TOILET UNFURNISHED + SKIRTINGS OFF

IN W.C AT TIME OF FITTING

1x UNIT OF FURN TO MOVE