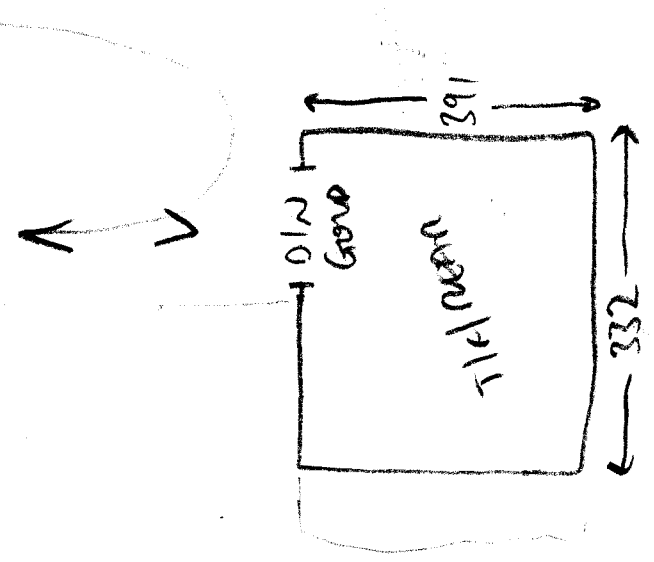
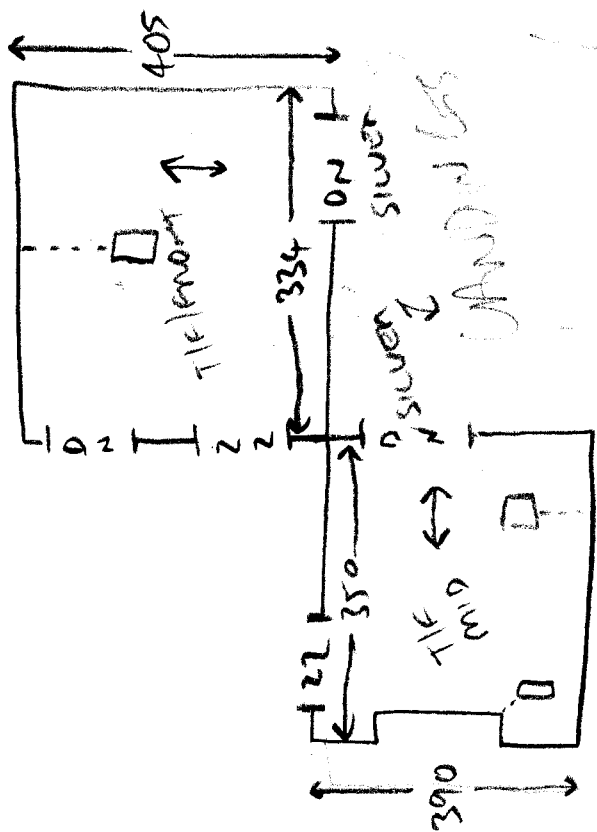
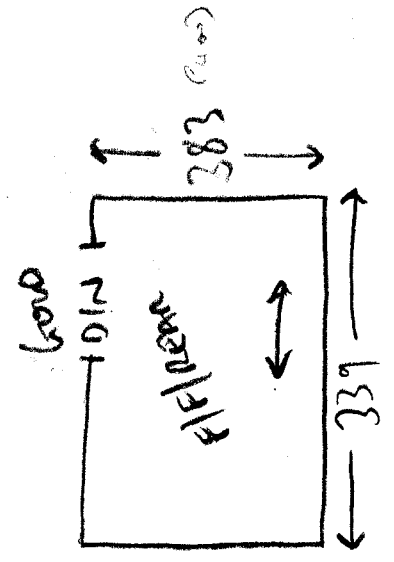
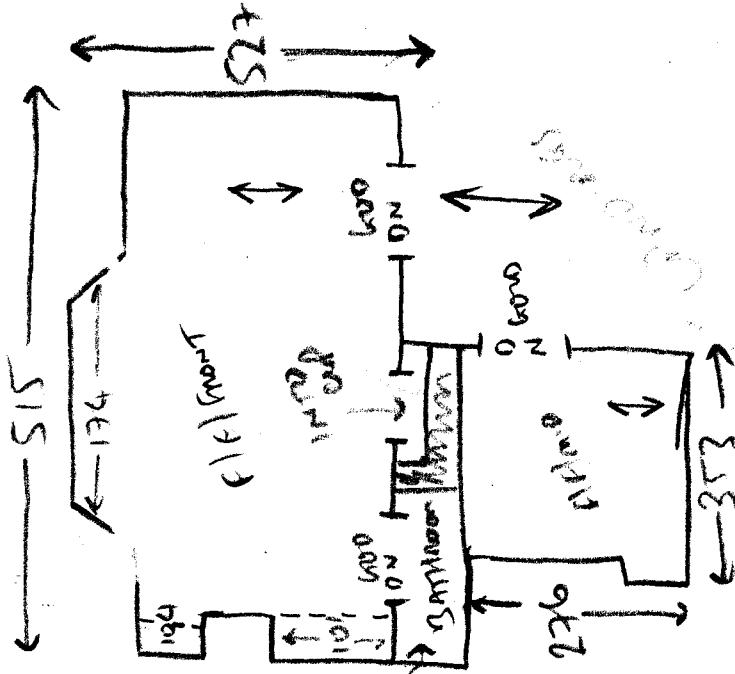


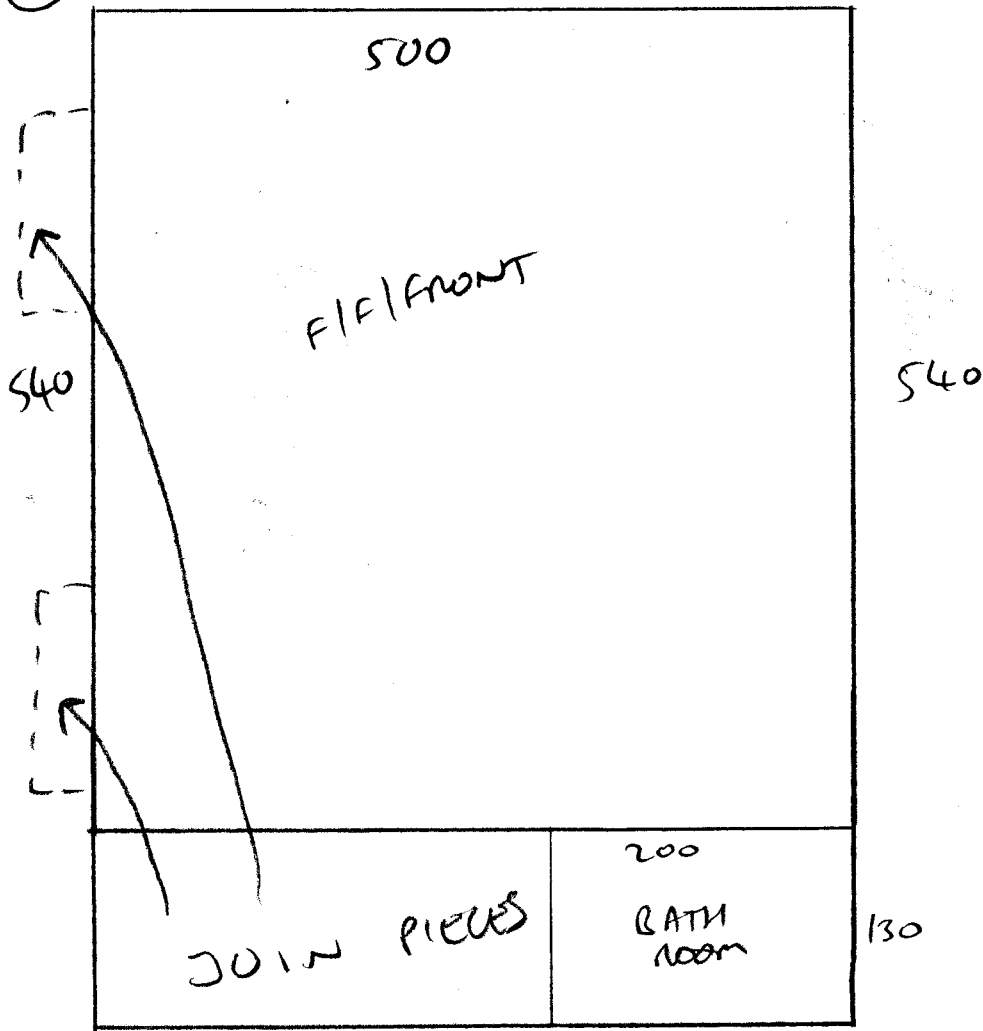
SEE BAR
DOOR BAR
LOCATIONS
LOCATIONS



SALVADROOM = 115 x 311



(A)



$$(A) = 6.70 \times 5.00 \text{ m}$$

$$F/F/MID = 2.85 \times 4.00 \text{ m}$$

$$F/F/REAR = 3.50 \times 4.00 \text{ m}$$

$$T/F/FRONT = 4.15 \times 4.00 \text{ m}$$

$$T/F/MID = 3.60 \times 4.00 \text{ m}$$

$$T/F/REAR = 3.45 \times 4.00 \text{ m}$$