

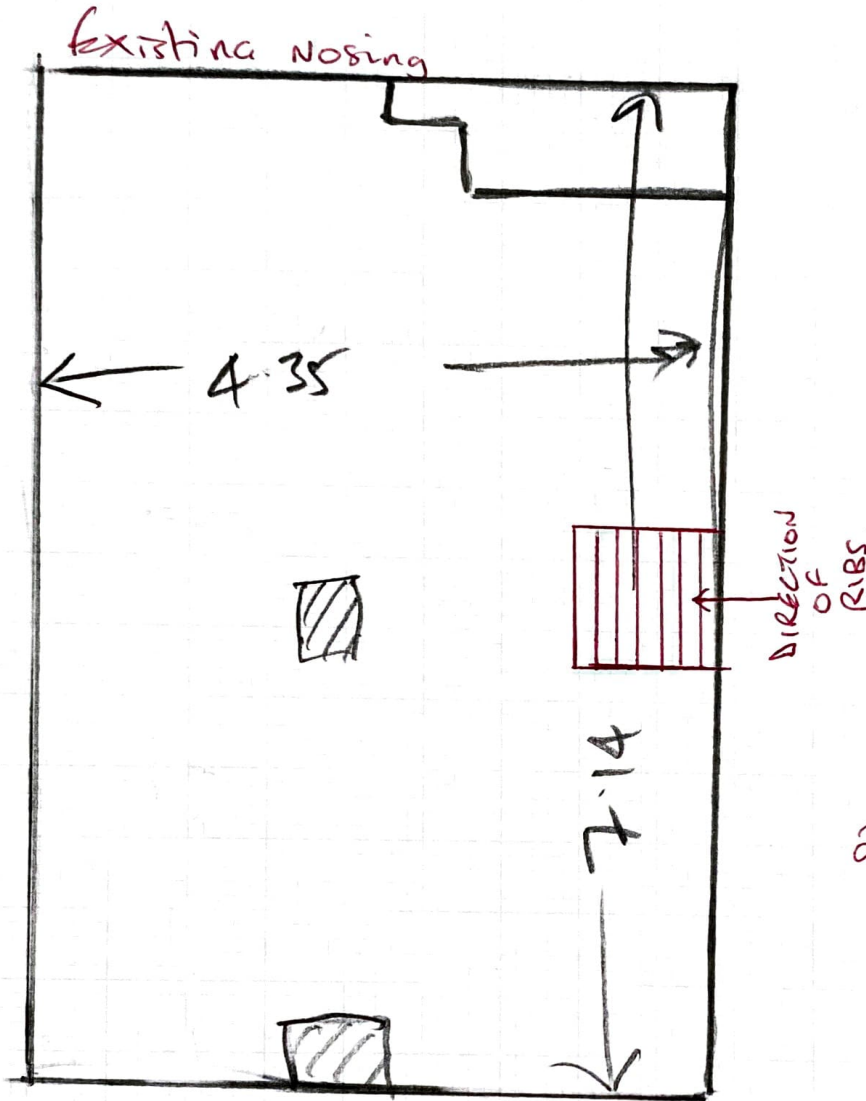
R18412  
 Halebourne  
 Halebourne House  
 Halebourne Lane  
 Chobham  
 Surrey  
 GU24 8SL

Brook  
 22927

Matwell  
 95 x 90

Entrance to Gate  
 2 NOT MAIN GATE

33m<sup>2</sup>



Notes

- ① Estimate to uplift Carpet + fit 18mm Ply to raise level + 12mm Ply in Mat well.
- ② Finish tiles flush with top of wooden nosing on step to lower office. Screenshot + ramp off from wood on step Solices finish level.

17 boxes @ 99m<sup>2</sup> = 32.83