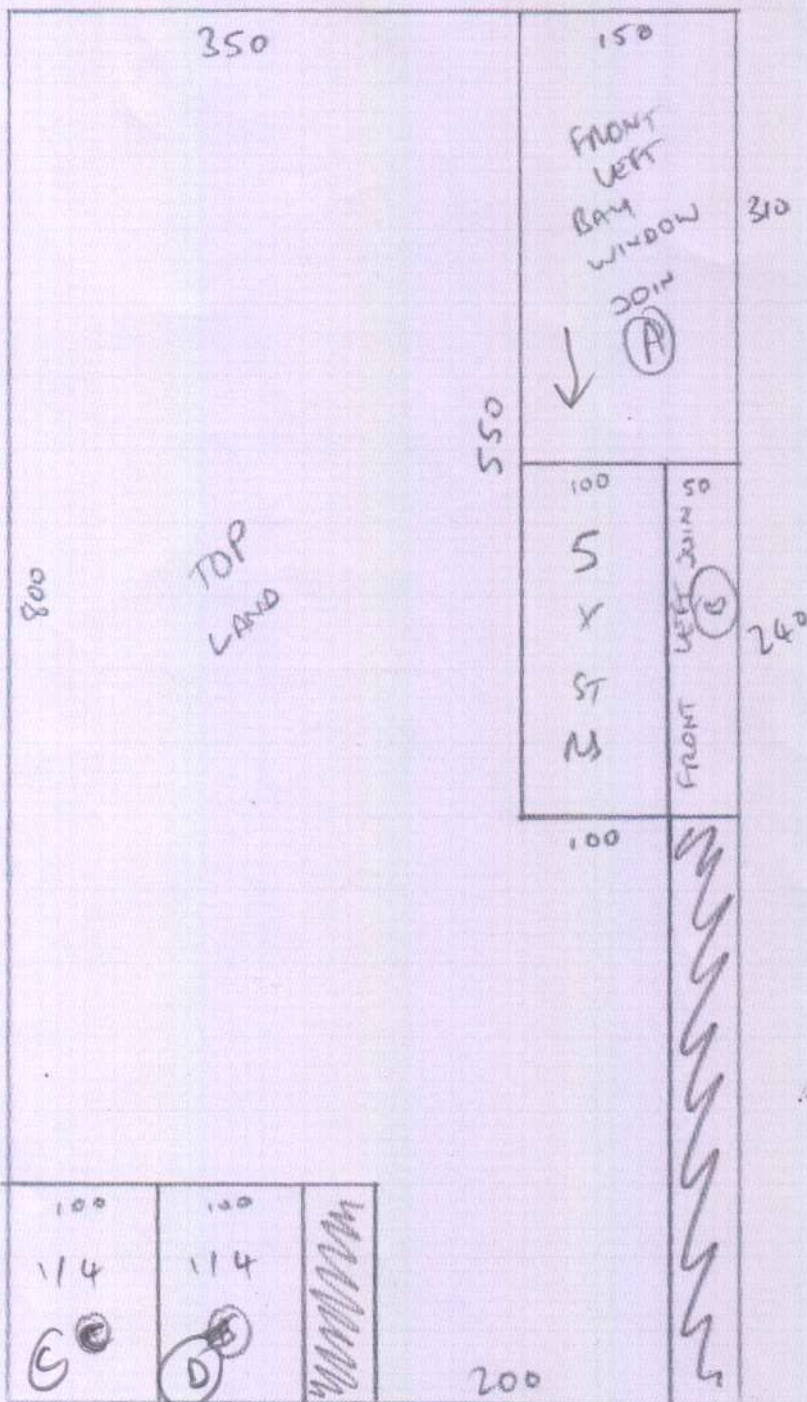


(A)

R18.657



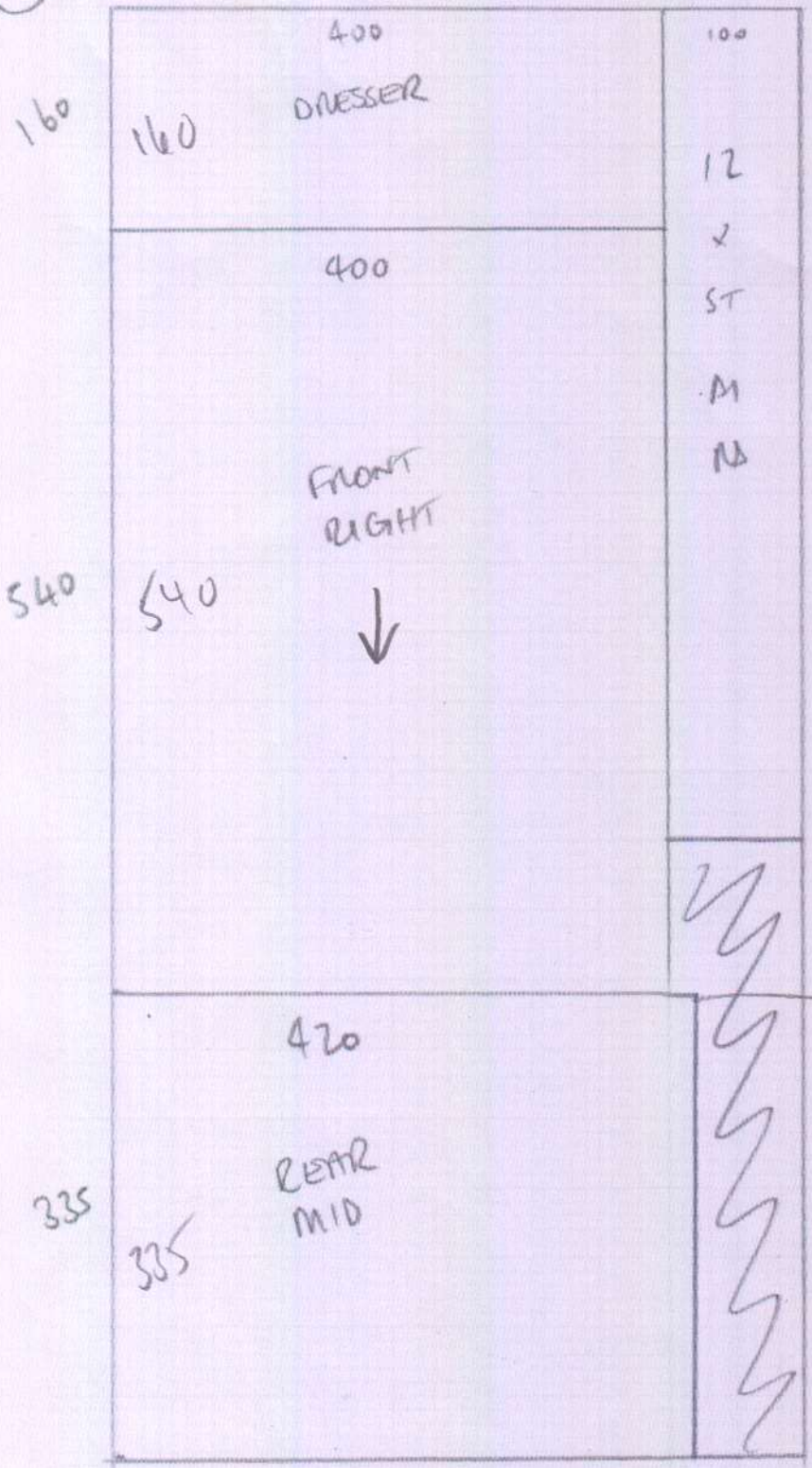
950
01AU

1 of 2

950 x 500

TARRANT 11
COL TAR-04

(B)



R18451

2 of 4

1035 x 500

(700 x 500)
335 x 500

WTS

R18651

$$\textcircled{A} = 9.5\text{m} \times 5\text{m}$$

3 of 4

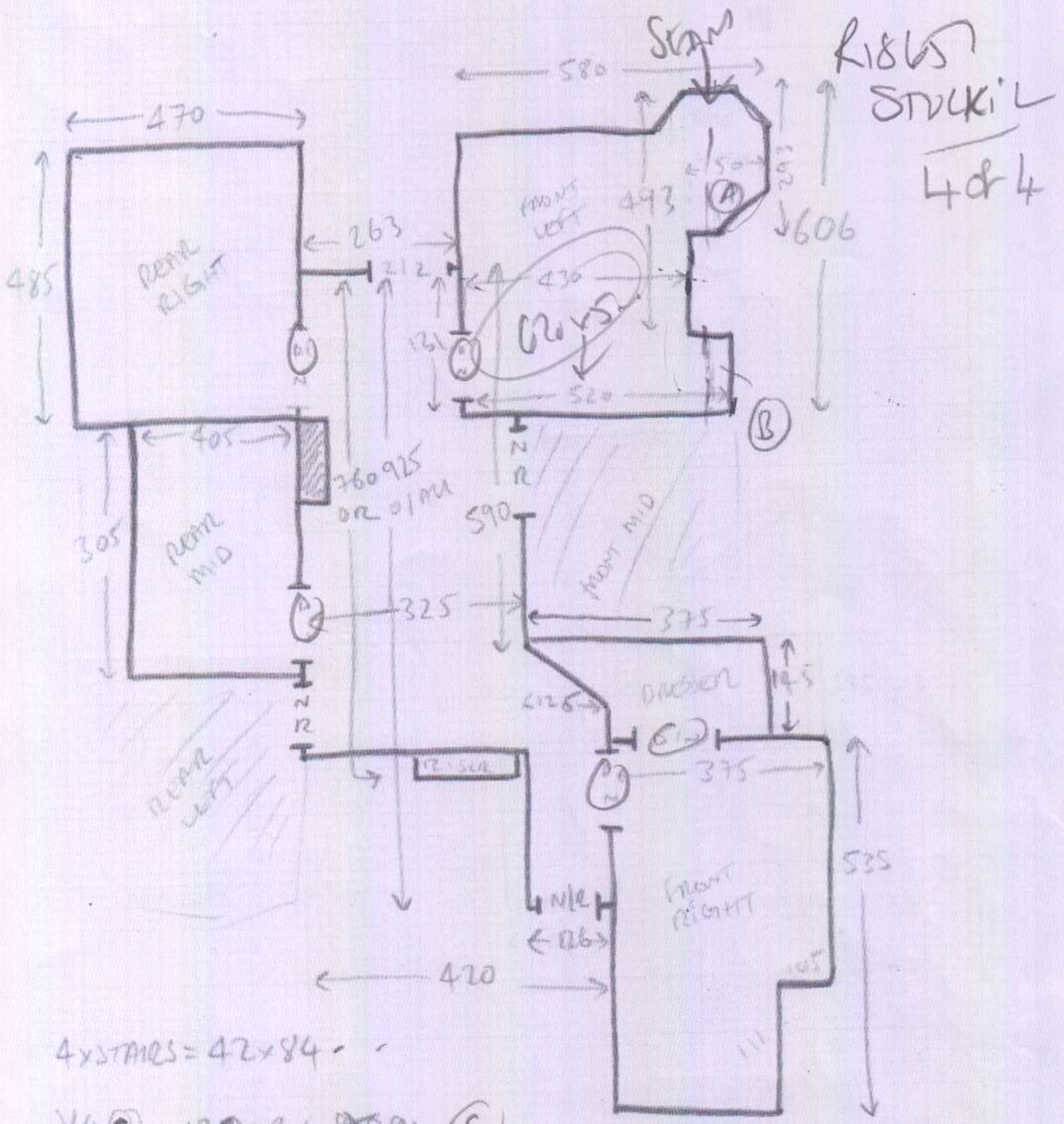
$$\textcircled{B} = 10.35 \times 5\text{m}$$

$$\begin{array}{l} \text{REAR} \\ \text{RIGHT} \end{array} = 4.80 \times 5\text{m}$$

$$\begin{array}{l} \text{FRONT} \\ \text{LEFT} \end{array} = 6.20 \times 5\text{m}$$

$$30.85\text{m} \times 5\text{m}$$

$$154.25\text{m}^2$$



- 4xSTAINES = 42x84 -
- 1/4 C = 12002x 9091 C
- 4xSTAIN = 43x84 -
- 1/4 D = 108 on x 93 D
- 8xSTAIN = 43x84 -