

Phase 1 - MARTIN 2/11
Phase 2 - MARTIN 8/12
R18845
Wilson

① of 7

Cotswolds
Col EKstone CoT000?

TOP BACK Bed 335 x 500
Cut Plan ① 1045 x 500
Cut Plan ② 11.20 x 500
Cut Plan ③ 700 x 500

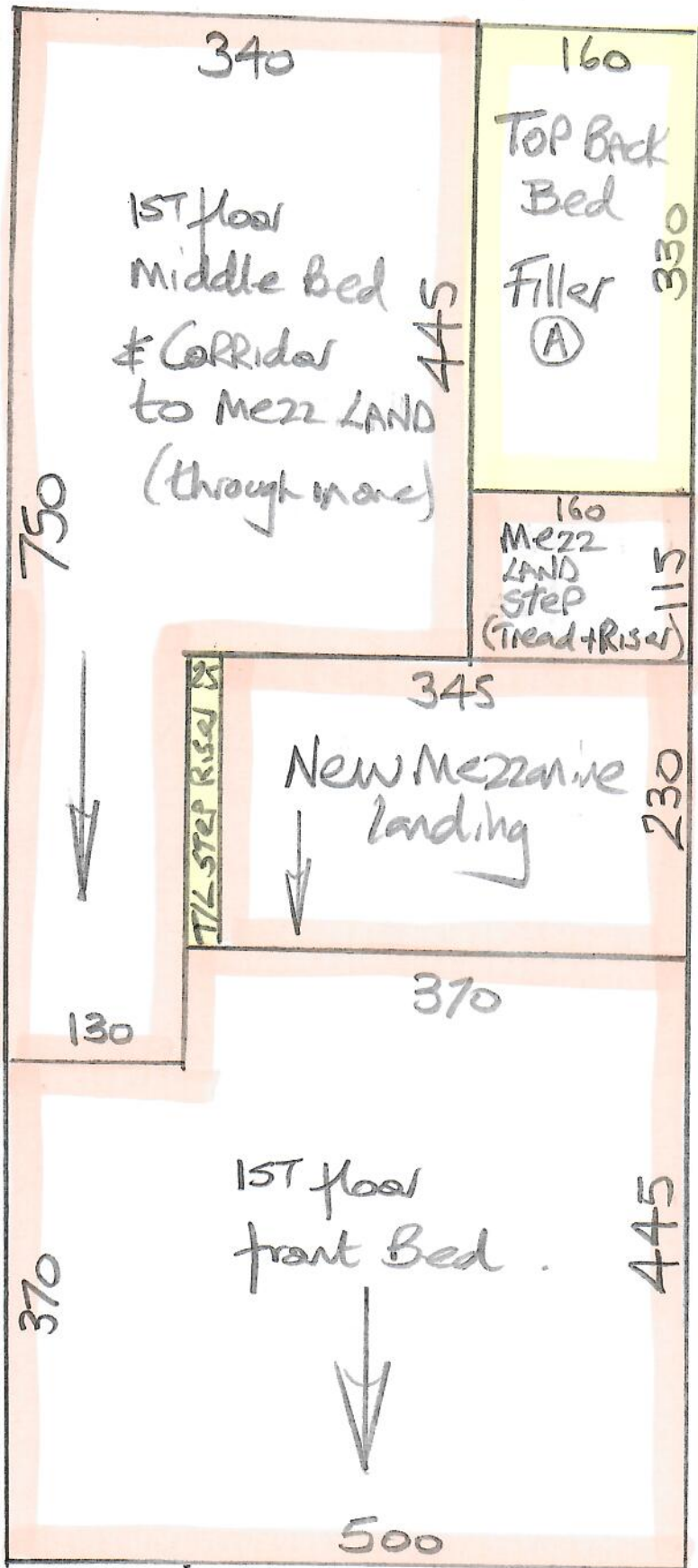
$$32.00 \times 500 = \underline{\underline{160m^2}}$$

$$U/Lay = 150m^2$$

MARK up & leave
with Customer
when Job is
completely finished

MARK up these pieces
& store w/WH until
Phase 2 on 8/12

②



Phase 1 - Martin - 2/11

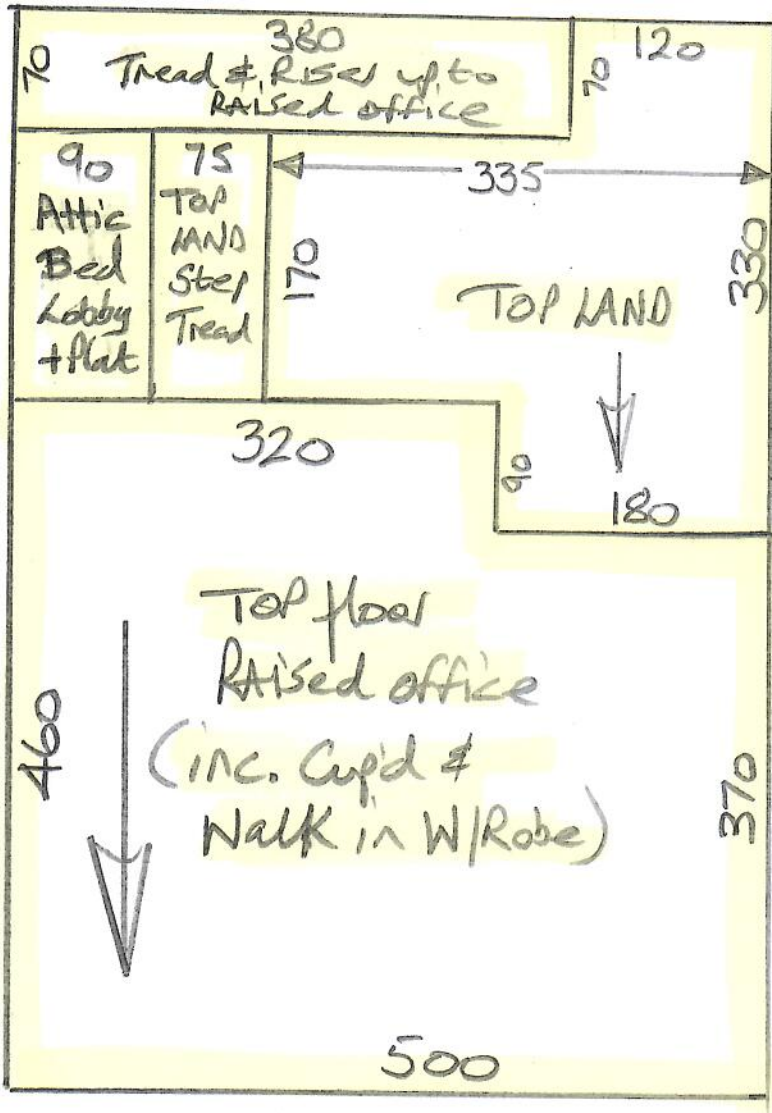
Phase 2 - Martin - 8/11

R18845
Wilson

2 of 7

MARK up these
Pieces & store
w/WH until
Phase 2 on 8/12

3



Phase 1 - Martin - 2/11

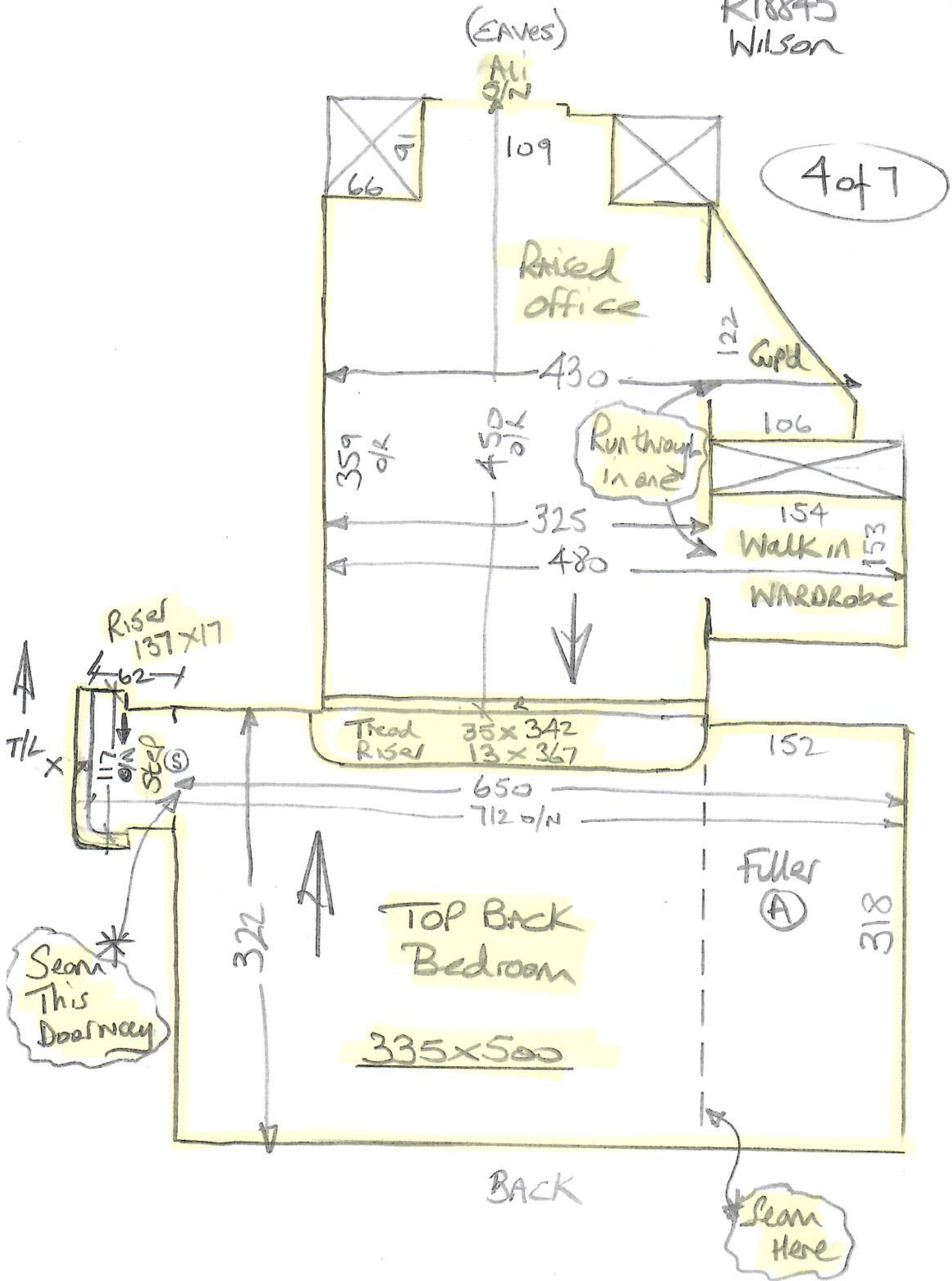
R18845
Wilson

3 of 7

Total floor (Newer Areas)

Phase 1 - 2/11

R18845
Wilson

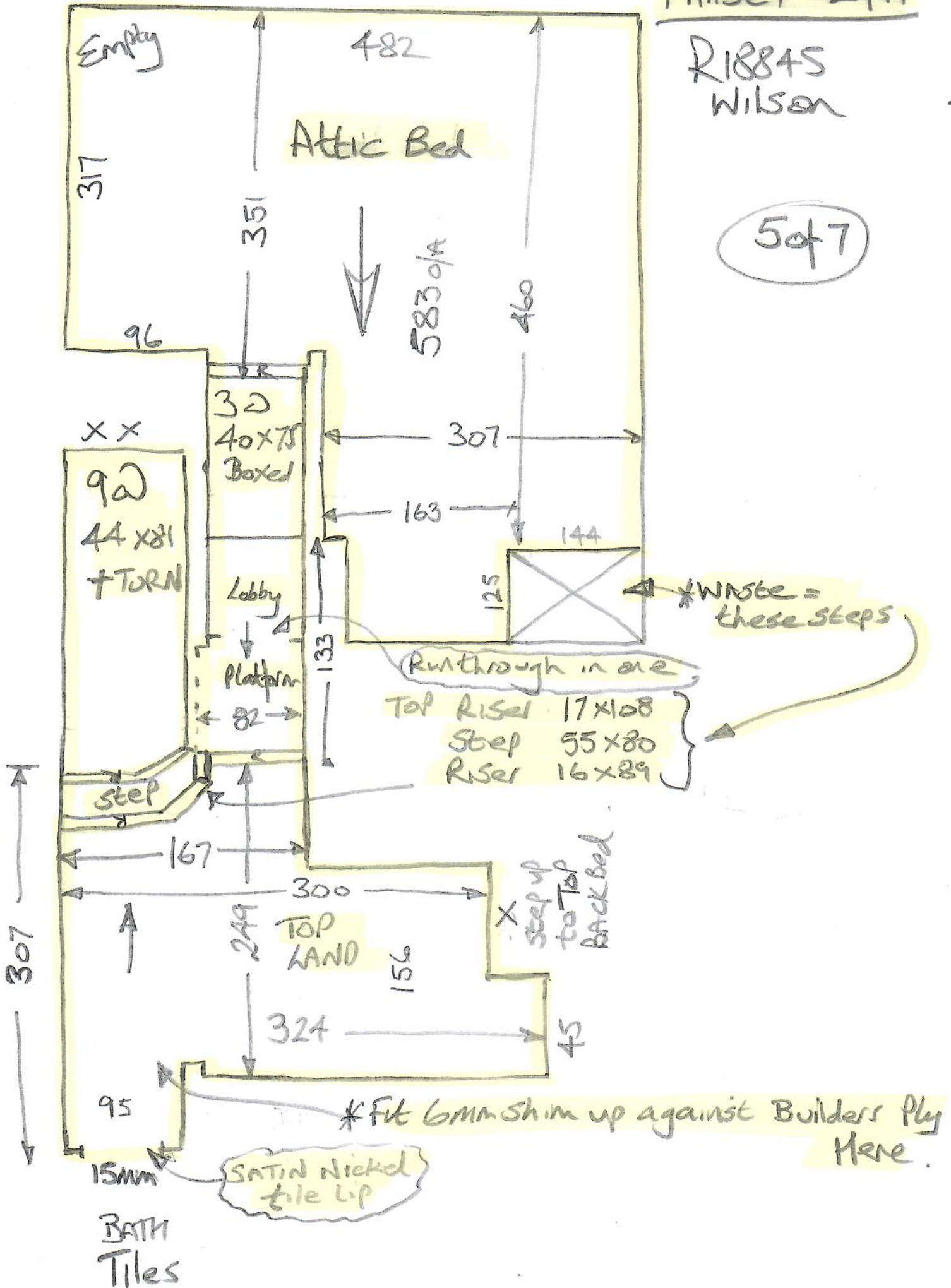


Top Floor

Phase 1 - 2/11

R18845
Wilson

5 of 7

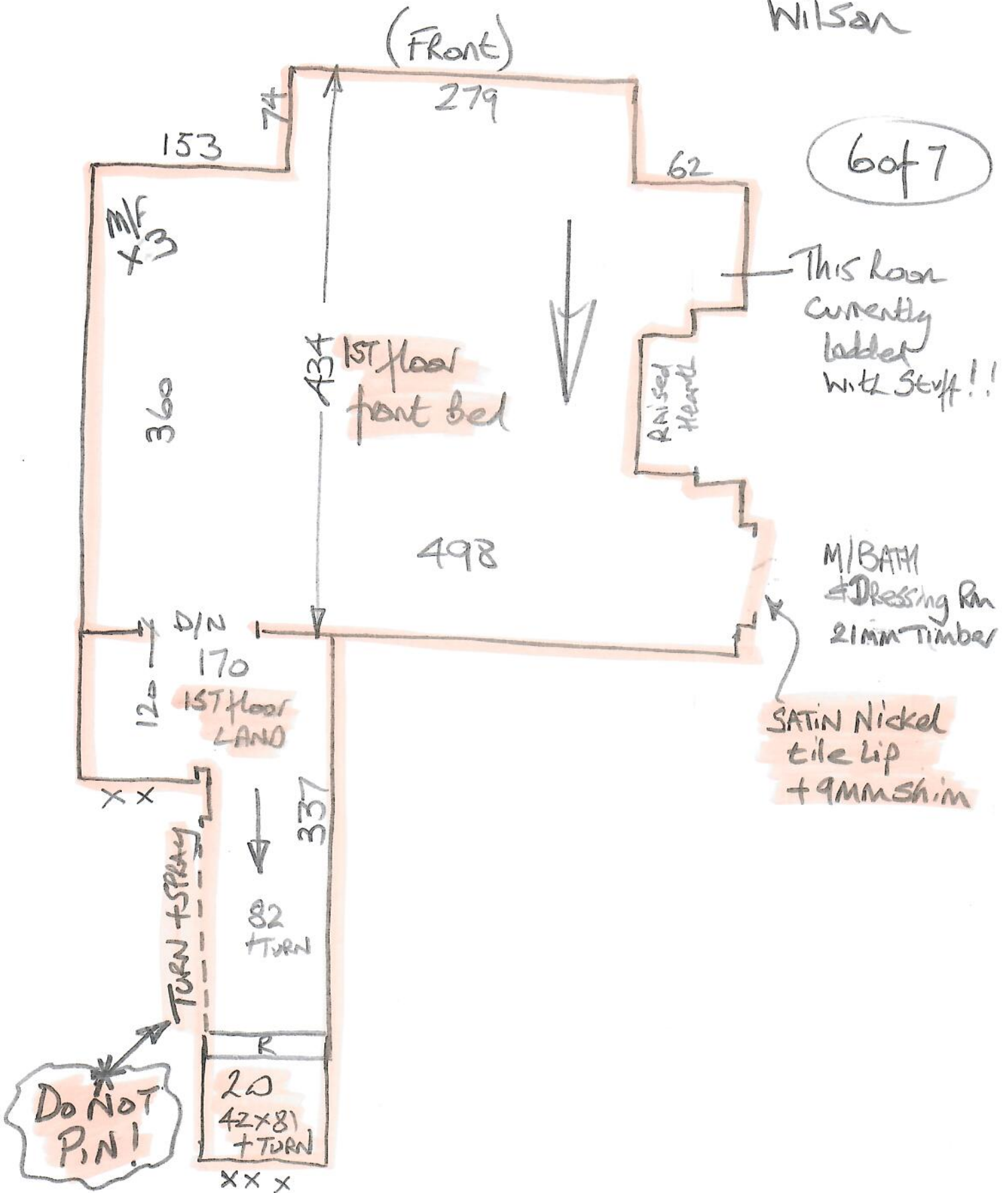


1st floor

Phase 2 - 8/12

R18845
Wilson

6 of 7



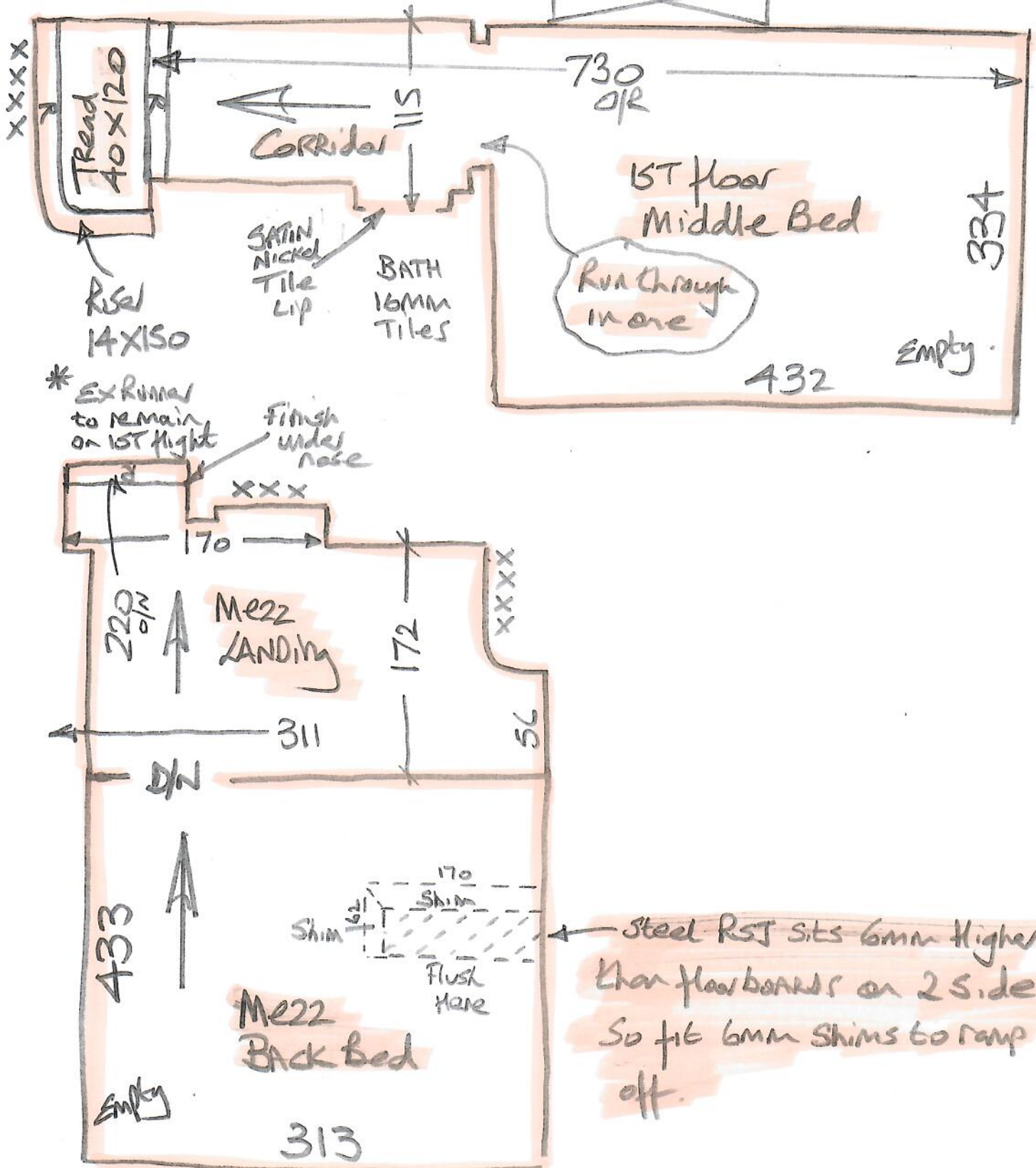
Rear Mezzanine Areas

Phase 2 - 8/12

R18845
Wilson

7 of 7

W/Robe to be
Built in
Here



Steel RST sits 6mm higher than floorboards on 2 sides so fit 6mm shims to ramp off.