

\* Phase 1 = 4 rooms

Phase 2 = 5/L (Latre/Date)

R18980

Clemente/Leggate

1 of 4

SouthWold (Kutina)  
Col. Cavenham Chrome  
(KuT-TE204)

Cut Plan ① 590 x 500

Cut Plan ② 715 x 500

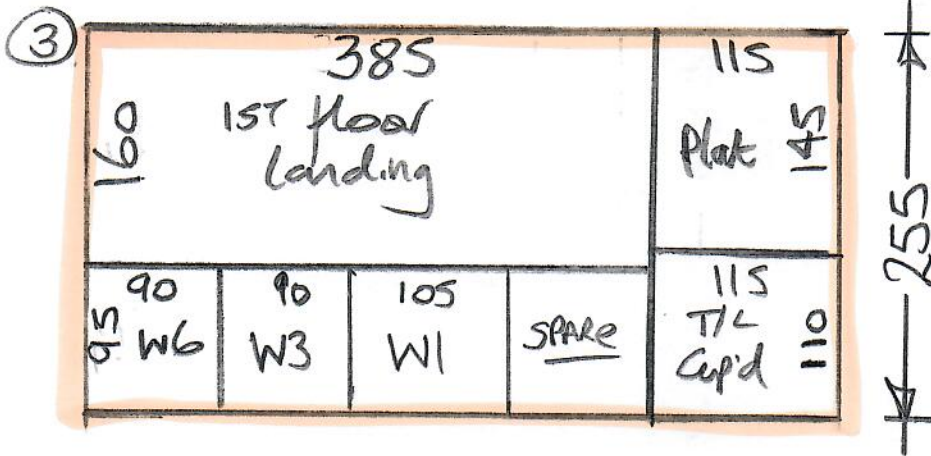
Cut Plan ③ 255 x 500

1560 x 500

= 78.00m<sup>2</sup>

$V/4Ag = 70M^2$

Make up rest of  
Cut Plan & store  
DWH until  
Phase 2



R18980  
Clemente/Leggate

Lot 4

Southwold (Kutina)  
Cavenham Chrome (K.T. 9220)

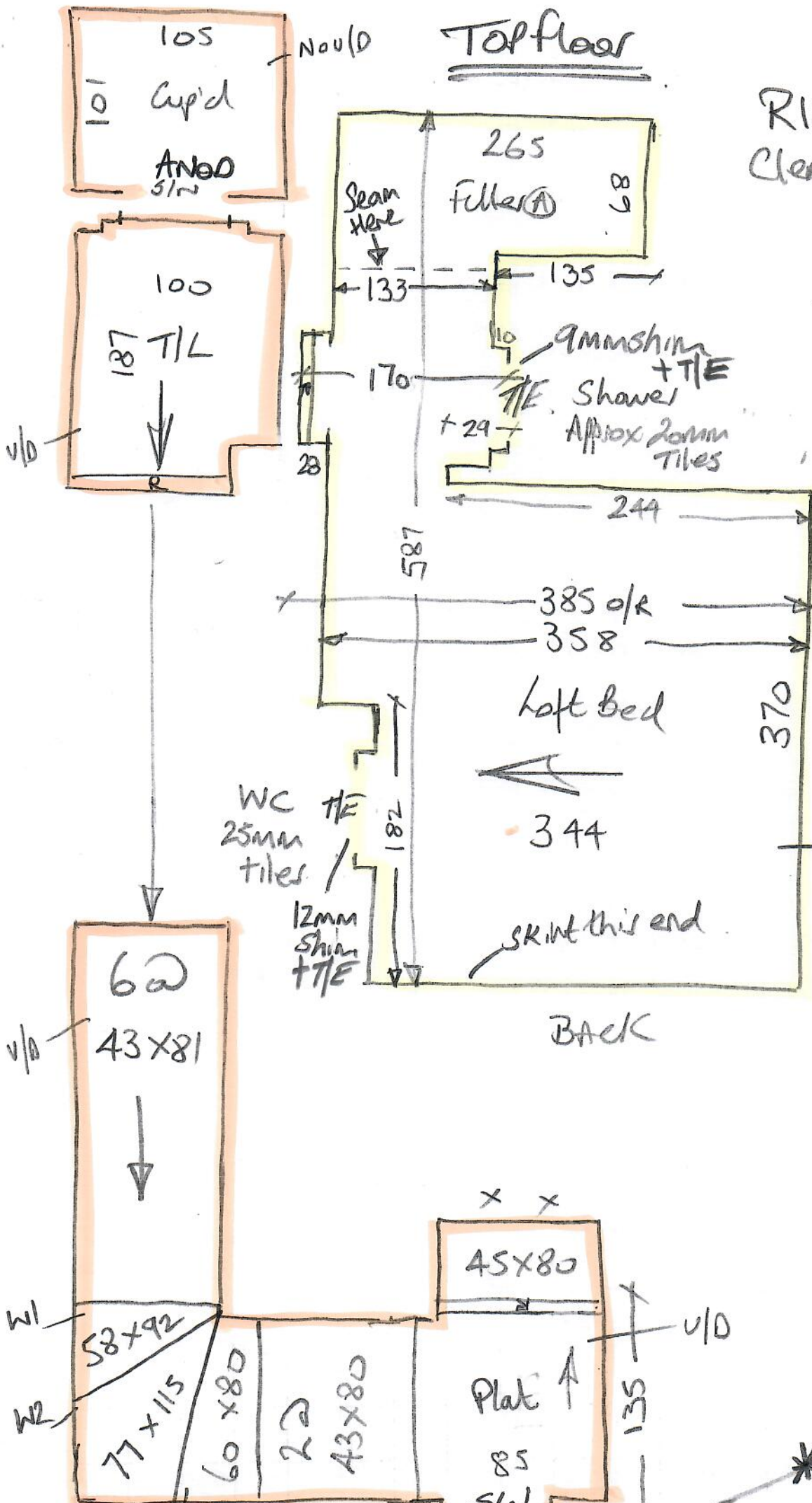
Please Note

Fit ANOD S/NAP at top landing Cupboard  
door & Satin BRASS S/NAP at Main  
bathroom door on 1st floor.

# Top floor

R18980  
Clemente / Leggate

3 of 4



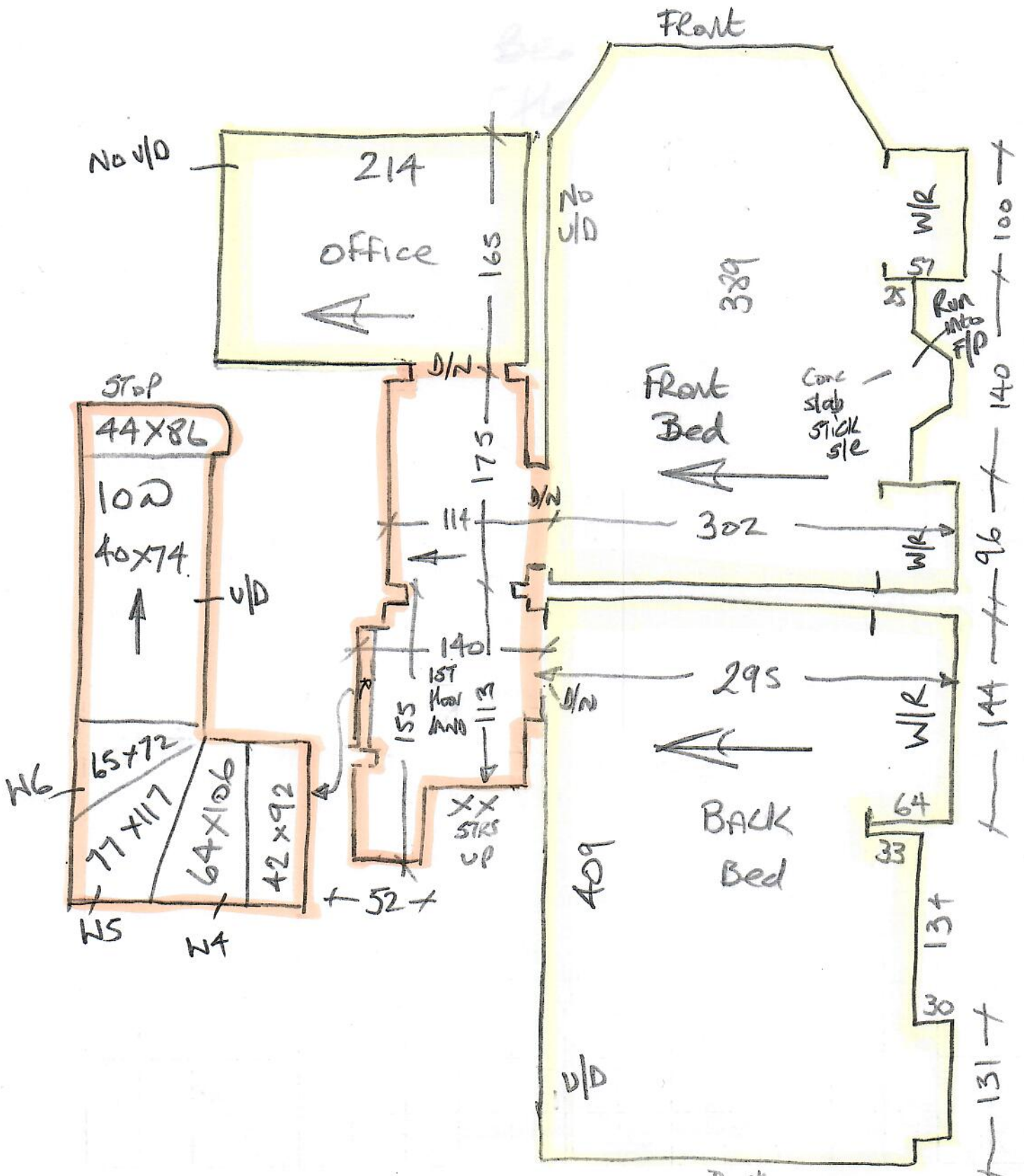
\* MAIN BATH  
5mm Tile

\* Run Carpet into W/Robes  
 in front & Back Beds on  
 the 1st floor

R18980  
 Clemente/leggate

1st floor

4 of 4





# Technical

R18980  
Clemente  
& Leggate

36

## **Product**

- Base material high grade aluminium with a solid brass cap.
- Z Bar option will accommodate up to 12mm expansion.

## **Installation**

- For use with stretch fit carpets and direct stick/ double stick installations.
- The Double Z 9 is designed to nap down, clamping the carpet onto the anchoring pins.
- Use the MDF Spacer cut into short lengths to raise base when used in conjunction with an underlay system.
- To create a Z bar score along the peel line with a utility knife and peel away with a pair of pliers.
- **Watch our installation video at [www.stairrods.co.uk](http://www.stairrods.co.uk) for more information.**



ANY QUESTIONS  
Please call 01207 591176 For friendly expert advice.

## **See some installation examples below**

Underlay raising base with 3mm MDF



As a Z Bar with 3mm MDF, Pre 'nap'



**Cleaning Guide, See page 105**