



* PHASE 1 - 15/9

R19219
Sultanov

1 of 4

Ultimate Expression
Col. Frost

- Cut Plan ① 850 x 400
- Cut Plan ② 425 x 400
- Cut Plan ③ 620 x 400
- Cut Plan ④ 545 x 400

$$2440 \times 400 = \underline{\underline{97.60 \text{ m}^2}}$$

$$U/Day = 85 \text{ m}^2$$

MARK UP REMAINING
CARPETS + STORE
D W/H UNTIL
PHASE 2 on 22/9

Phase 1-15/9

R19219
Sultanov

2 of 4



MARK UP remaining
Carpet & store
@ WH until
PHASE 2 on 22/9

*Cut Runner for Hall
& send to KK for
whipping all round

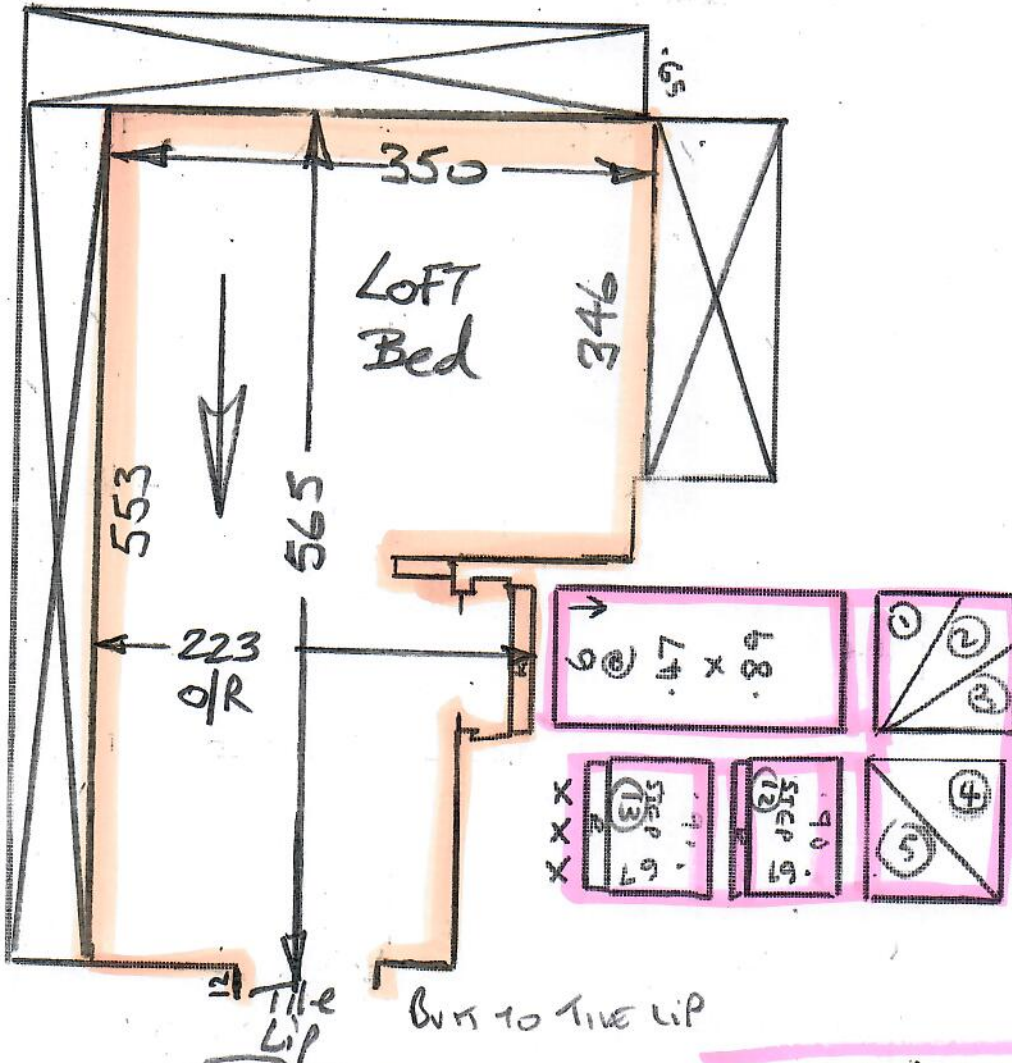
ATTIC ROOM

Phase 1 - 15/9

Phase 2 - 22/9

R19219
SULTANOV

3 of 4



ENsuite
No tiles fitted
yet

New timber floors
Empty / No v/d
Needs new s/e

Upper STAIRS

STRS	6 @ 47 x 89
W1	67 x 103
W2	77 x 125
W3	76 x 88
W4	84 x 124
W5	113 x 88
Step	64 x 89
step	60 x 89

Phase 1 - 15/9

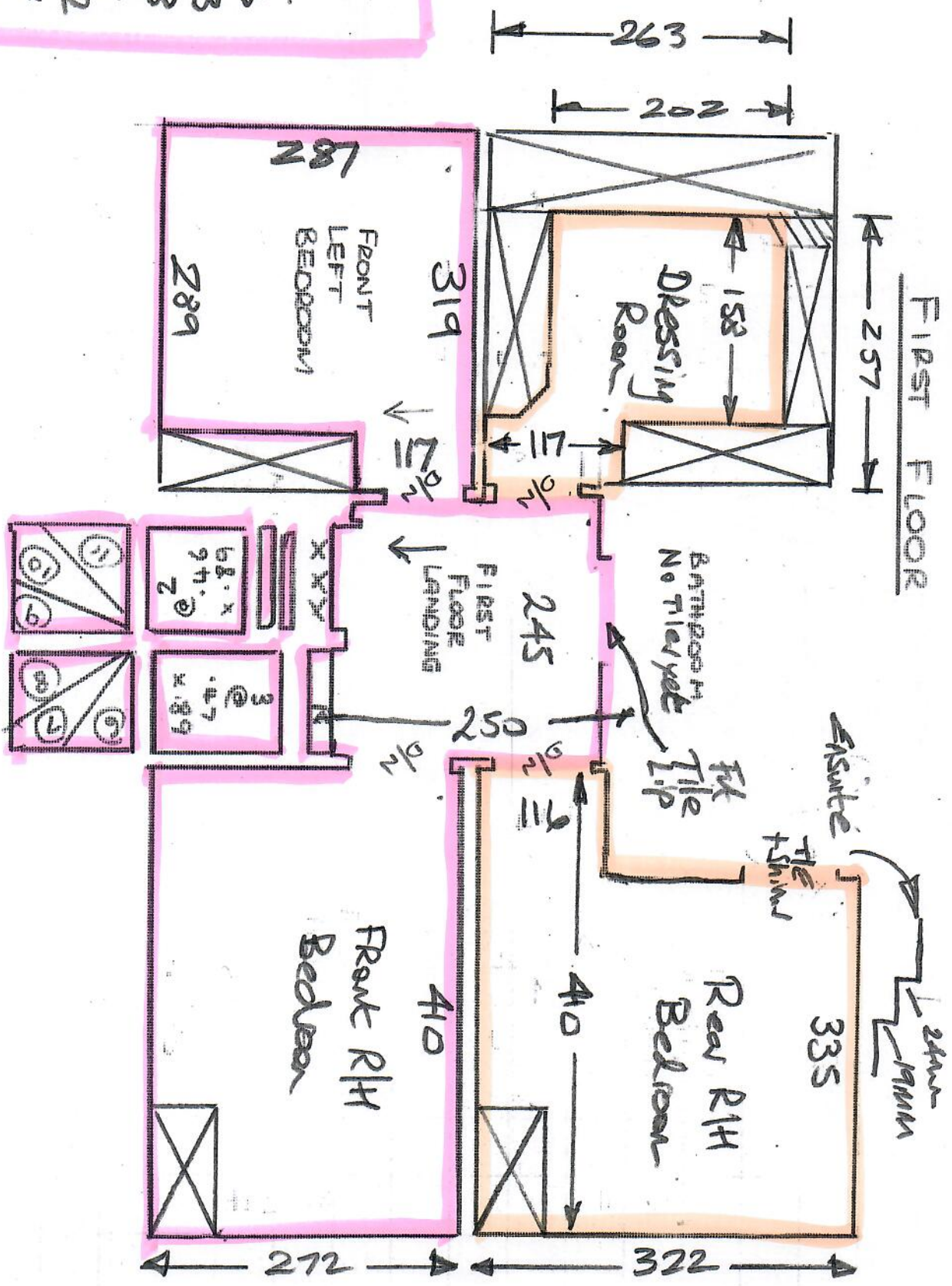
Phase 2 - 22/9

R/92/9
SULTANOV

40/4

Lower STAIRS

STR5	3	247x89
W6		69x103
W7		75x133
W8		80x98
W9		74x114
W10		82x132
W11		78x87
W12		30x96
W13		19x108



* Whipped mure for Hall = 360x80cm