

4m Wide

R19404
Inicio Bespoke

1 of 15

Lulworth
Col. LW-37
Ammaite

Flat 2 - Bed 2 315 x 400

Cut Plan ① 10.20 x 400

Cut Plan ② 940 x 400

Cut Plan ③ 525 x 400

Cut Plan ④ 525 x 400

Cut Plan ⑤ 525 x 400

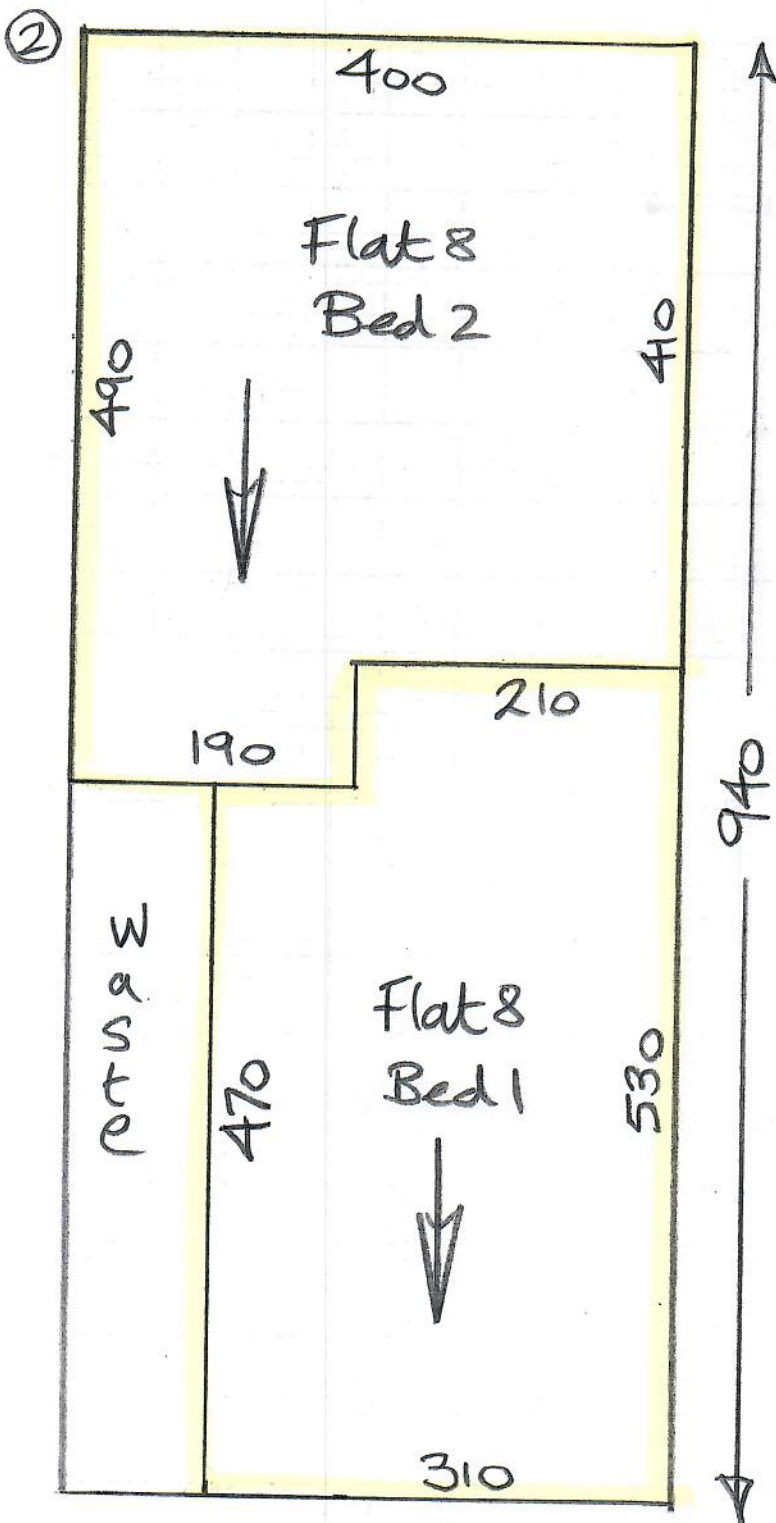
Cut Plan ⑥ 525 x 400

$$43.75 \times 400 = \underline{\underline{175M^2}}$$

Phase 1 - 26/2 - 28/2

Fit flats in this order, flat 3 (Show flat) then flats 4, 5 + 6 on 1st floor, followed by flats 7 + 8 on the top floor.

(Flats 1 + 2 to be done on phase 2)

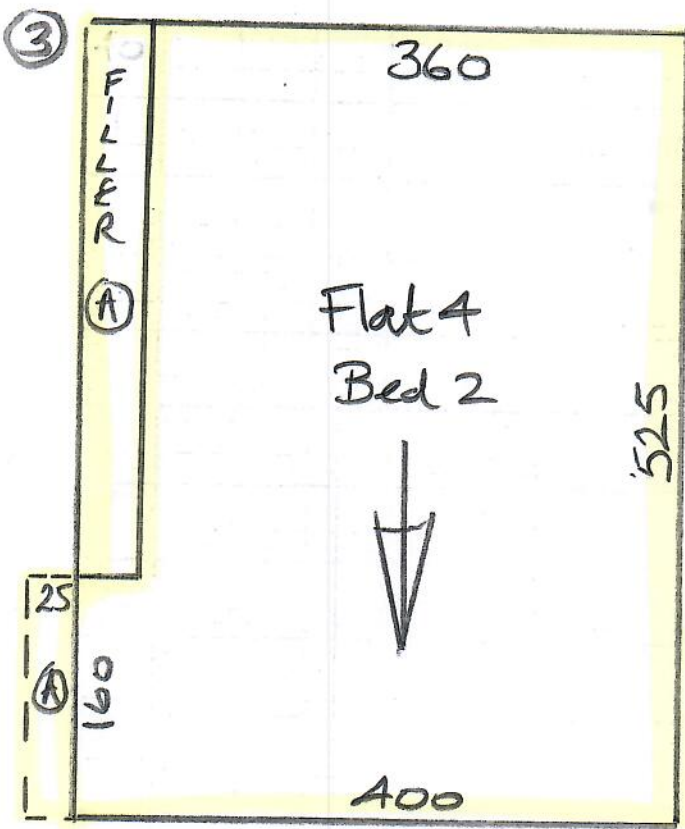


4m Wide

R19404
Inicio Bespoke

2 of 15

Lulworth
Col. LW-37 (Ammonite)

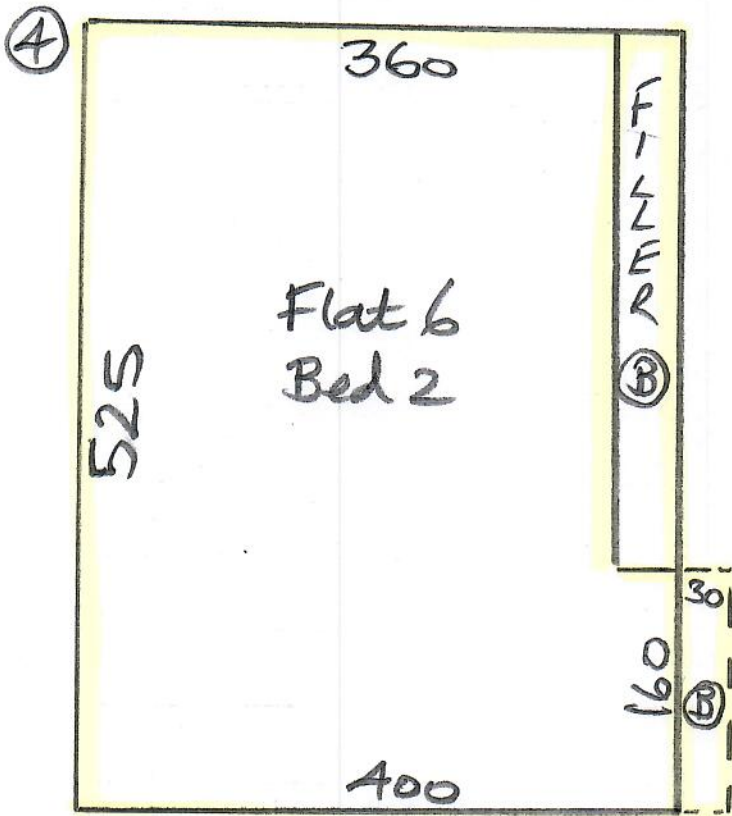


4m Wide

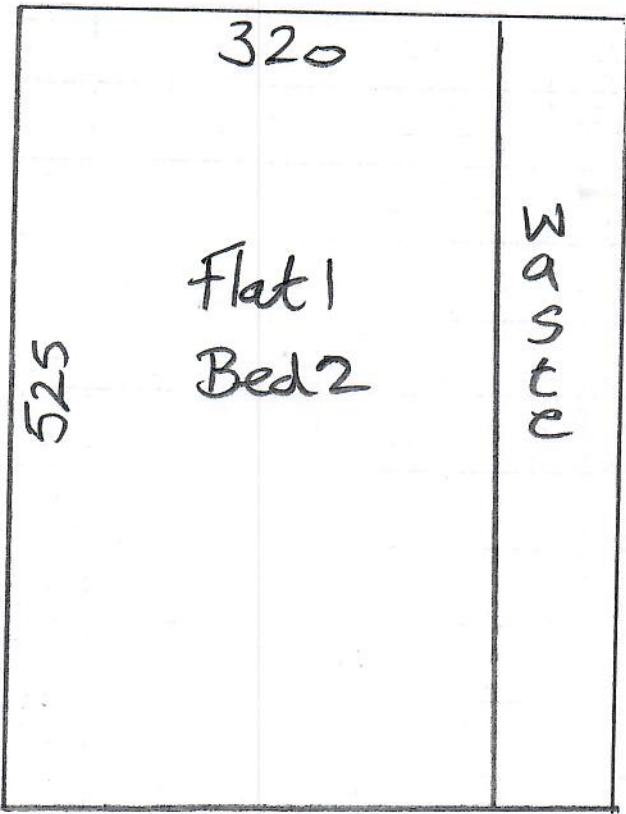
R19404
Inicio Bespoke

3 of 15

Lulworth
Col. LW-37 (Ammonite)



⑤



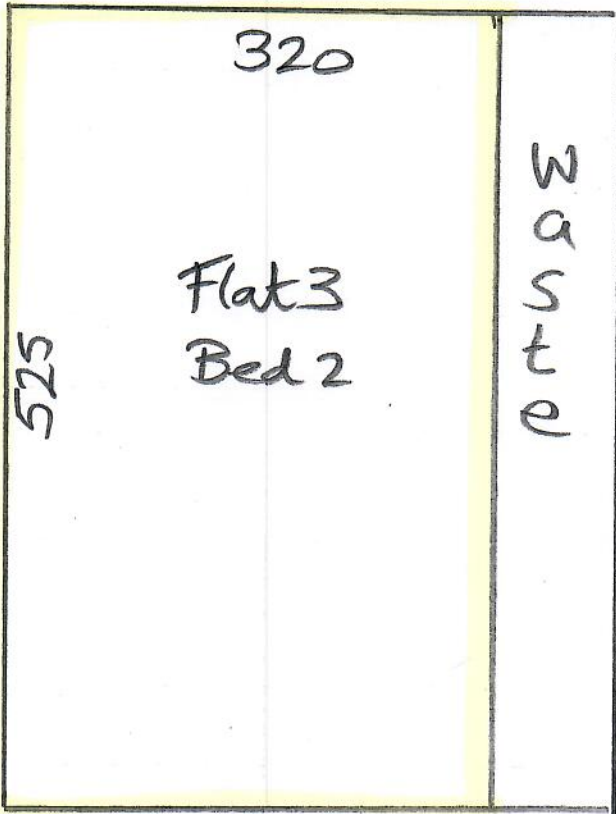
TM Wide

R19404
Inicio Bospok

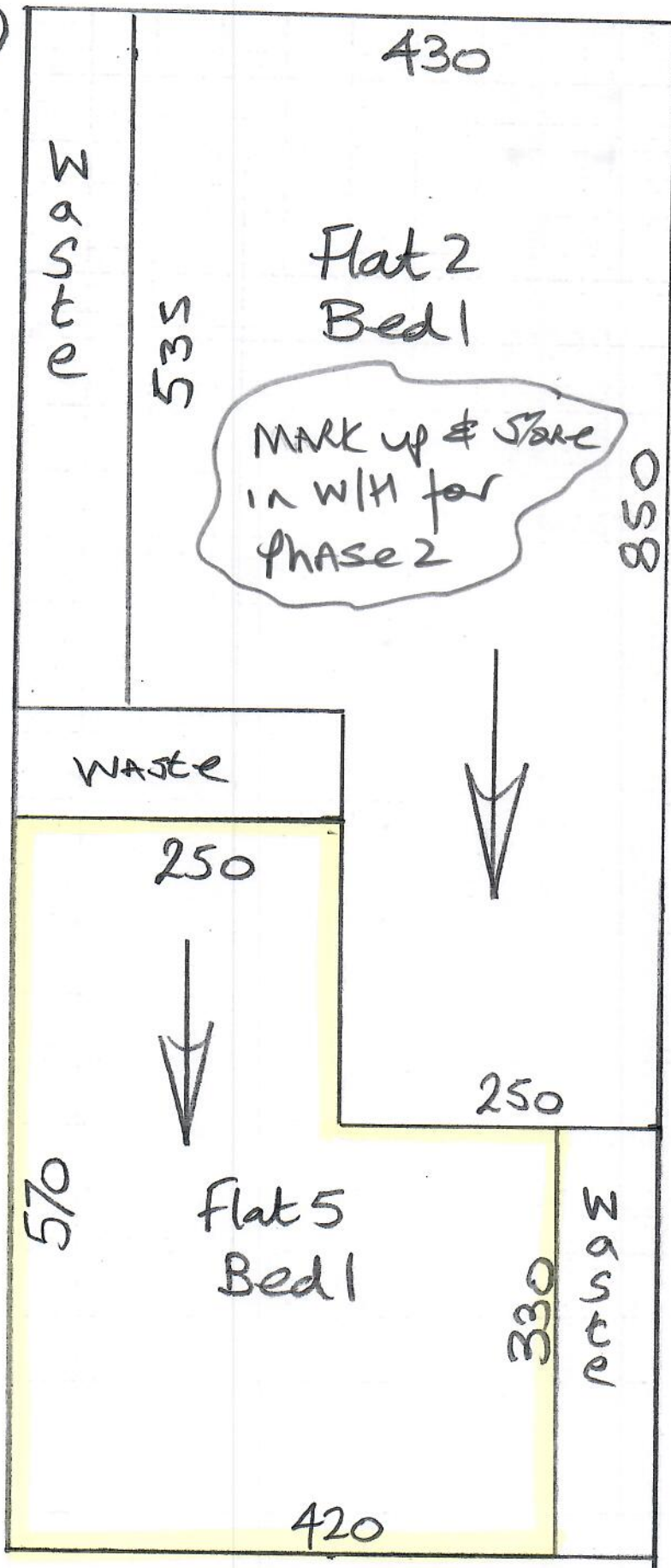
4 of 15

LulwantL
Col. LW-37 (Ammanite)

⑥



⑦



5m wide

R19404
Inicio BESPOKI

5 of 15

Lulworth
Col LW-37 (Ammonite)

Cut Plan ⑦ 1180 x 50

Cut Plan ⑧ 955 x 50

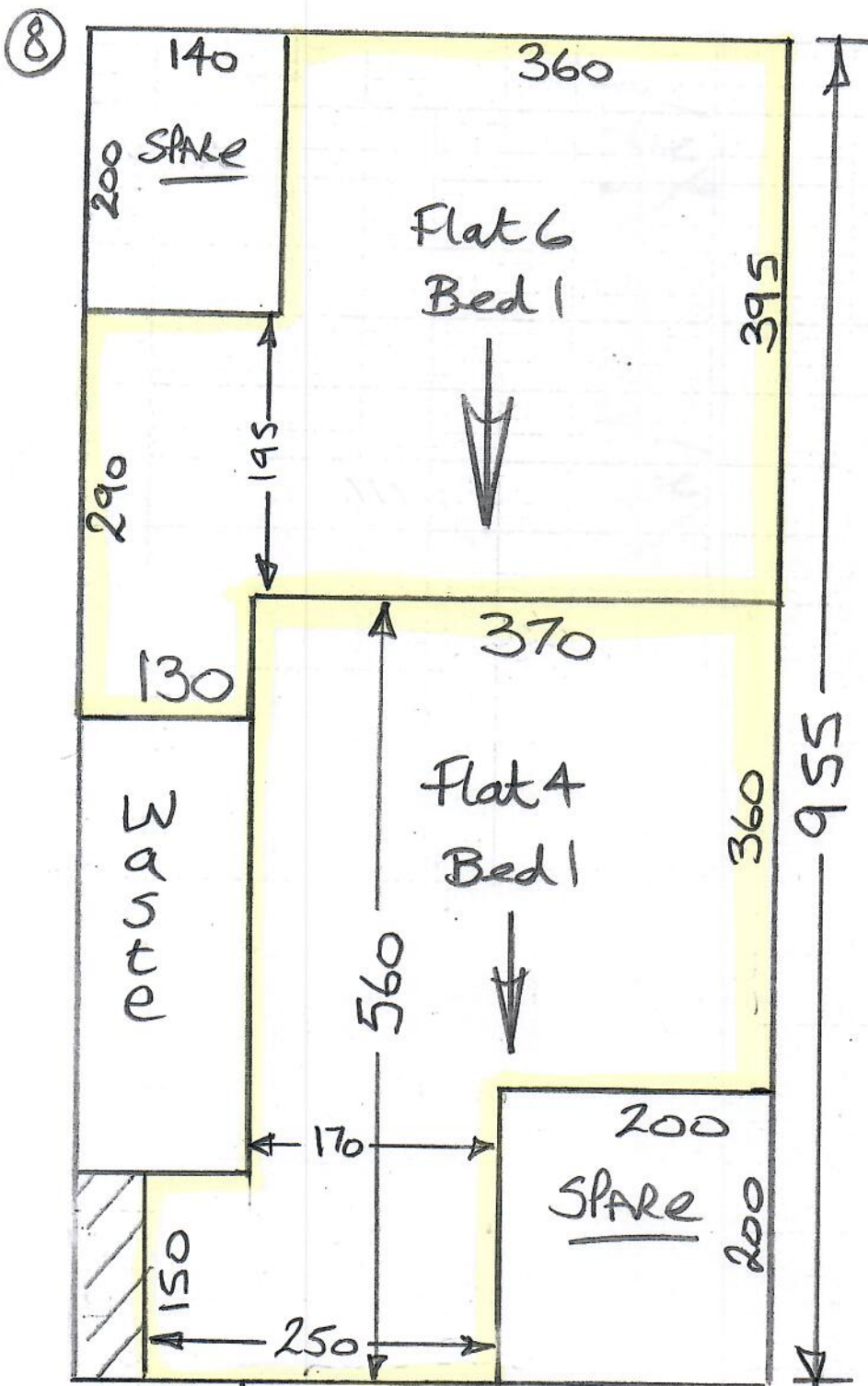
Cut Plan ⑨ 280 x 50

Cut Plan ⑩ 565 x 50

Cut Plan ⑪ 525 x 50

3505 x 50

= 175.25m

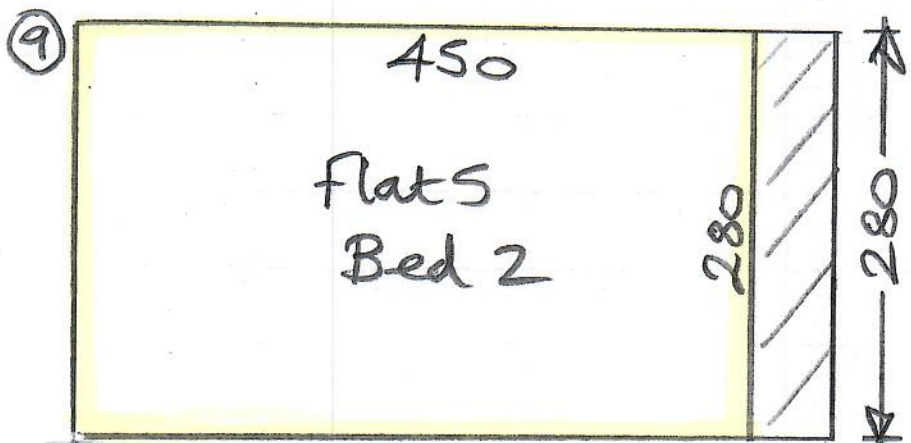


5m wide

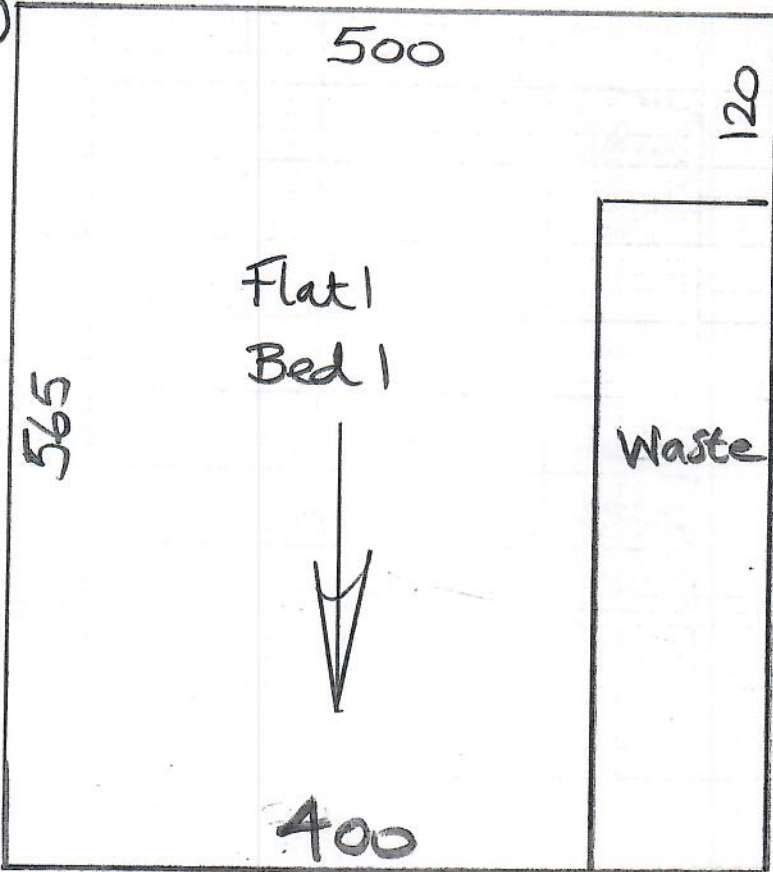
R19404
Inicio Bespoke

6 of 15

Lulworth
Col. LW37



⑩



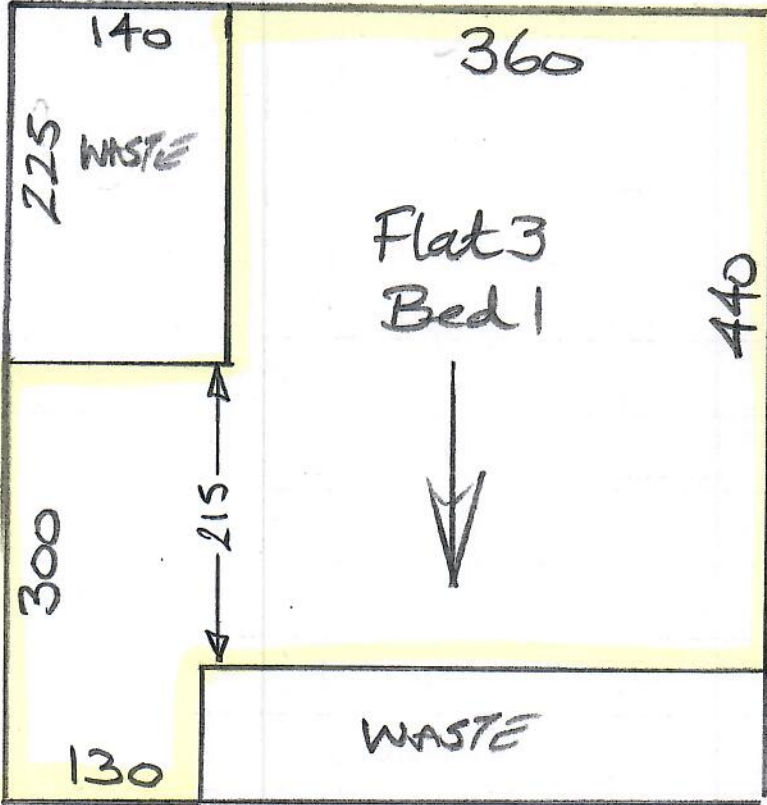
5m wide

R19404
Inicio Bespoke

7 of 15

Lulworth
G1 LW-37 (AMMONITE)

⑪



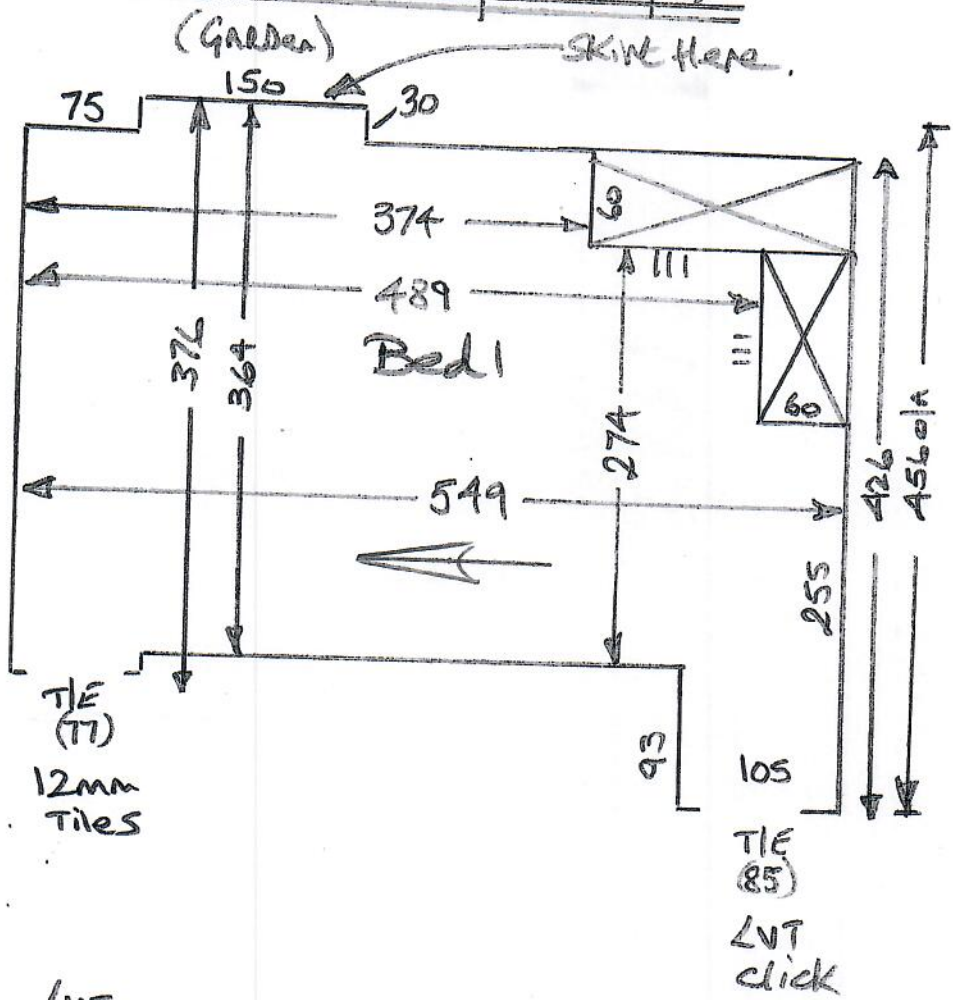
525

Flat 1 (Ground floor left)

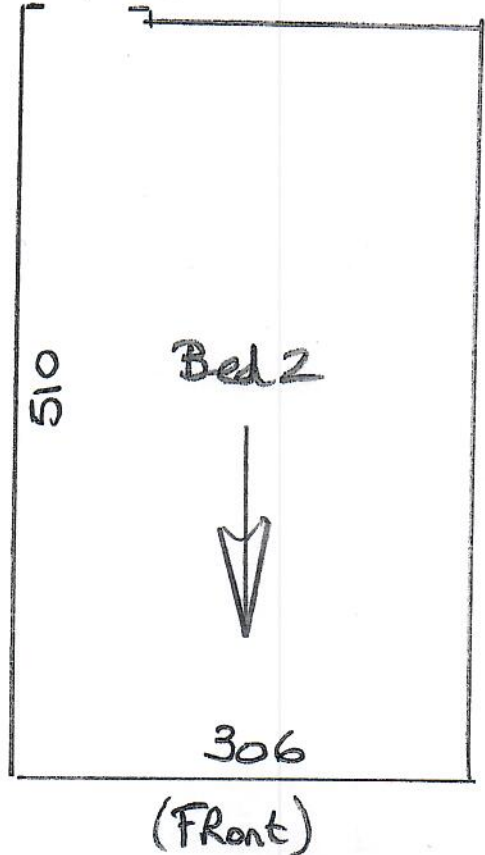
Phase 2

R19404
Inizio Bespoke

8 of 15



LVT
click
T/E (85)



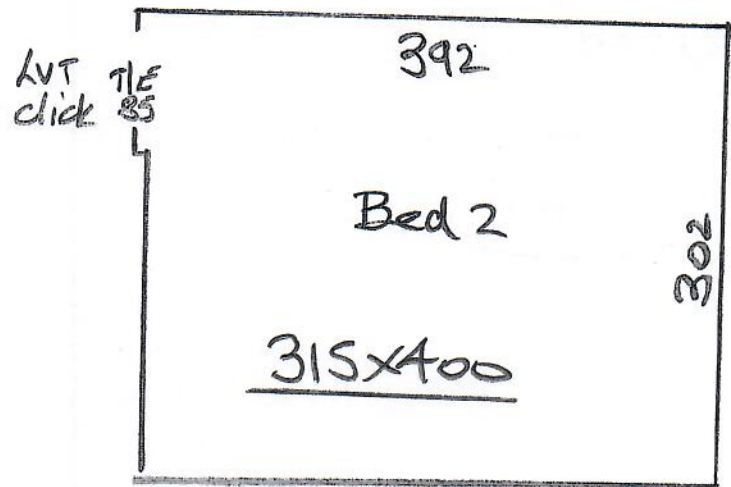
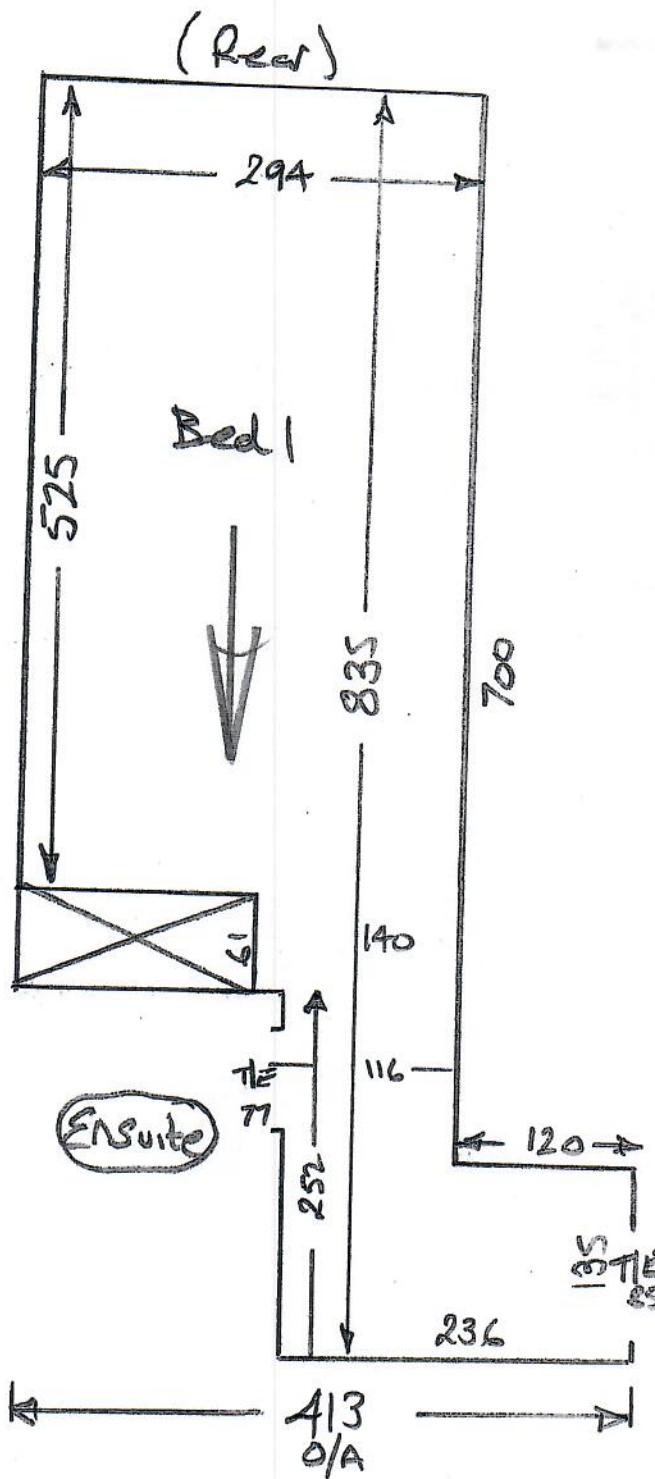
U/Lay = 38M²
 sle = 25 sticks
 T/E = 1 x 2.70m length
 Seaming =

Flat 2 (Ground floor Middle)

Phase 2

R19404
Inicio Bespoke

9 of 15



$V/244 = 36m^2$
 s/e = 26 sticks
 T/E = 1 x 2.70m
 Seaming =

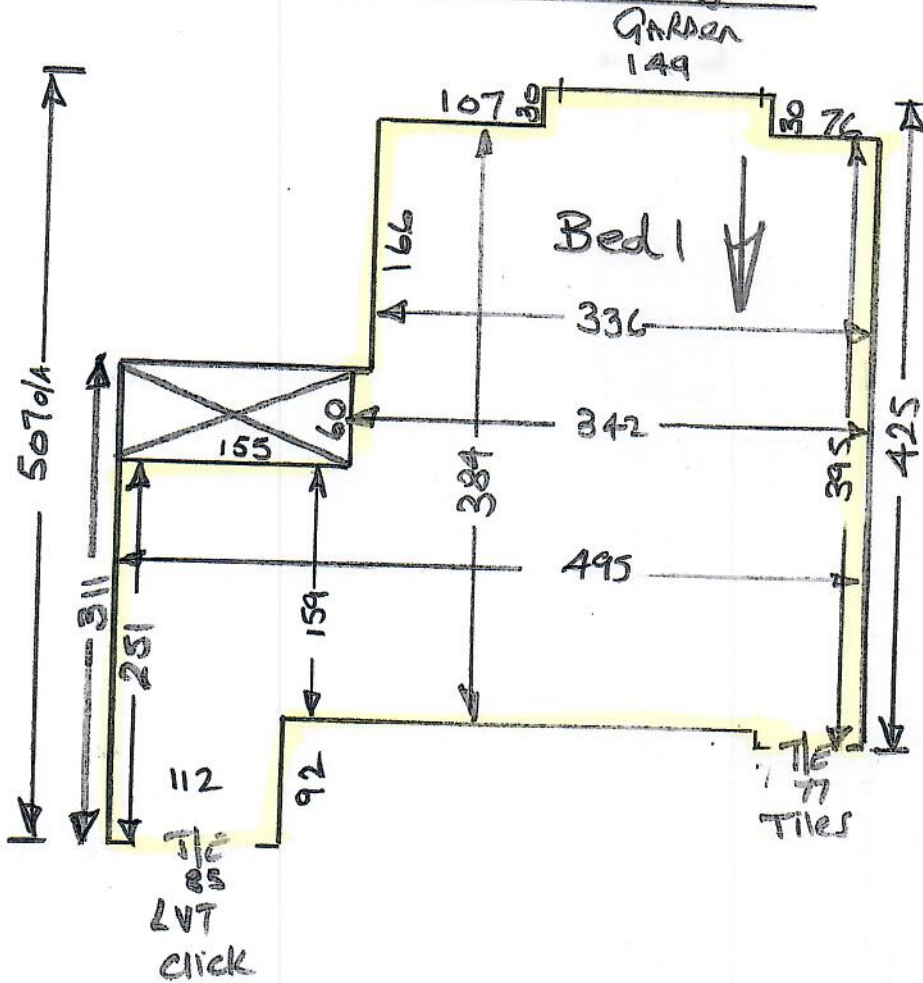
Flat 3 (Ground floor Right)

Phase 1

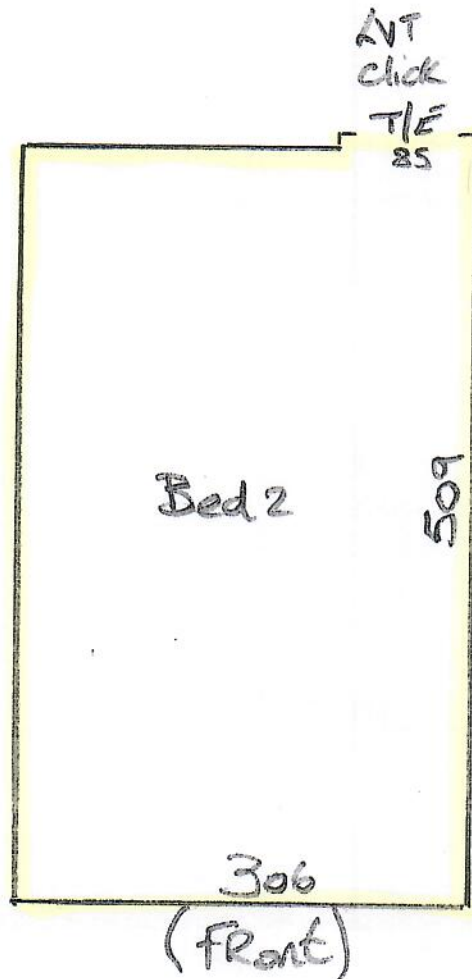
R19404
Inicio Bespoke

10 of 15

This is the Showflat



V/Lay = 36.50m²
 S/E = 25 sticks
 T/E = 1 x 2.70m
 Seaming

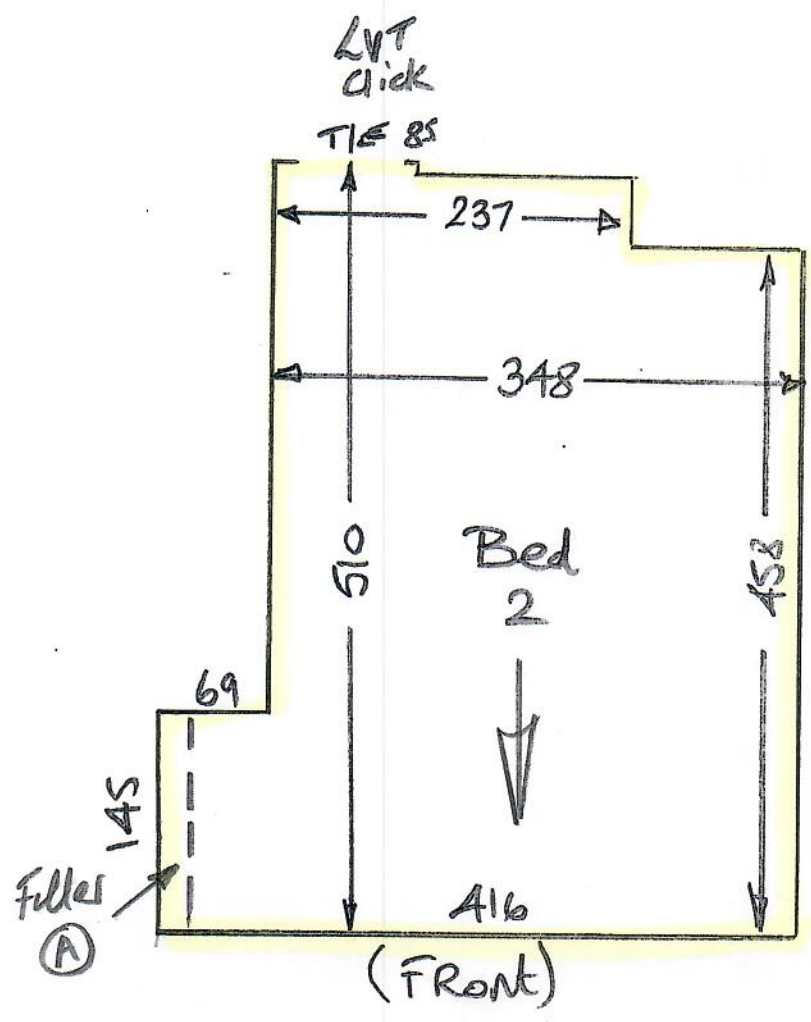
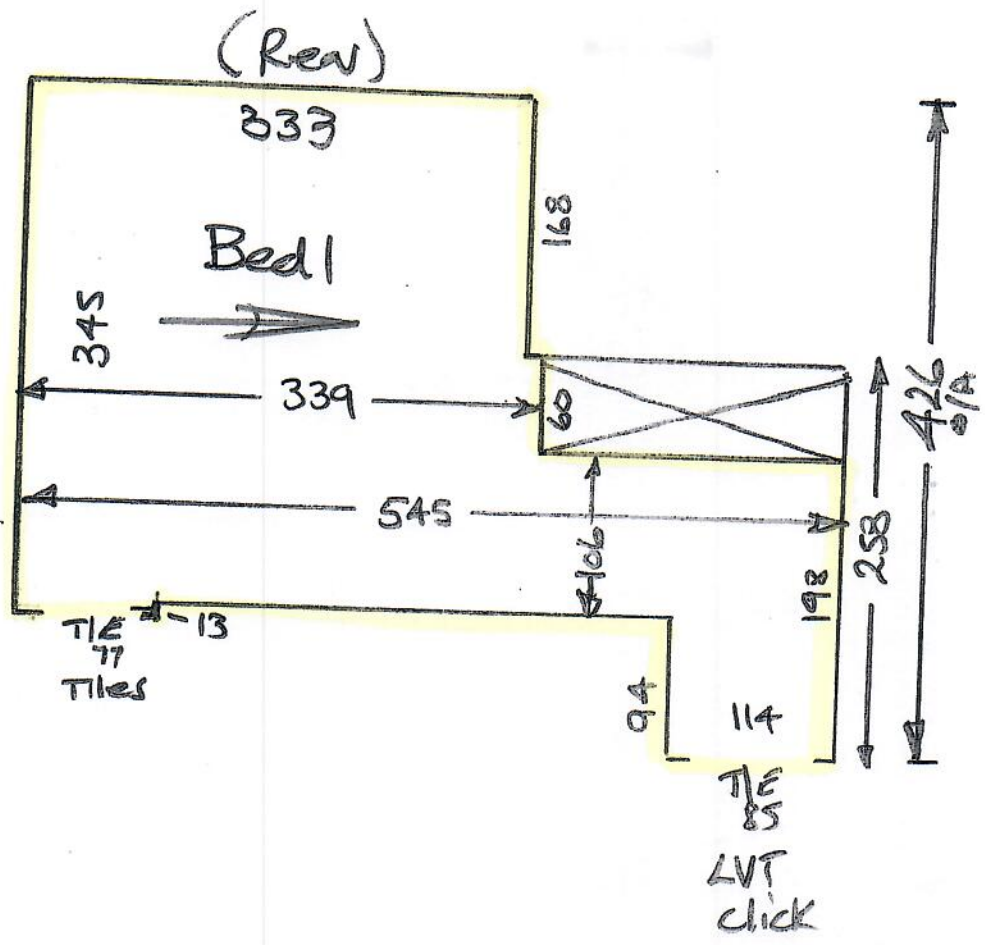


Flat 4 (1st floor left)

PHASE 1

R19404
Inicio Bespoke

11 of 15



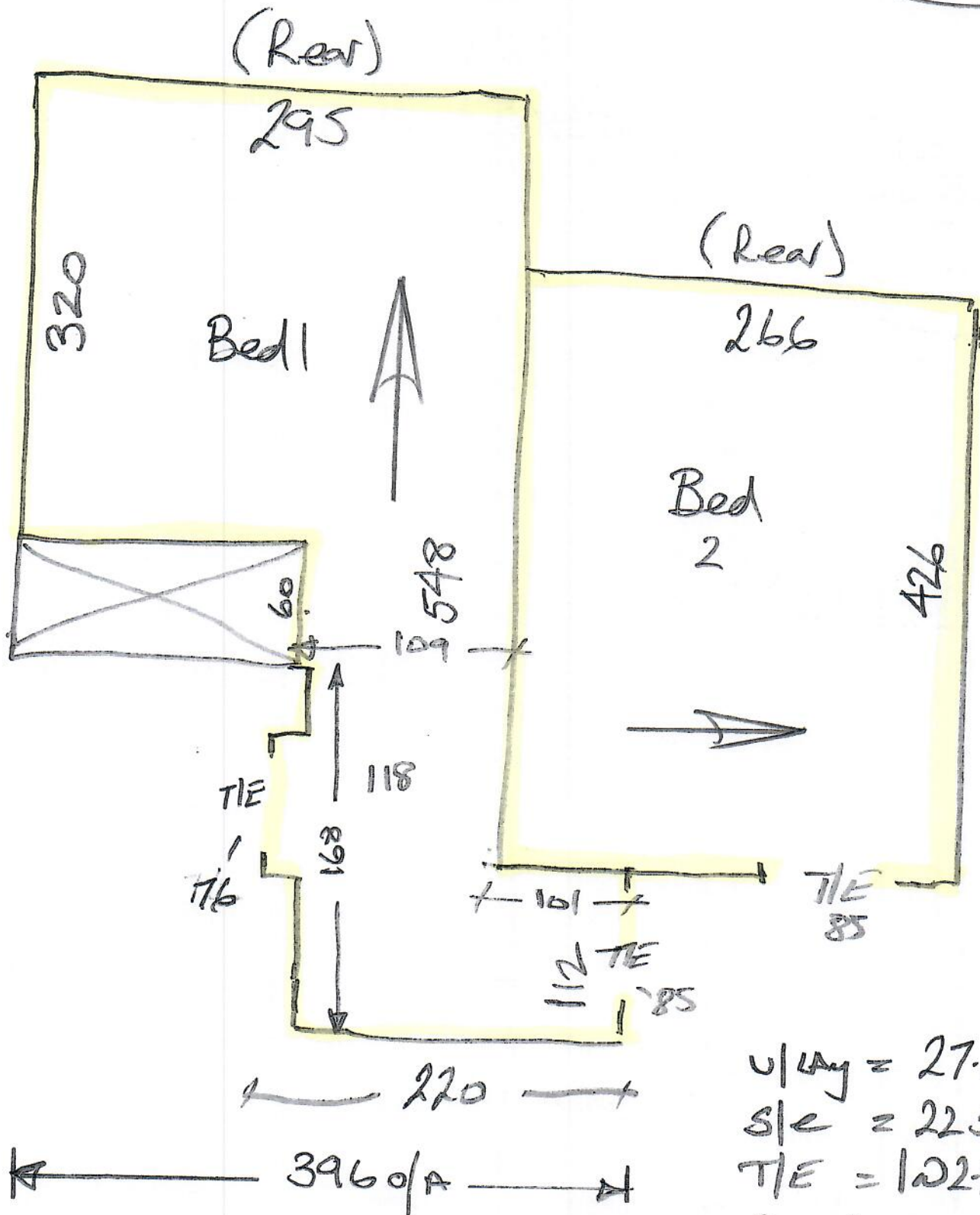
$V/Lay = 37.50m^2$
 $Stk = 25 sticks$
 $T/E = 102.70m length$
 $Seaming = 1.50Lm$

Flat 5 (1st floor Middle)

PHASE 1

R19404
Inicio Baspoke

12 of 15



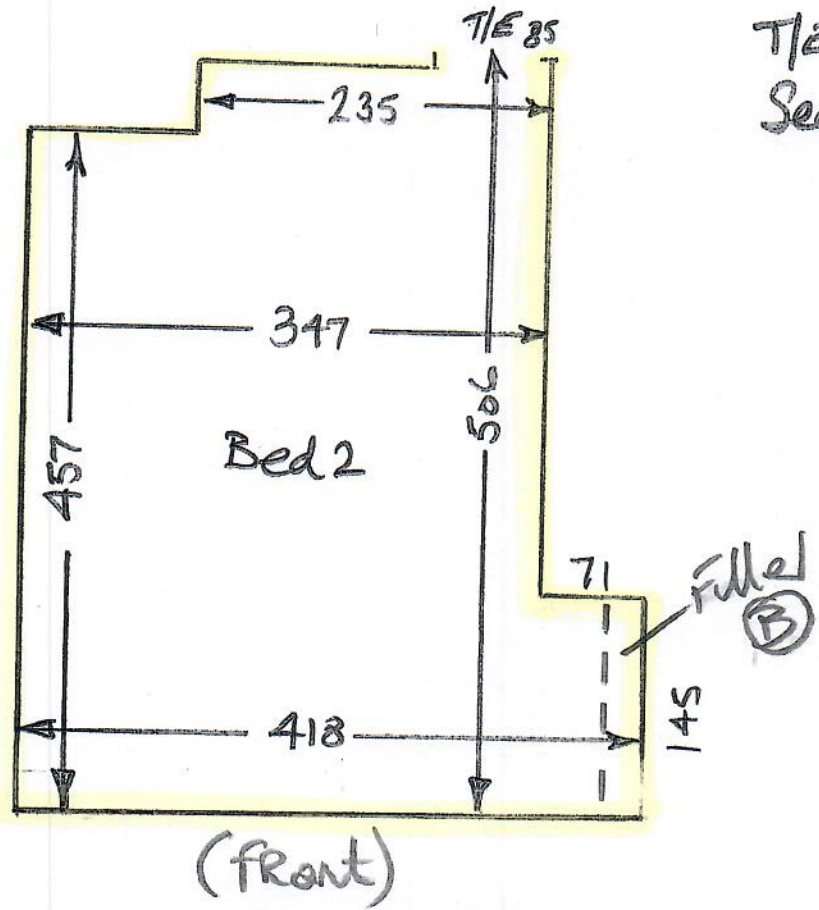
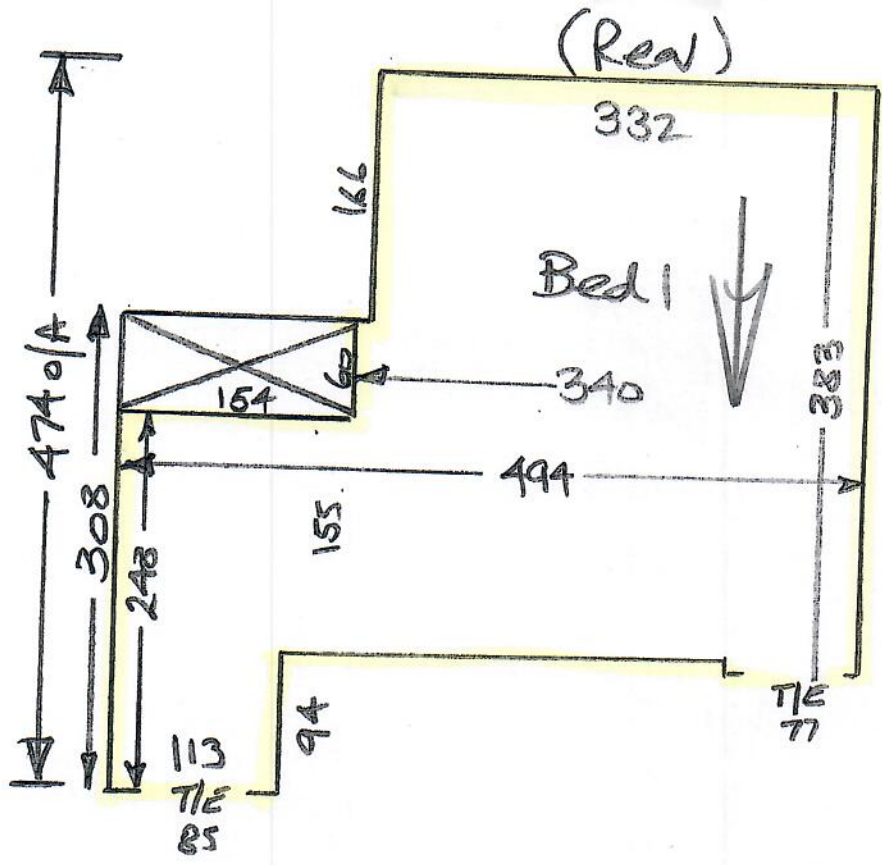
U/Lay = 27.50m²
 S/e = 22 sticks
 T/E = 102.70m
 Seaming

Flat 6 (1st floor Right)

Phase 1

R19404
Inicio Bespoke

13 of 15



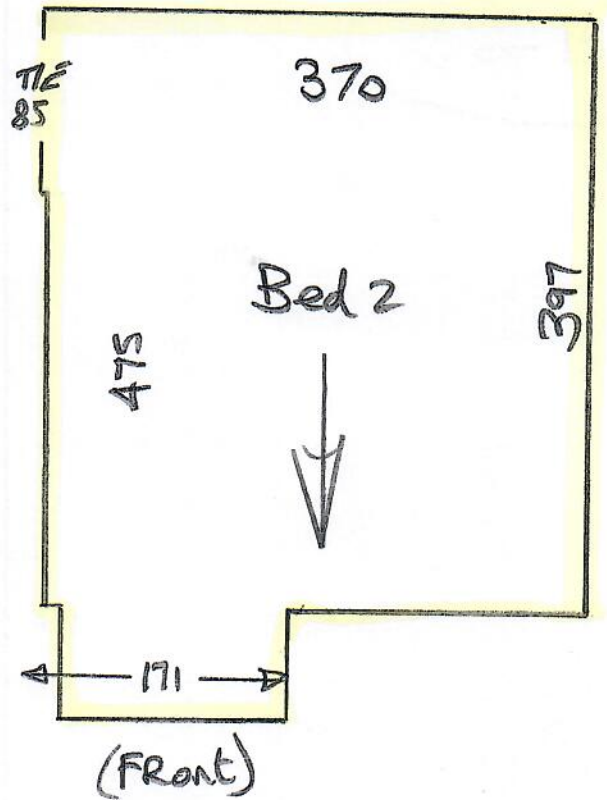
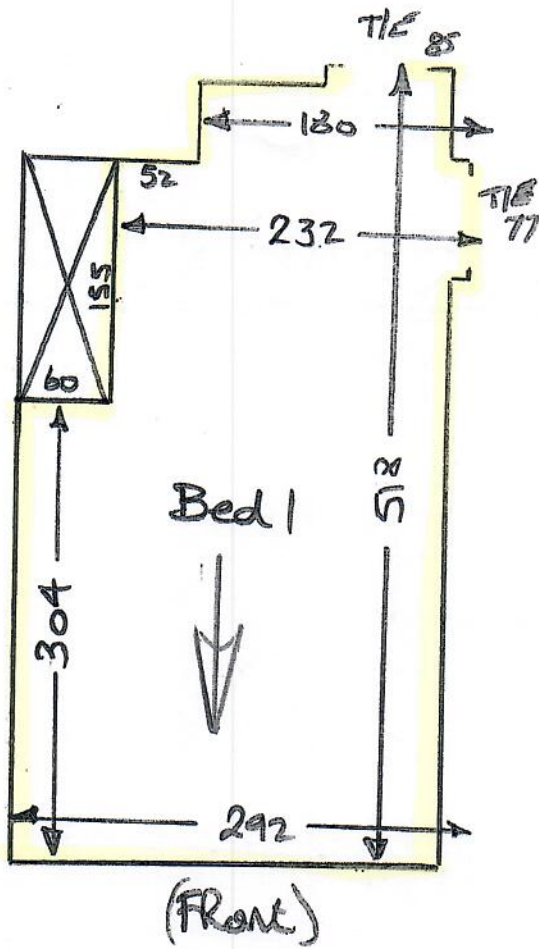
V/Ay = 39m²
 sle = 25 sticks
 T/E = 122.70m long
 Seaming 1.50km

Flat 8 (2nd floor Right)

PHASE 1

R19404
Inicio Bespoke

15 of 15



$V/LAY = 33m^2$
 $S/E = 22 sticks$
 $T/E = 1027m length$