

4m Wide

R19404
Inicio Bespoke

1 of 6

Lulworth

Col. LW-37

Ammonite

Flat 2 - Bed 2 315 x 400

~~Cut Plan ① 1020 x 400~~

~~Cut Plan ② 940 x 400~~

~~Cut Plan ③ 525 x 400~~

~~Cut Plan ④ 525 x 400~~

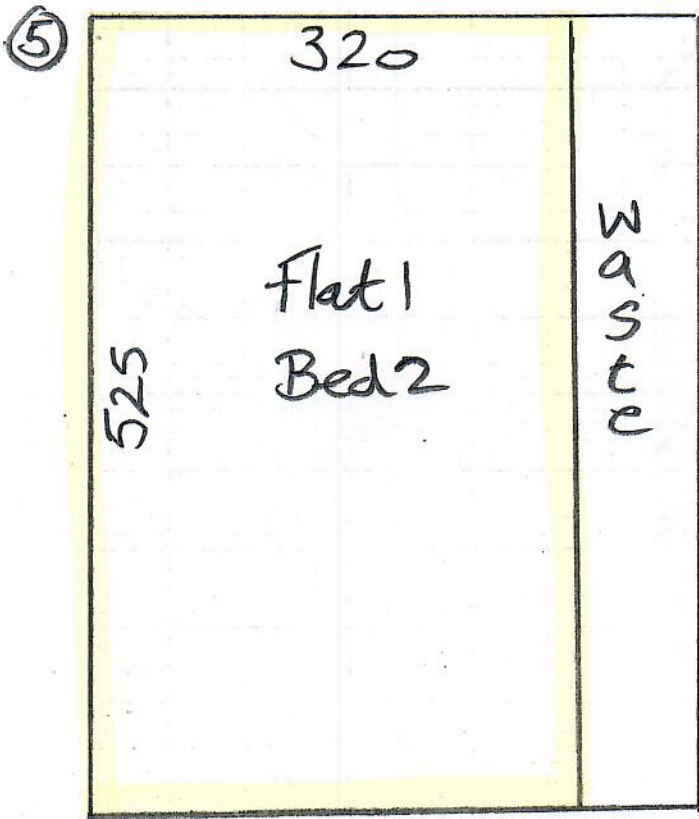
Cut Plan ⑤ 525 x 400

~~Cut Plan ⑥ 525 x 400~~

43.75 x 400

= 175m²

Phase 1 - Flats 1 + 2 (w/c 17/3/25)



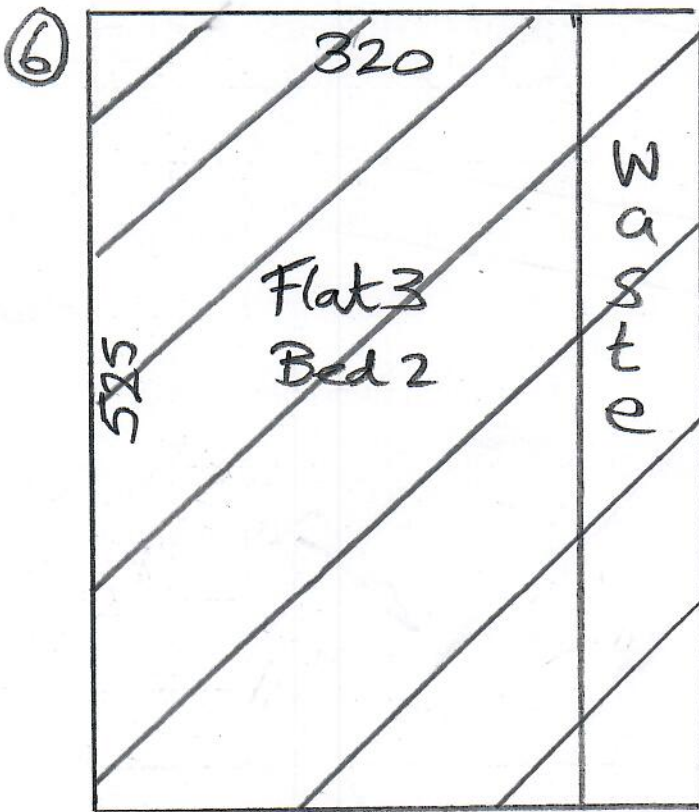
4m wide

R19404
Inicio Baspek

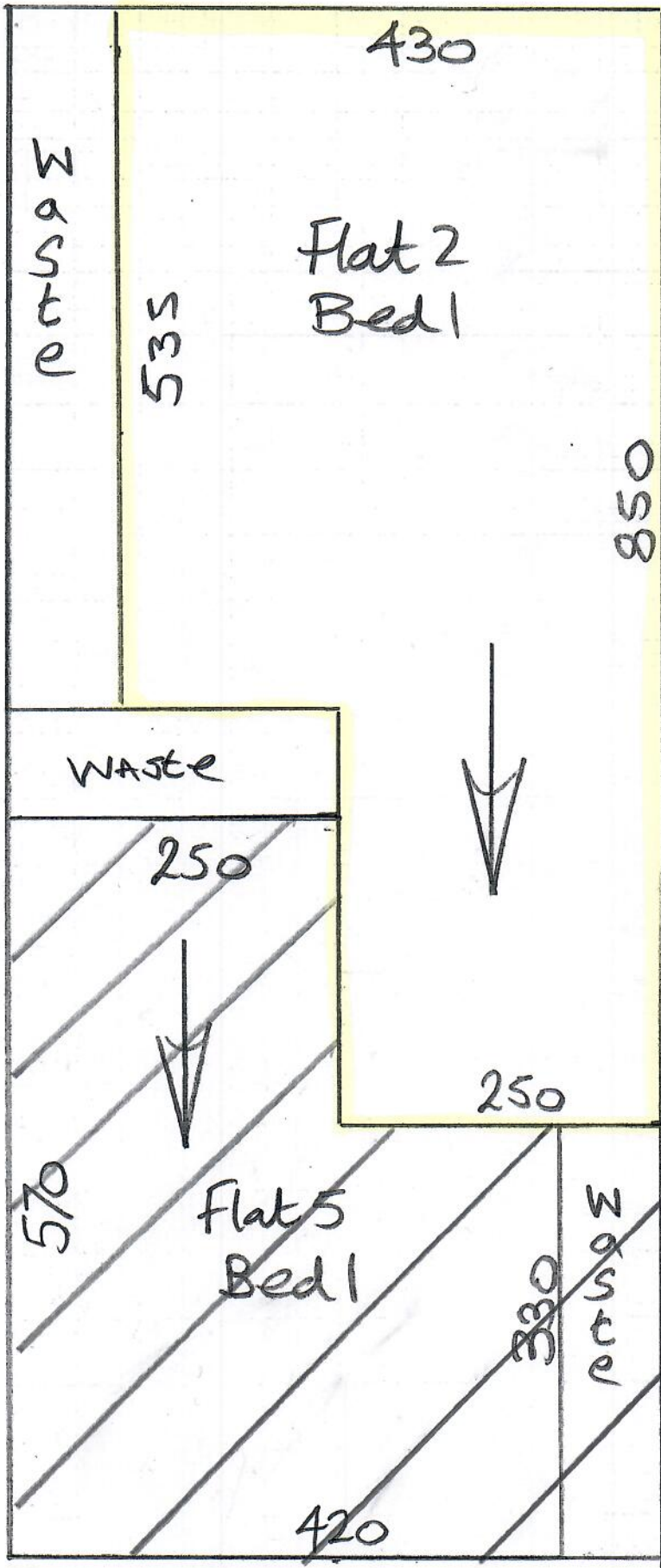
2 of 6

Lulworth

Col. LW-37 (Ammonite)



⑦



5m Wide

R19404
Inicio Bespoke

3 of 6

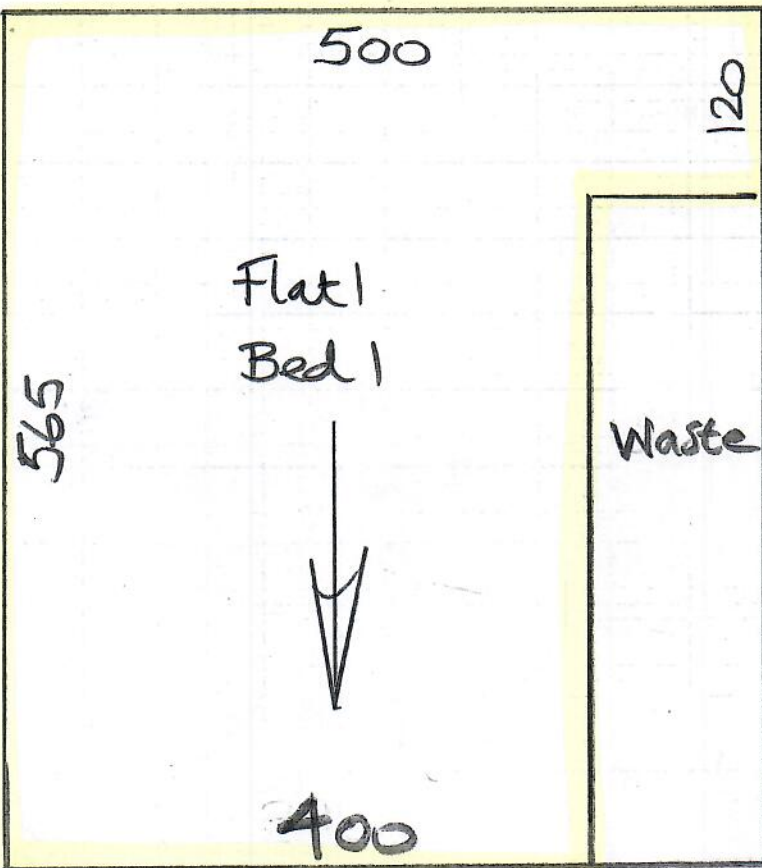
Lulworth
Col LW-37 (Ammonite)

- Cut Plan ⑦ 1180 x 50
 - Cut Plan ⑧ 955 x 50
 - Cut Plan ⑨ 280 x 50
 - Cut Plan ⑩ 565 x 50
 - Cut Plan ⑪ 525 x 50
- 3505 x 50
= 175.25m'



5m wide

⑩

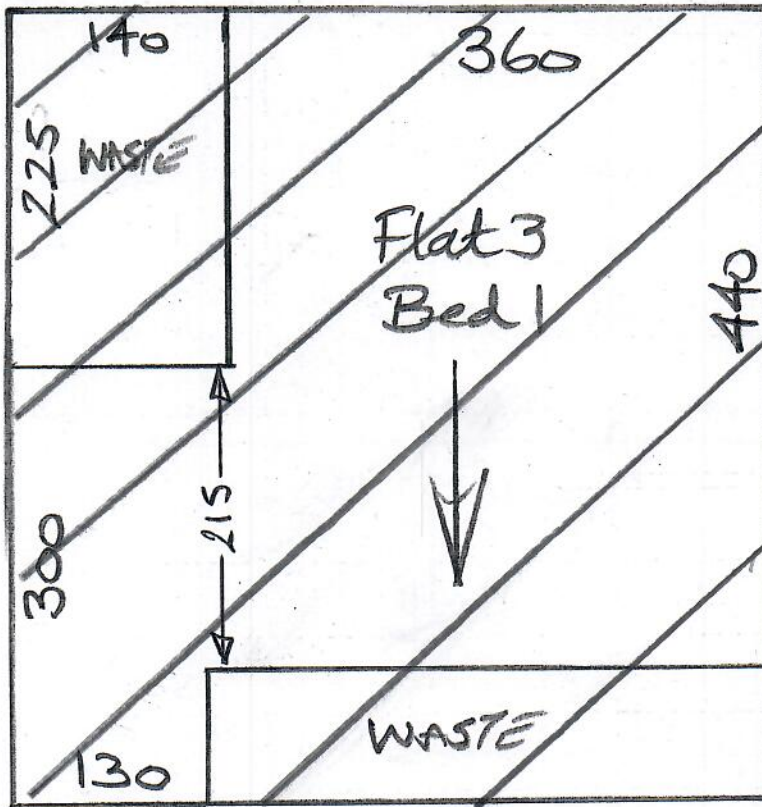


R19404
Inic's Bespoke

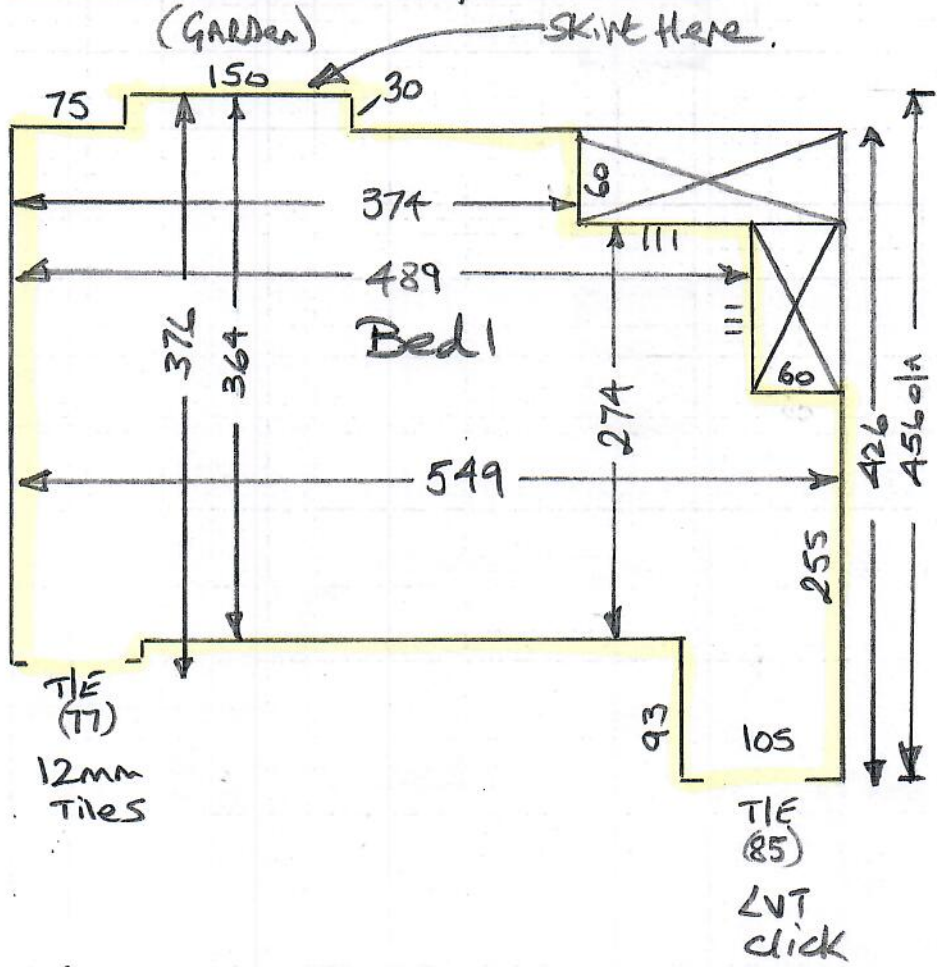
4 of 6

Lulworth
61. LW-37 (Ammonite)

⑪



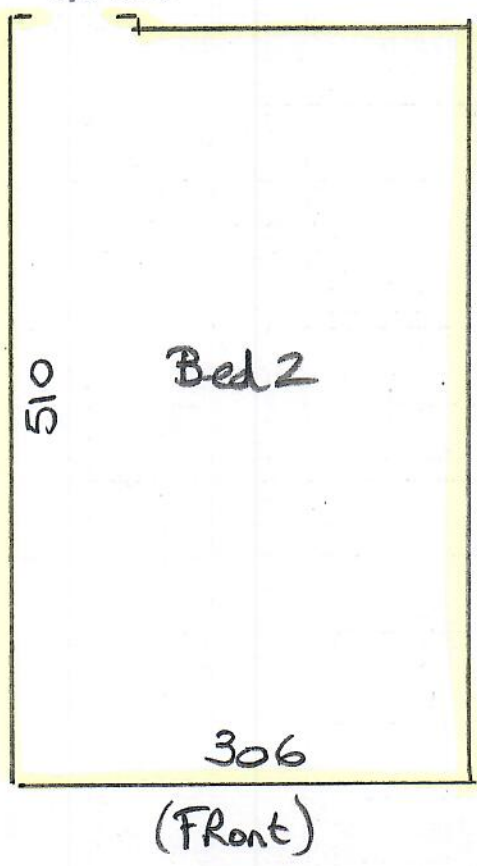
Flat 1 (Ground floor Left)



R19404
Inicio Bespoke

5 of 6

LVT
click
T/E (85)

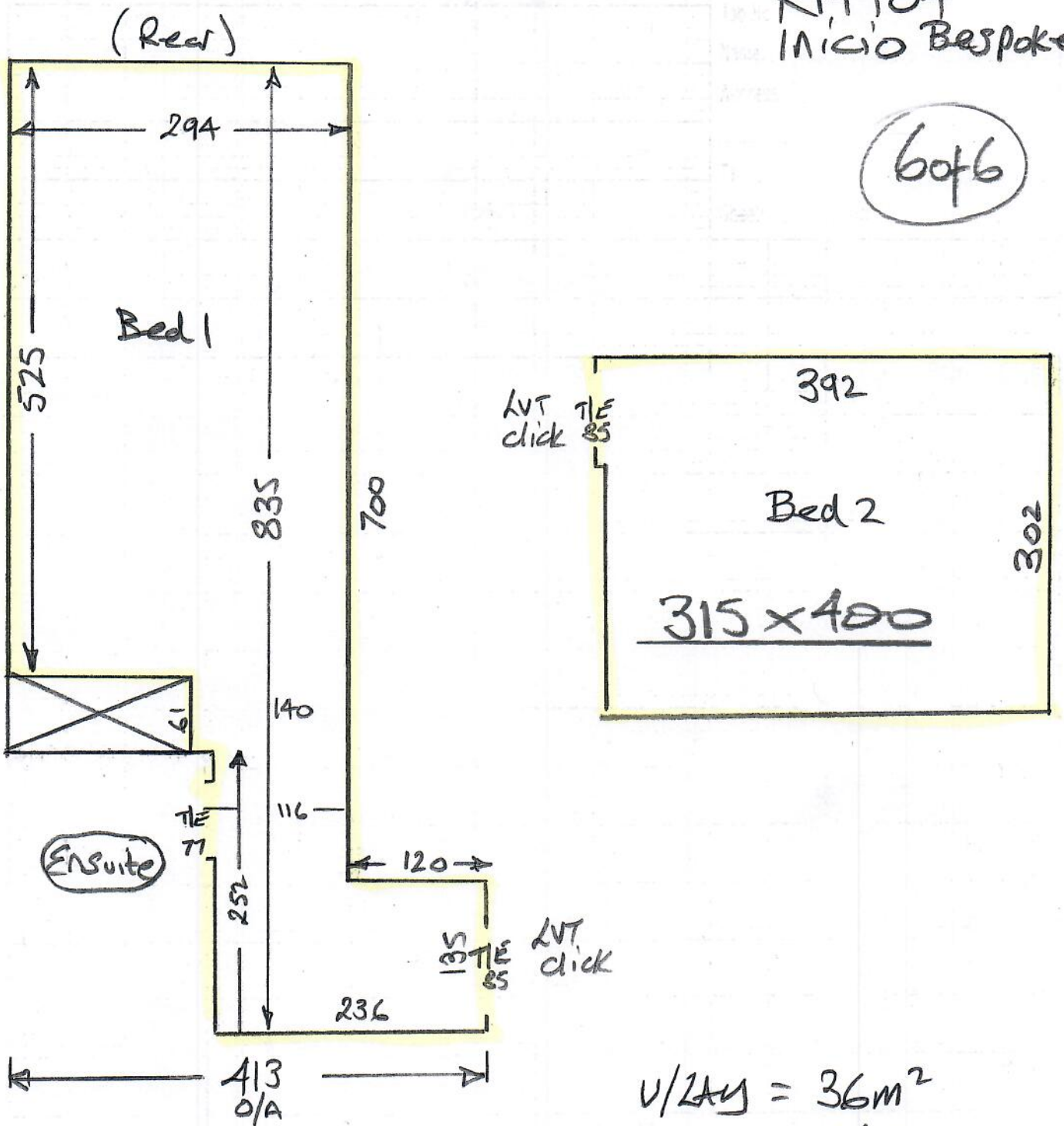


V/Lay = 38M²
 Ste = 25 sticks
 T/E = 1 x 2.70m length
 Seaming =

Flat 2 (Ground floor Middle)

R19404
INICIO Bespoke

60f6



$V/2AY = 36m^2$
 s/e = 26 sticks
 T/E = 1 x 2.70m
 Seaming =