

~~TOP FLIGHT~~

~~$1/2$ ANISEN = 17 x 77 ✓~~

~~$1/4$ UAND = 102 oir x 67 ✓~~

~~3x STAIN = 44 x 66 ✓~~

~~$w_1 = 89 x 78 ✓$~~

~~$w_2 = 59 x 89 ✓$~~

~~$w_3 = 60 x 60 ✓$~~

~~$w_4 = 56 x 74 ✓$~~

~~$w_5 = 61 x 92 ✓$~~

~~$w_6 = 61 x 66 ✓$~~

~~1x STAIN = 44 x 66 ✓~~

~~B/W 1 = 45 x 86 ✓~~

~~NEW ULAM~~

~~+ GRIPPER~~

~~UPUT REQ.~~

~~QUOTE~~

~~FLIGHTS~~

~~SEPARATELY~~

2x STAIN 44 x 80

$1/2$ UAND = 108 oir x 193 ✓

10x STAIN = 43 x 80

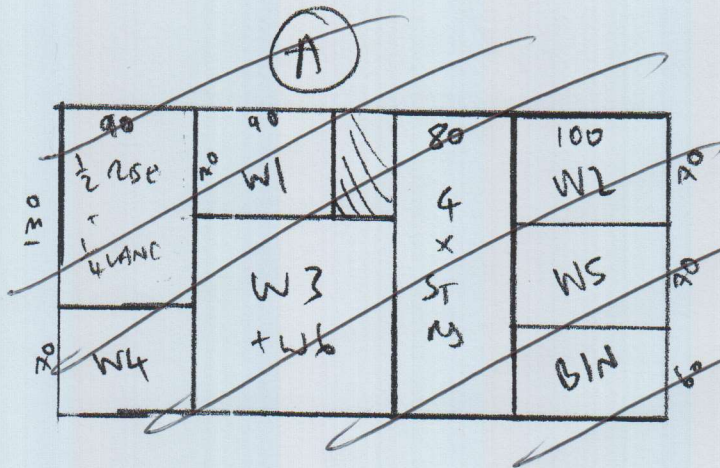
B/W 2. = 43 x 87

1ST

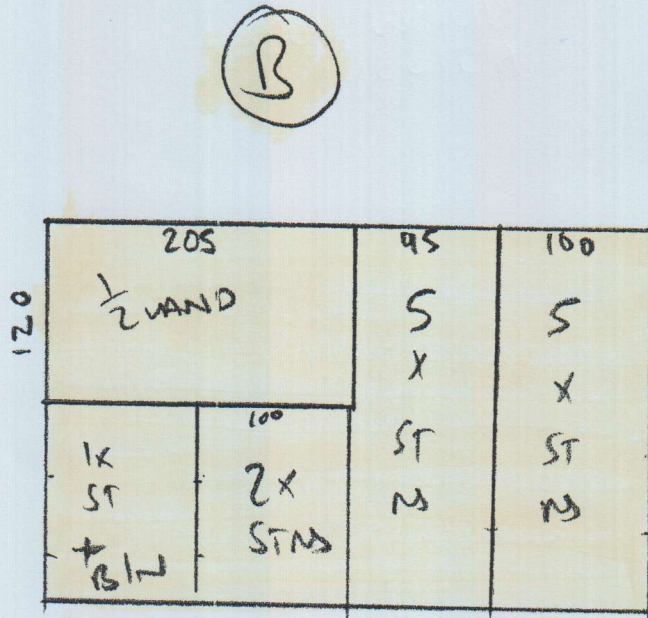
FLIGHT

NEW ULAM + GRIPPER

~~UPUT REQ.~~



(A) = TOP FLIGHT
2m x 4m



(B) = 1ST FLIGHT
2.5 m x 4m