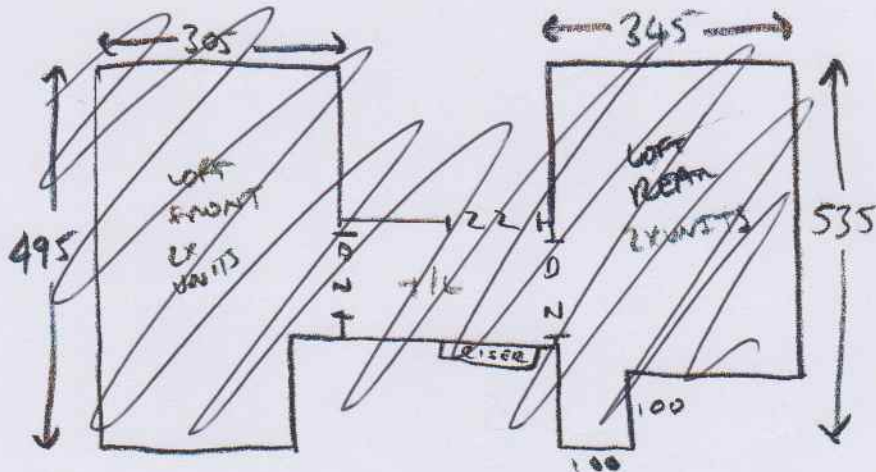
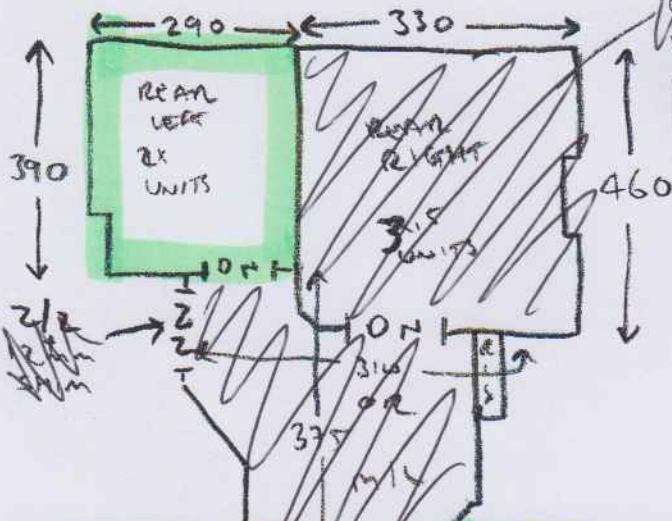


VISIT 1 - BIUM 26/3/18

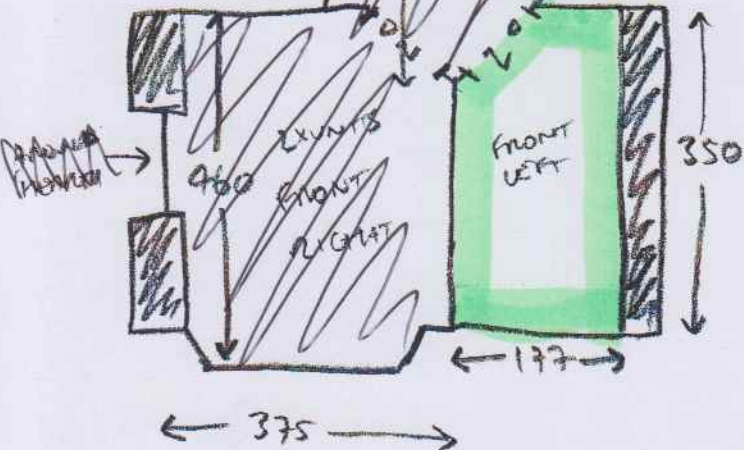


SILVER BARS.
UPUTT + FURT MOVE
NEW U/LAN
10X STICKS OF GRIPPER

- T/L = 1350 x 200 ✓
- 1 x STM = 44 x 85 ✓
- W1 = 55 x 92 ✓
- W2 = 60 x 118 ✓
- W3 = 60 x 120 ✓
- W4 = 60 x 83 ✓
- 2 x STM = 44 x 83 ✓
- W5 = 57 x 92 ✓
- W6 = 63 x 115 ✓
- W7 = 58 x 118 ✓
- W8 = 58 x 84 ✓
- 2 x STM = 44 x 84 ✓
- D/N = 46 x 100 ✓



COULDS TO UNSURELY 2x UNITS
17 CAN BE MOVED



- 4 x STMS = 43 x 82 ✓
- W9 = 64 x 92 ✓
- W10 = 67 x 18 ✓
- W11 = 70 x 82 ✓
- 7 x STMS = 43 x 84 ✓
- 4 x STM = 40 x 86 ✓
- D/N = 50 x 100 ✓

DINAPS TO BE CHANGED
WHEN STANDS ARE DONE

~~OPTIONAL~~

VISIT 1 - BILLY 26/3/18

~~LEFT REAR - 25.48 x 4m~~

REAR LEFT - 3m x 4m

~~REAR FRONT - 24.70 x 4m~~

FRONT LEFT - 1.90 x 4m

~~FRONT FRONT - 4.70 x 4m~~

} 20.25
x
4m
ORDERED

LEFT FRONT - 23.15 x 5m