

OPTION 2

S29934

CONAGHAN

LEFT REAR - 5.45 x 4m

REAR LEFT - 3m x 4m

REAR RIGHT - 4.70 x 4m

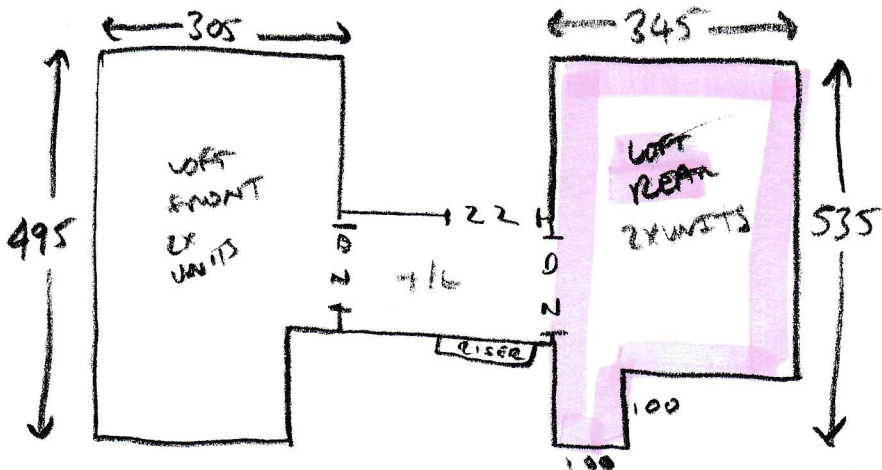
FRONT LEFT - 1.90 x 4m

FRONT RIGHT - 4.70 x 4m

} 20.25
x
4m
ORDERED

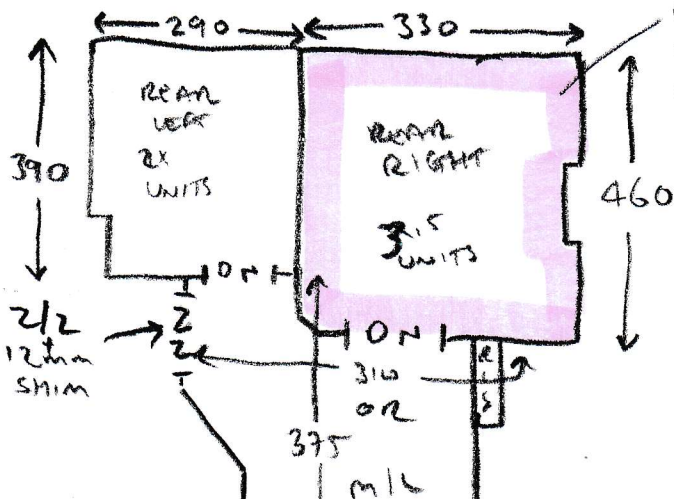
LEFT FRONT - 3.15 x 5m

PHASE 2



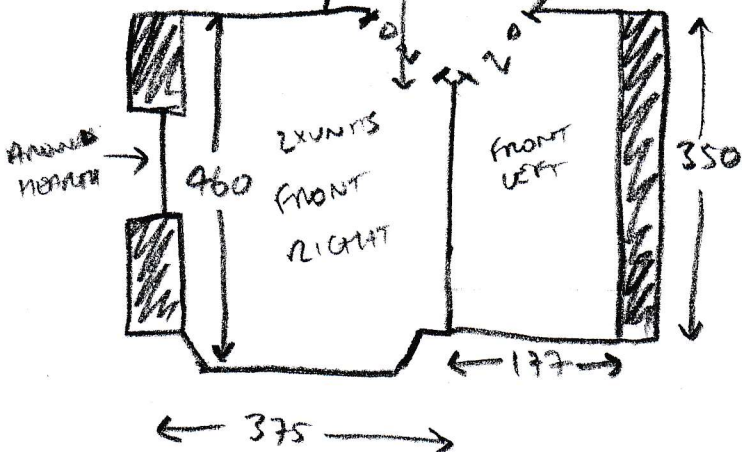
SILVER BARS.
 UPFIT + FURT MOVE
 NEW U/LAM
 10X STICKS OF GRIPPER

- T/L = 1350 or 2x200 ✓
- 1x STR = 44x85 ✓
- W1 = 55x92 ✓
- W2 = 60x115 ✓
- W3 = 60x120 ✓
- W4 = 60x83 ✓
- 2x STR = 44x83 ✓
- W5 = 57x92 ✓
- W6 = 63x115 ✓
- W7 = 58x113 ✓
- W8 = 58x84 ✓
- 7x STR = 44x84 ✓
- D/W = 46x100 ✓



CUST TO UNSCREW WARDMORE FROM WITH SO IT CAN BE MOVED

- 4x STR = 43x82 ✓
- W9 = 64x97 ✓
- W10 = 67x118 ✓
- W11 = 70x82 ✓
- 7x STR = 43x84 ✓
- 1/4 LAM = 110 or 120x86 ✓
- D/W 2 = 50x100 ✓



PHASE 2