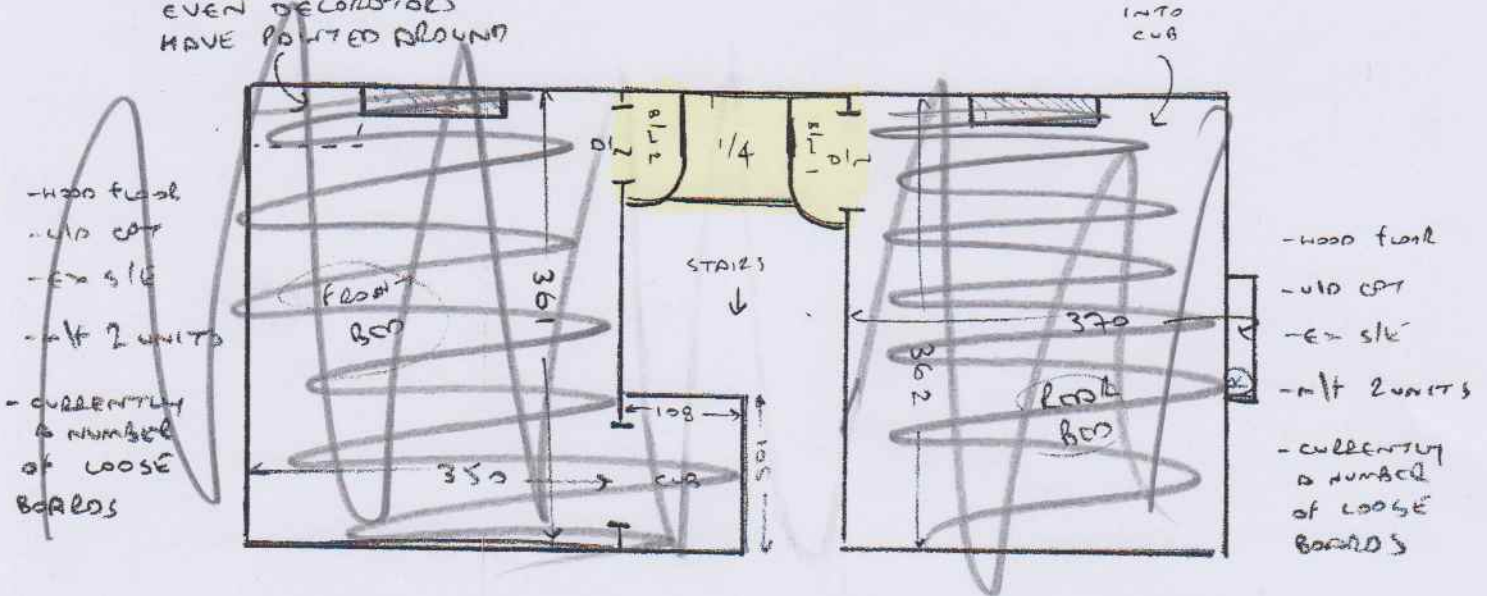


13/4/18
 HIGHLIGHTED
 AREAS

MARK

LARGE LGE.
 HE CAN'T MOVE
 EVEN DECONTROLS
 HAVE POINTED AROUND



STAIRS

STEPS INTO


Rooms 2e	30	80
b/c 1	40	110
b/c 2	40	110
1/4	115	94
g e	45	94
Bottom STEP	45	103

STAIRS

- wood floor
- no u/d
- needs s/k

↑
 DONE
 13/4/18

①

SS	1.30 B/W 1	1.30 B/W 2	1.40 Bottom Step
1.00 1.40 1/4	1.00 2.00 ④ STLS	1.00 ④ STLS	1.00 ③ STLS
			

Plan ① $2.55 \times 4m$

10.2m²