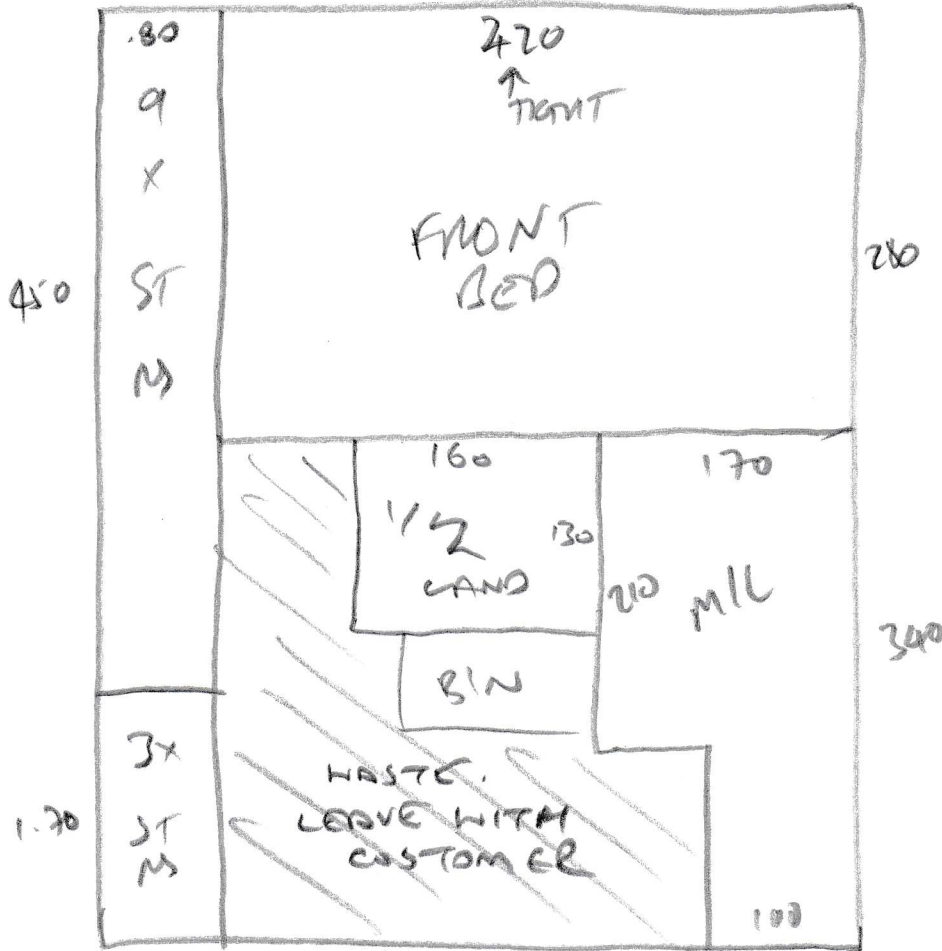
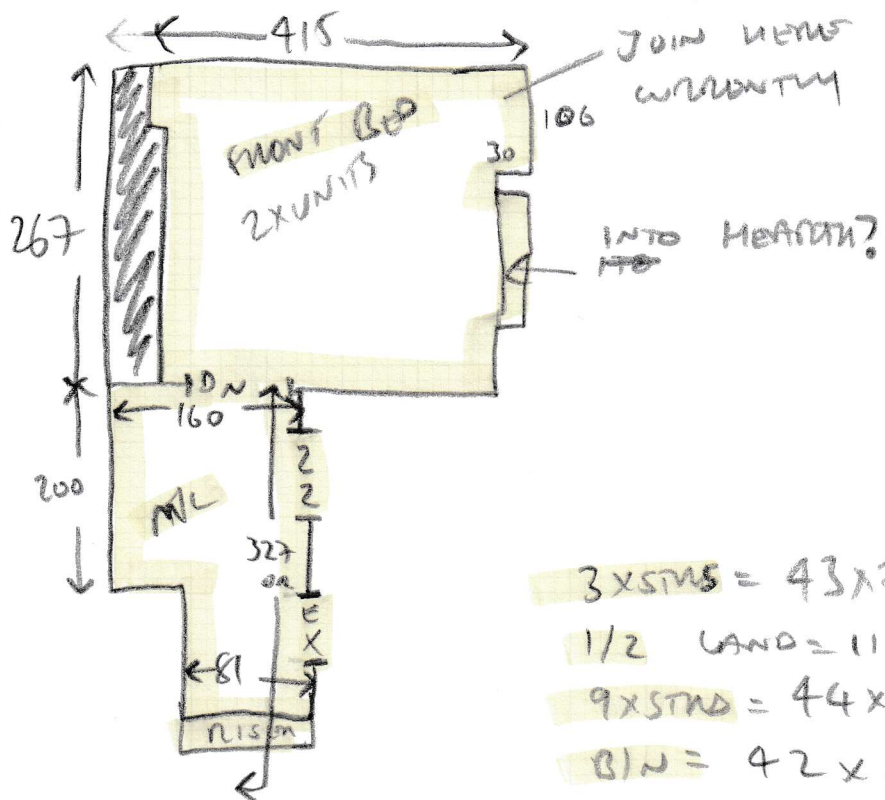


S30075  
MARSH



62x5 M  
31.00

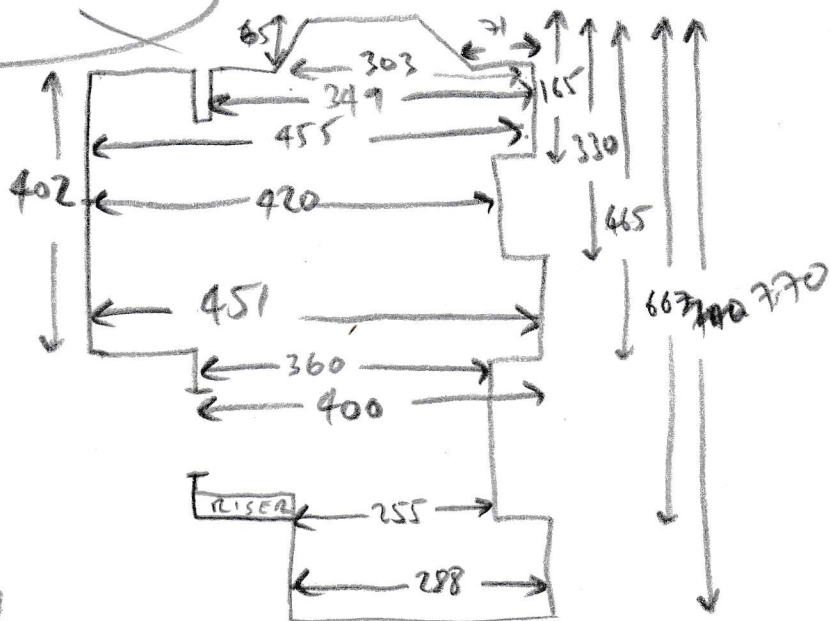
MORE WASTEFUL (2.550m more)  
BUT P. DIMENSION MATCHES  
FRONT BED + MIL



- 2x FURN
- UPLIFT HERE TO FRONT BED, MIL + 3x STND
- EXIST GRIP TO FIBED, MIL + 3x STND
- FULL PROP TO 1/2 LAND + MAIN STND
- POSSIBLY RUNNER TO MAIN STND

- 3x STND = 43 x 70
- 1/2 LAND = 113 OR x 146
- 9x STND = 44 x 70
- BIN = 42 x 86

LOUSE



NO OVER ON  
SUBFLOOR. RECOMMEND  
6mm WBP PM AS POSSIBLE  
CHIP BOARD SUB

• CURRENTLY LAMINATE DOWN