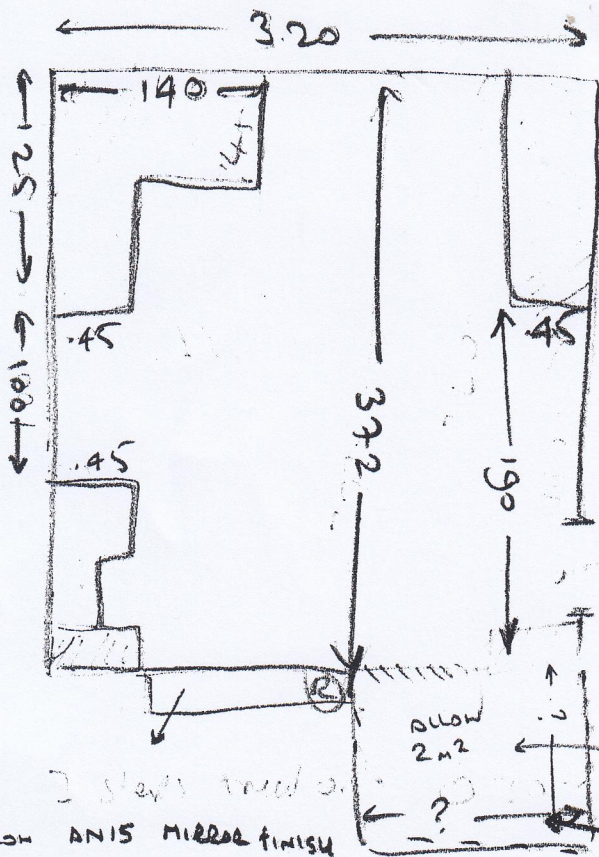


KITCHEN

NET MEASUREMENT

1700mm x 3200mm

(S 30119
PANTHEASTHE



low 4/18s...
WATERGAS...
(GAS WORKS)

18
10/1
25/6
7/1
26/6

QUOTE TO RE-POLE
KITCHEN + PLATFORM
IN ANTILO SPACIA
SS SW2533 FEATURED OAK
WIDE PLANK. (2m2 BOXES)

WE NEED THERE TO BE
A 7mm DIFFERENCE BETWEEN
HALL TILES WHEN LAID +
PLYWOOD BASE IN KITCHEN
IN ORDER FOR US TO BUTT UP
FIT TILE LIP SATIN GLOSS FINISH

PLATFORM NOT BUILT
WHEN MEASURED.

PLATFORM NOW BUILT THAT HAS A
LARGE DOUBLE FRIDGE PLUMBED
INTO WATER FEED. WE CAN NOT
MOVE THIS!

2 steps raised to
ALLOW ANIS MIRROR FINISH
TO 4x STEPS.
FITTING TILES ONLY.

OUR ORIGINAL INSTALLATION
SUFFERED A LEAK

UNDISPATCH ACTIONED
BY BUILDER

SCREENED OVER
BUILDER
PLY -

PAINT DAY

MON 25/6 - SCREEN

TUE 26/6 - FIT
LVT

HYGROMETER READING
TAKEN 19-23 74%