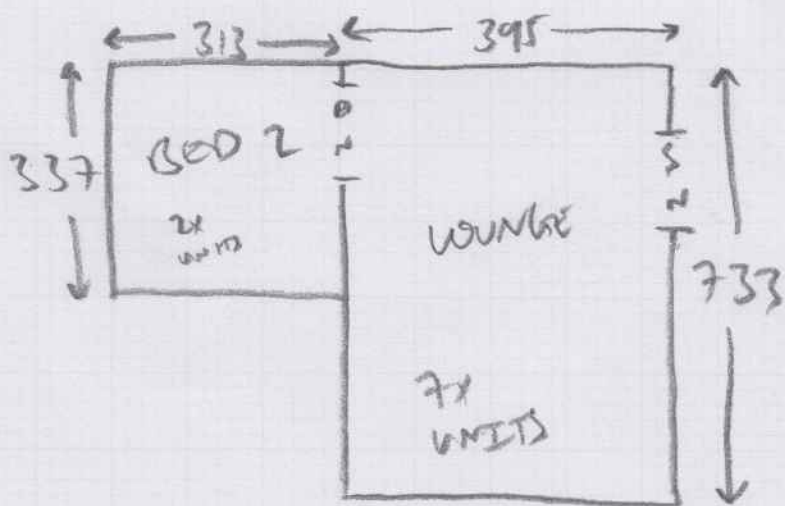


$$\text{BED 1} = 3.30 \times 500$$

$$\text{BED 2} = 3.25 \times 400$$

$$\text{LOUNGE} = 7.45 \times 400$$



3x UNSOUND ~~UNITS~~ UNITS IN LOUNGE - COST AWARE

FURN + UPST MEQ - MOST DAMAGED

CONC SUB

EXIST GRIPPER

NEW 8mm FOAM

* 4TH FLOOR, VISITORS PARKING SPACE
AT FAR END OF CARPARK OPPOSITE
BUILDING *