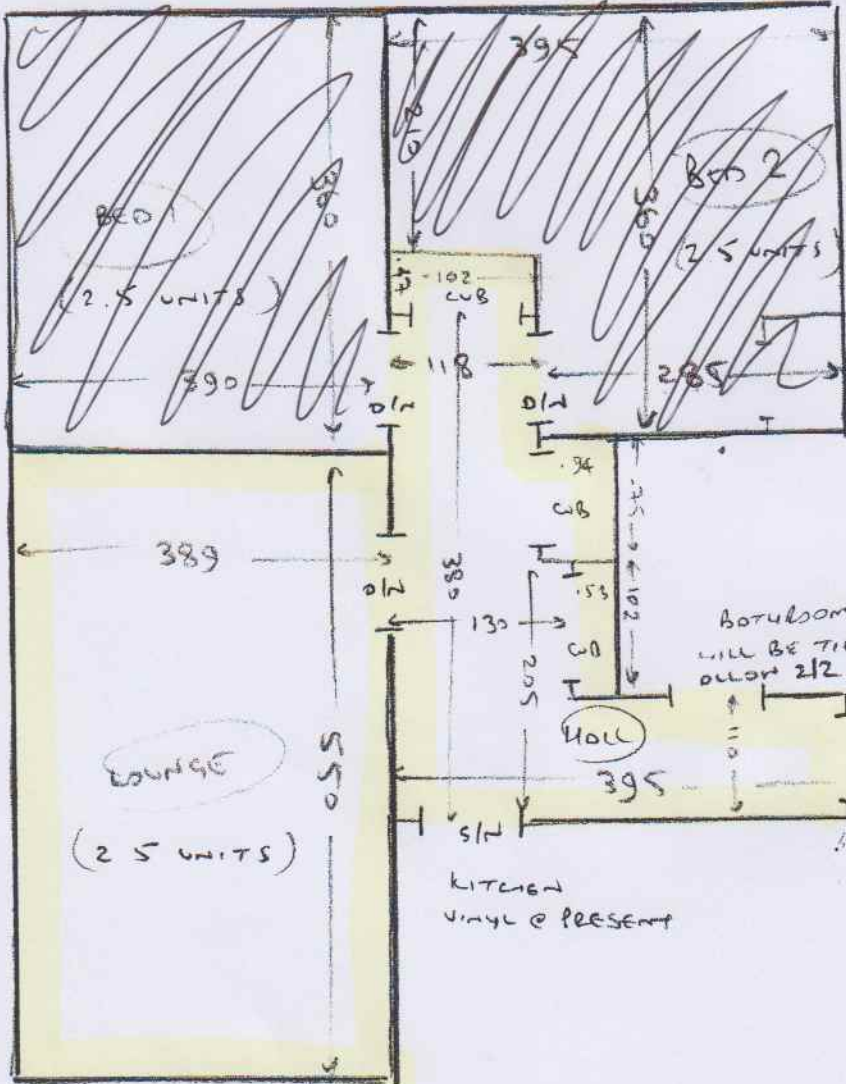


9/11/18

LOUNGE + UPAU

GREY



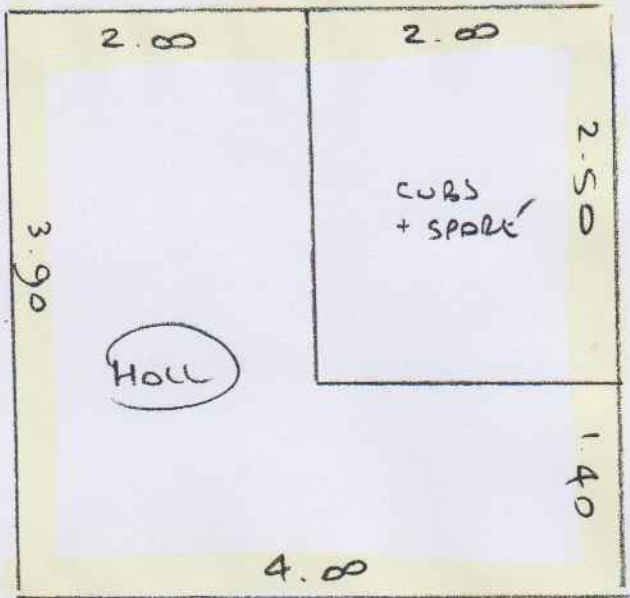
COFF + UPAU
 UPAU
 EX S/L
 M/H
 SEE NOTE BELOW

CONC FLOOR
 UPAU
 EX S/L
 M/H
 SEE NOTE BELOW

- CONC FLOOR
 - UPAU
 - EX S/L
 - M/H SEE NOTE BELOW

FLOOR
 EX 2 AND 0 D/W

NOTE:-
 - flat is on 2nd floor
 - Rooms are full of personal items that customer + friends will clear leaving usual furniture that has been emptied. Allow 2.5 units per room



GREY

9/11/18
LOUNGE + HALL

Lounge 5.60 x 4.00
~~16.60 x 3.90 x 4.00~~
~~16.60 x 3.90 x 4.00~~
 Plant 3.90 x 4.00
 16.90 x 4.00

16.90 x 4.00