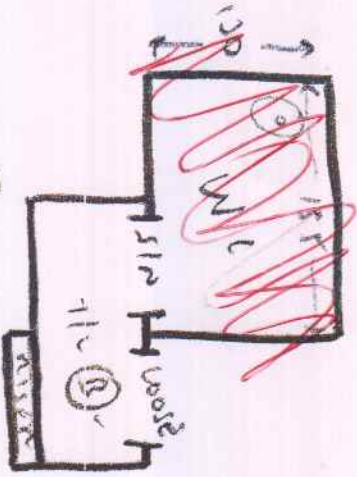


TIL ① = 95 on = 68"
 2x5 TMS = 44 x 62"

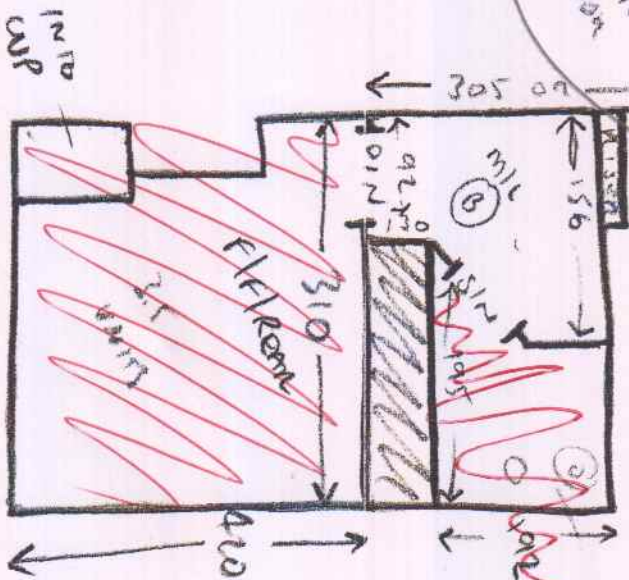
PHASE 2



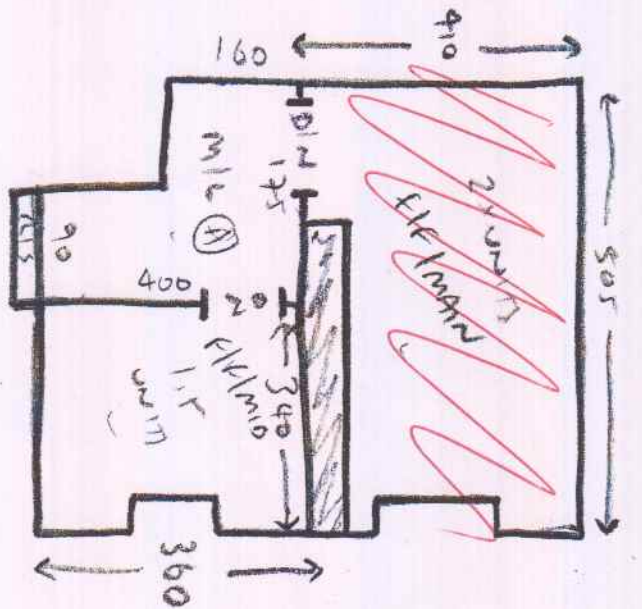
TIL ② = 142 on x 150"
 10 x 5 TMS = 44 x 62"
 812 1 = 44 x 93"

SILVER DEMO MOVE
 UPPER + LOWER JUMP
 EXIST CRIPPER JUMP JUMP
 (WALL PARTS)
 LINE TO UPPER JUMP
 + CRIPPER

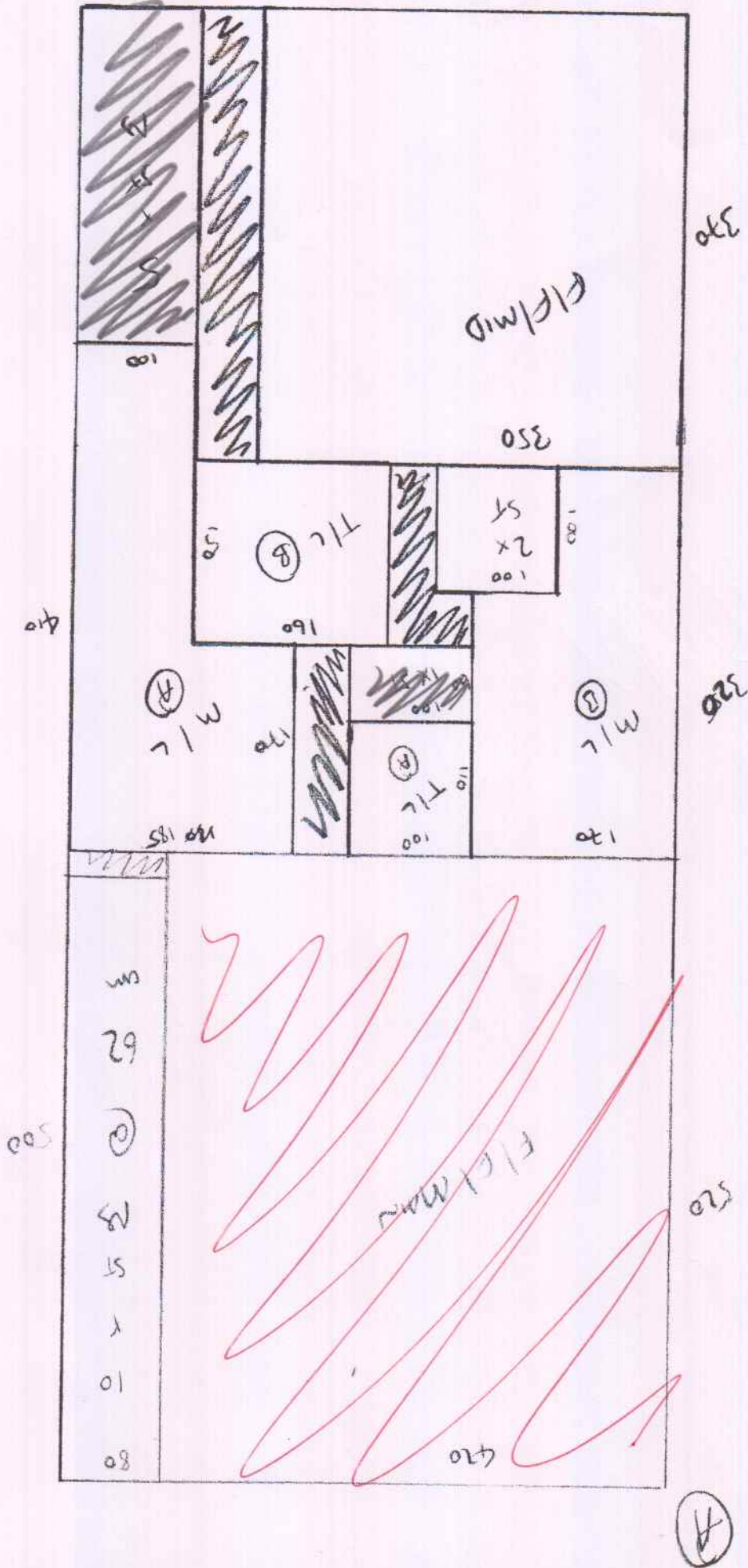
Diff CP
 12x5 TMS = 44x76"
 812 2 TO LAND FROM



INSIDE = 44 x 76"

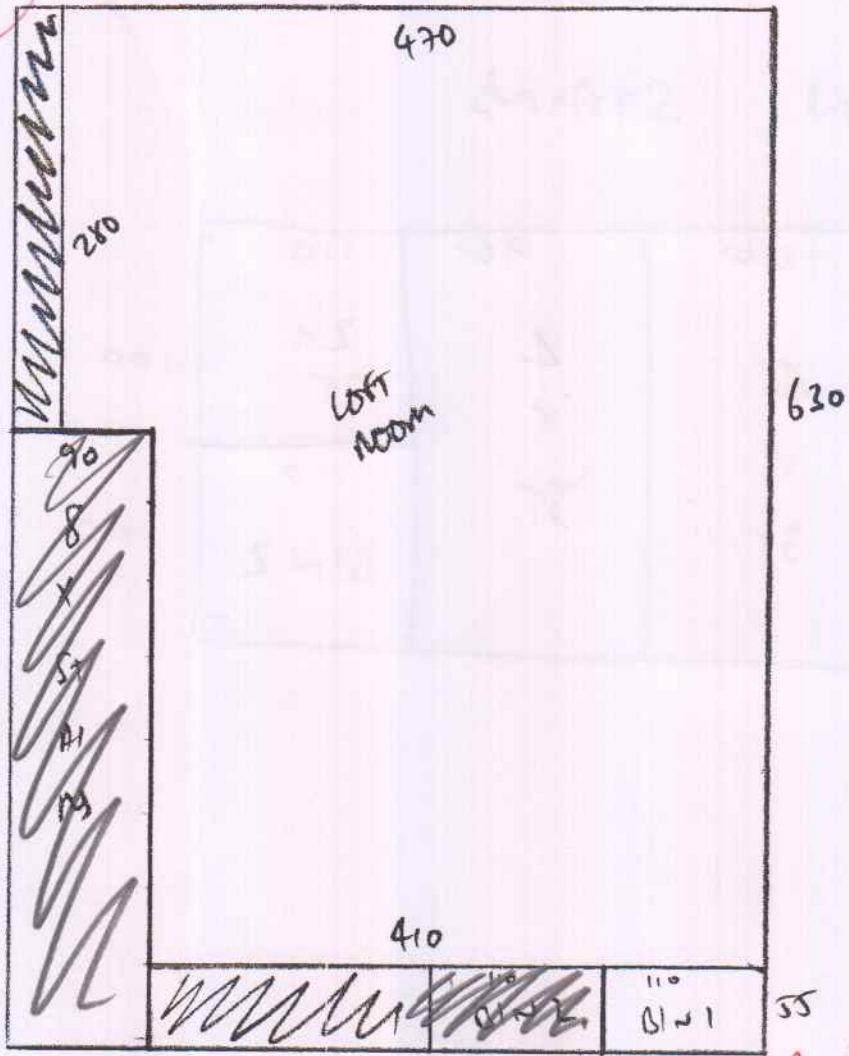


PHASE 2
 EIC/MAN
 +
 EIC/WHY
 +
 RUMENON
 +
 HTRD



(B)

PHASE 2



CUTS

(A) = 1210 x 500

(B) = 685 x 500

~~320 x 5 m~~

VINYLS

BATHROOM = 205 x 200

W.C. = 140 x 200

200 x 400

MAIN STAIRS

