

S31683
NICOL

- A PLAN ① 10.40 x 5m ●
- A PLAN ② 6.00 x 5m ●
- A PLAN ③ 5.40 x 5m ●
- B PLAN ④ 6.70 x 5m ●
- B PLAN ⑤ 5.20 x 5m ●
- A TOP LAND (PHASE 2) 1.60 x 5m ●
- A BED 5 (PHASE 1) 3.35 x 5m ●
- B PLAN ⑥ 2.55 x 5m ●

- SPLIT DEL 5.20 ●
- SPLIT DEL 5.40 ●
- SPLIT DEL 6.70 ●

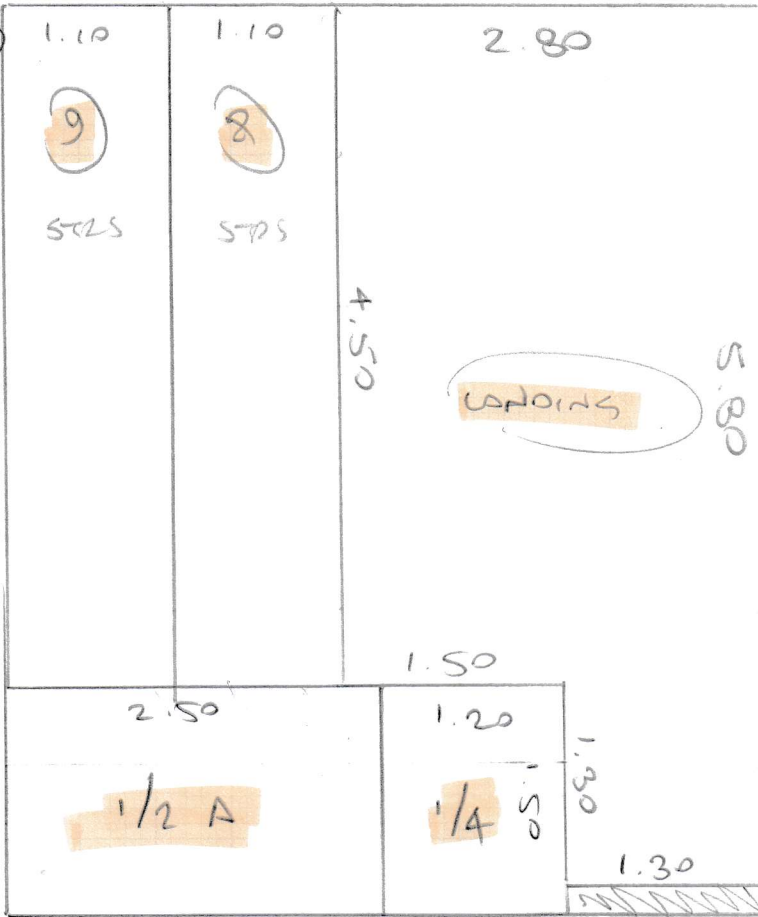
A = LEATHER TWIST (BROWN)

B = WTLAND (BLUE)

PHASE 1 = 13TH JULY

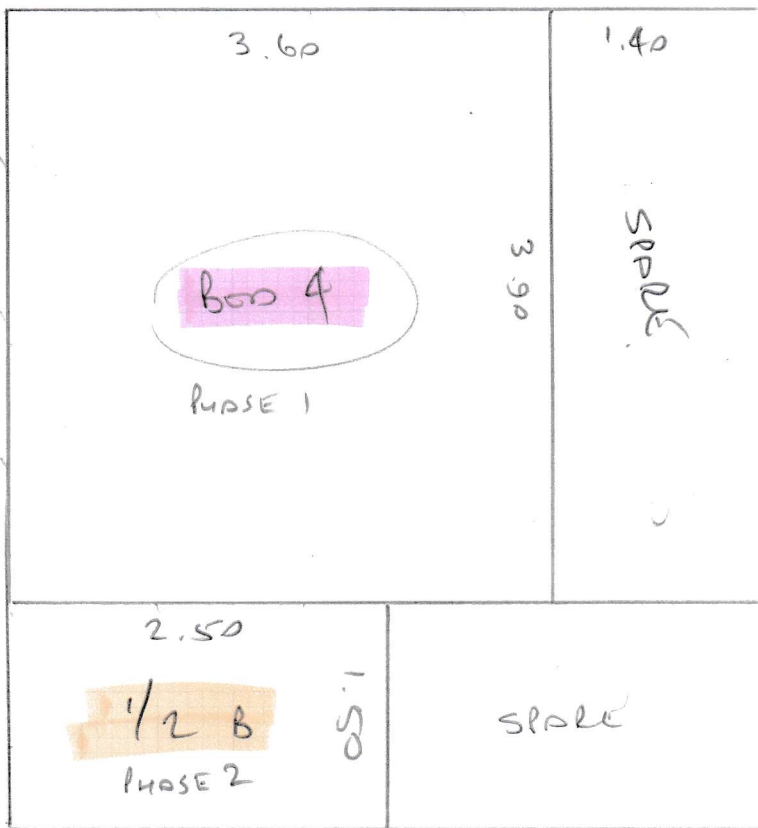
PHASE 2 = 17TH JULY

2



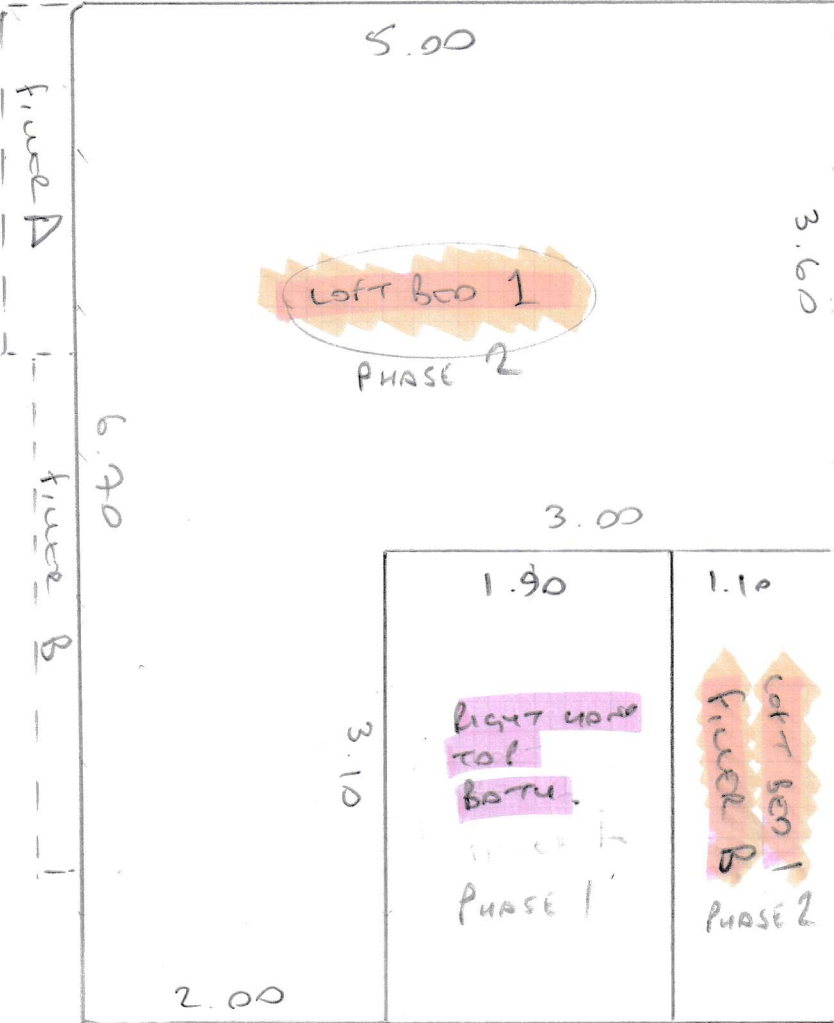
S31683
NICOL

3

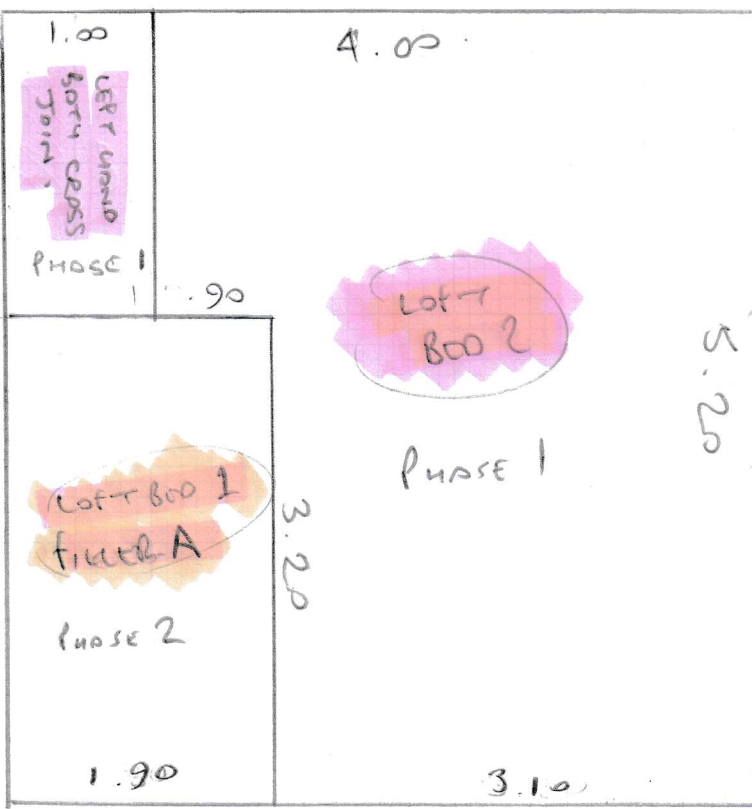


S31683
NICOL

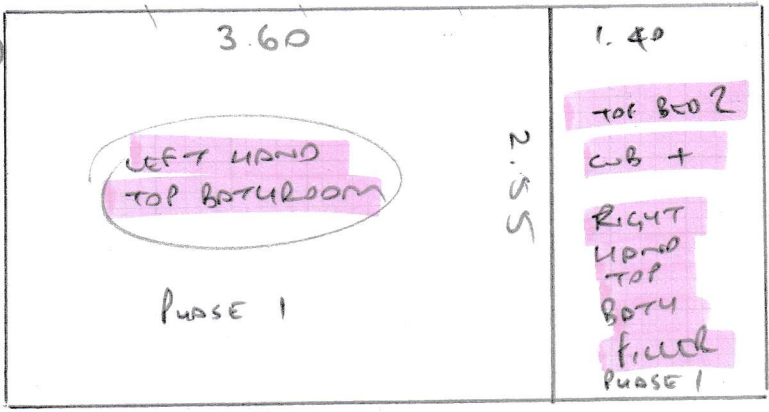
4



5



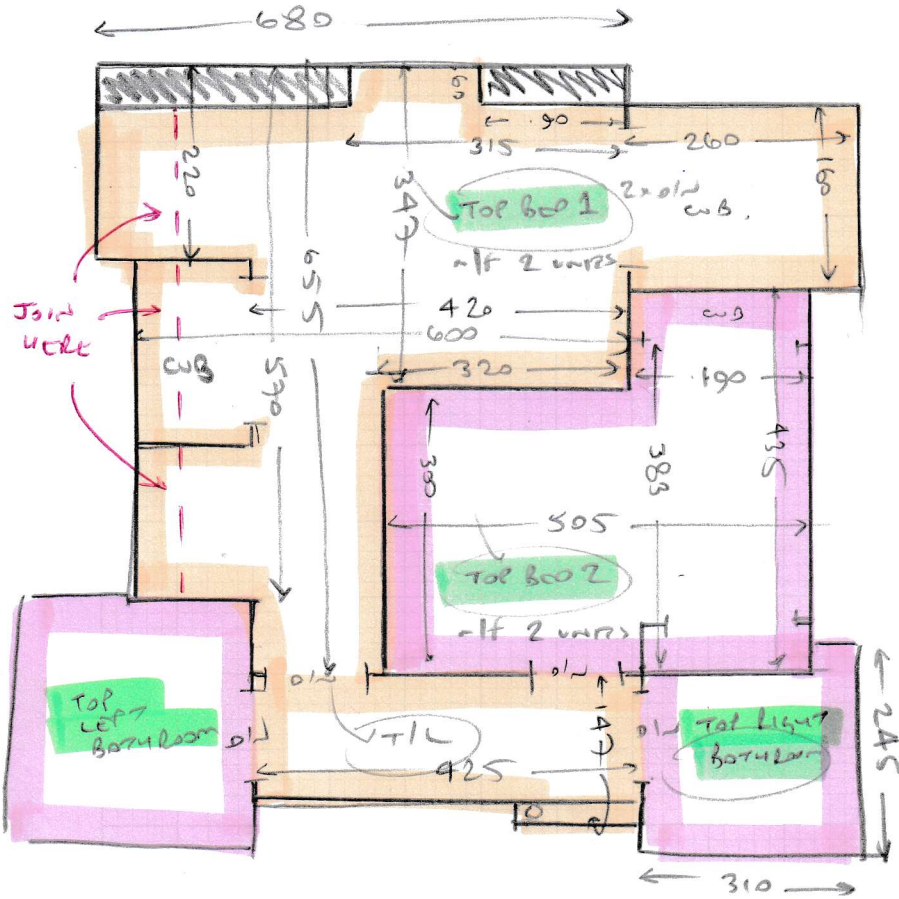
6



S31683
NICOL

S31683
NICOL

TOP FLOOR



TOP STAIRS

- ✓ 5 e 43 99
- ✓ 1/2A 123 240
- ✓ 10 e 43 99

MAIN STAIRS

- ✓ 4 e 45 99
- ✓ 1/2B 140 233
- ✓ 10 e 44 100
- ✓ 1/4 147 110
- ✓ 2 e 45 110

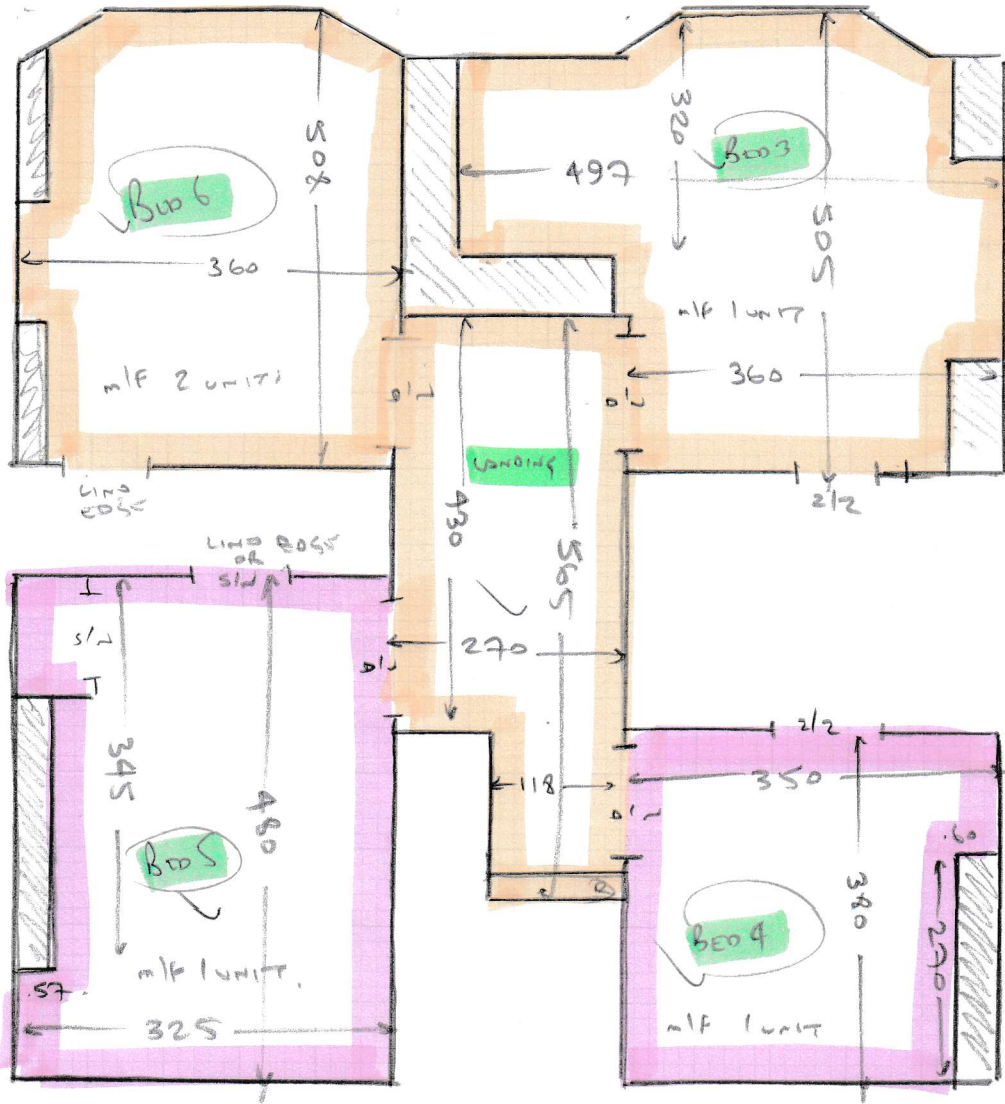
TURN SIDES ON EXPOSED EDGES OF BIN AS PER EX CPT.

- WOOD FLOORS
- old CPTS
- EX SLE
- mlf SEE ROOMS

PHASE 1 = 13TH JULY

PHASE 2 = 17TH JULY

S31683
NICOL



PHASE 1 = 13TH JULY

PHASE 2 = 17TH JULY

- WOOD FLOORS
- OLD CPTS
- EX S/E
- m/f SEE ROOMS

S31683
Nicol

LEFT HAND TOP BATHROOM

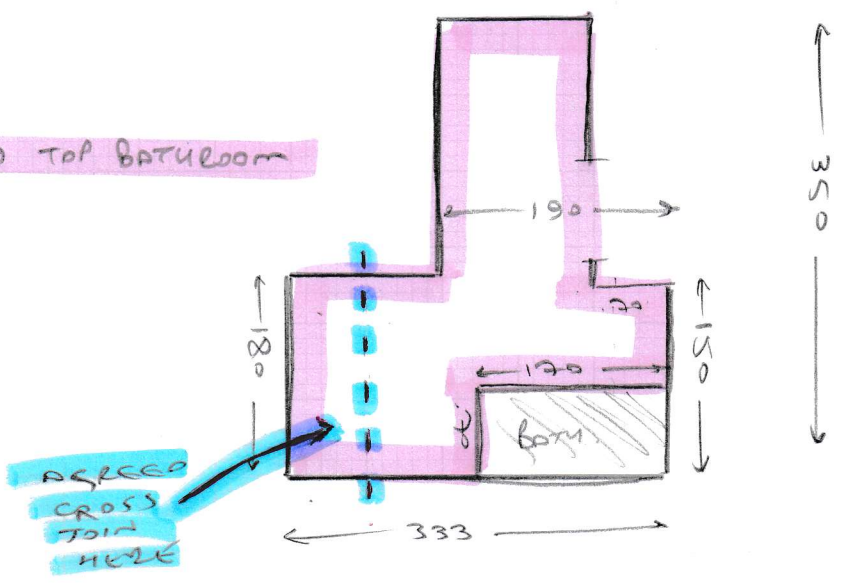


FIGURE 1101

RIGHT HAND TOP BATHROOM

