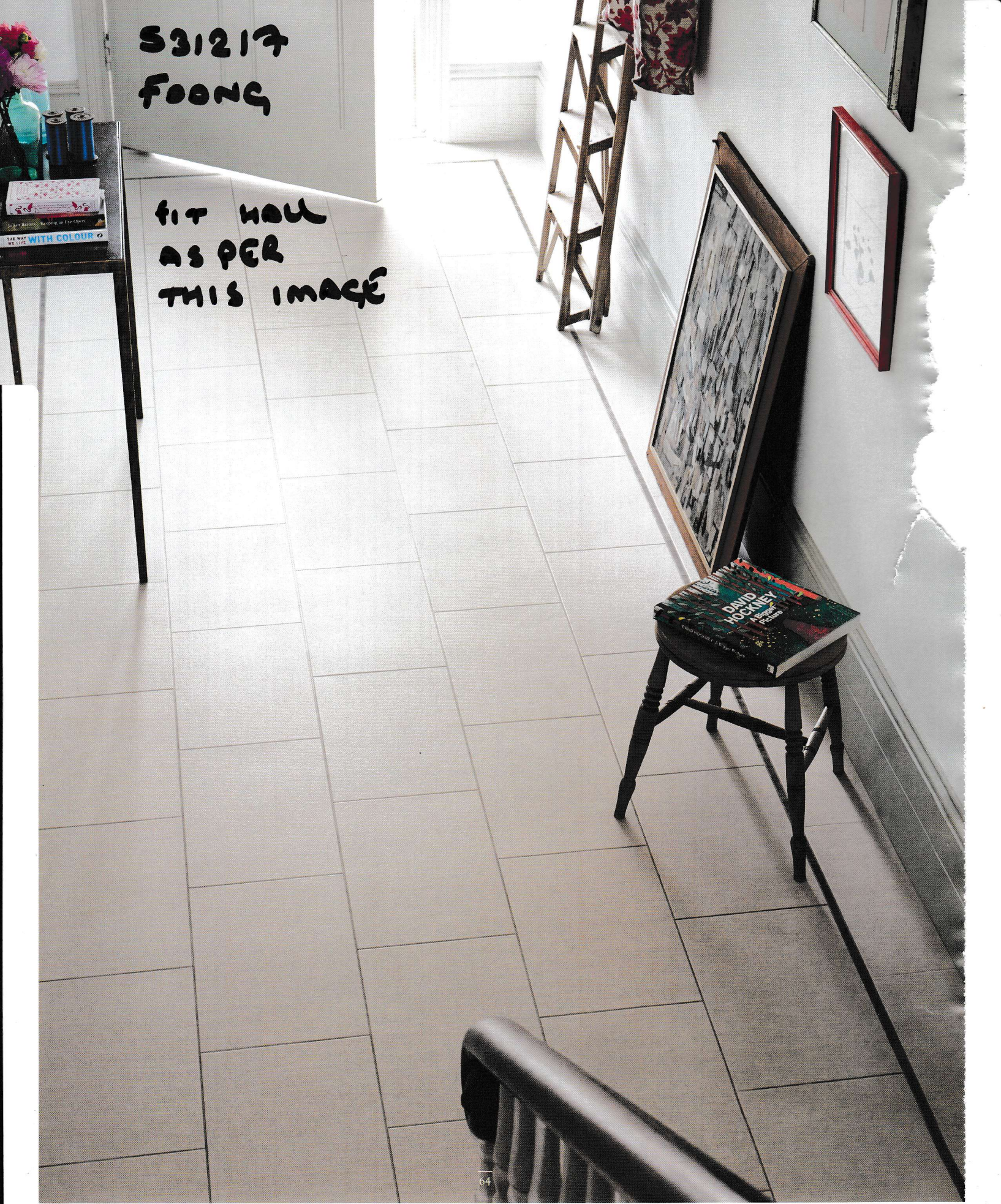
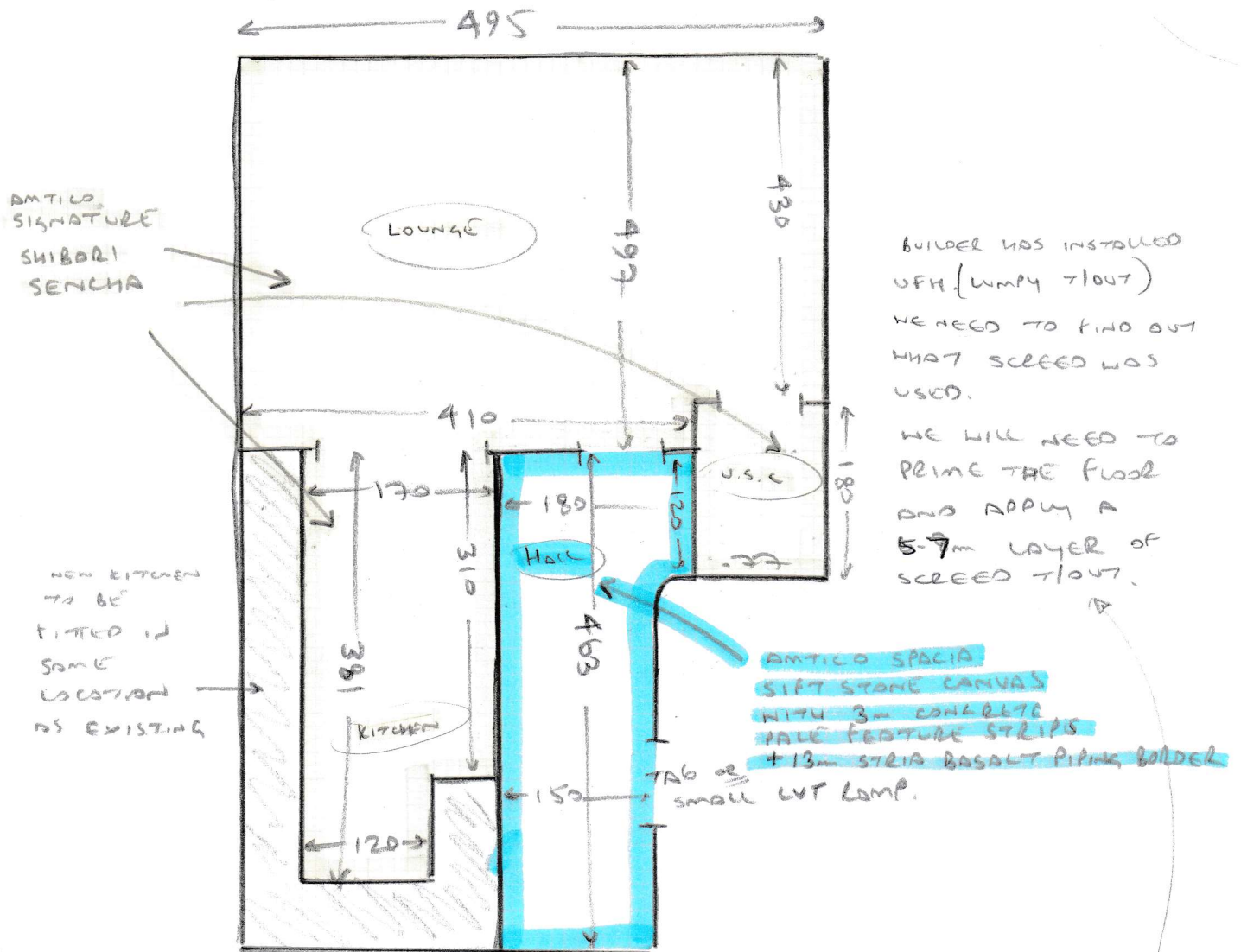


S31217
FOONG

FIT HALL
AS PER
THIS IMAGE



S31217
FOONG



BUILDER HAS INSTALLED U.F.H (LUMPY TROUT) WE NEED TO FIND OUT WHAT SCREED WAS USED. WE WILL NEED TO PRIME THE FLOOR AND APPLY A 5-7m LAYER OF SCREED TROUT.

ANTICO SPACIA
SIFT STONE CANVAS
WITH 3m CONCRETE
PALE FEATURE STRIPS
+ 13m STRIA BASALT PIPING BORDER
TAB or small CRT LAMP.

FROM BACK

- ALL AREAS
- CONE FLOORS
 - OLD CRT + VINYL
 - NEEDS SCREED
 - NO M/F.

NETT AREAS: Full Plank

LOUNGE	24.60	} 32.45m ²
KITCHEN	6.46	
U.S.C	1.39	

NETT AREAS: PARQUET

Hall 7.31