

S31683  
NICOL

- A PLAN ①  $10.40 \times 5_m$  ●
- A PLAN ②  $6.00 \times 5_m$  ●
- A PLAN ③  $5.40 \times 5_m$  ●
- B PLAN ④  $6.70 \times 5_m$  ●
- B PLAN ⑤  $5.20 \times 5_m$  ●
- A TOP LAND (PHASE 2)  $1.60 \times 5_m$  ●
- A BED 5 (PHASE 1)  $3.35 \times 5_m$  ●
- B PLAN ⑥  $2.55 \times 5_m$  ●

SPLIT DEL 5.20 ●

SPLIT DEL 5.40 ●

SPLIT DEL 6.70 ●

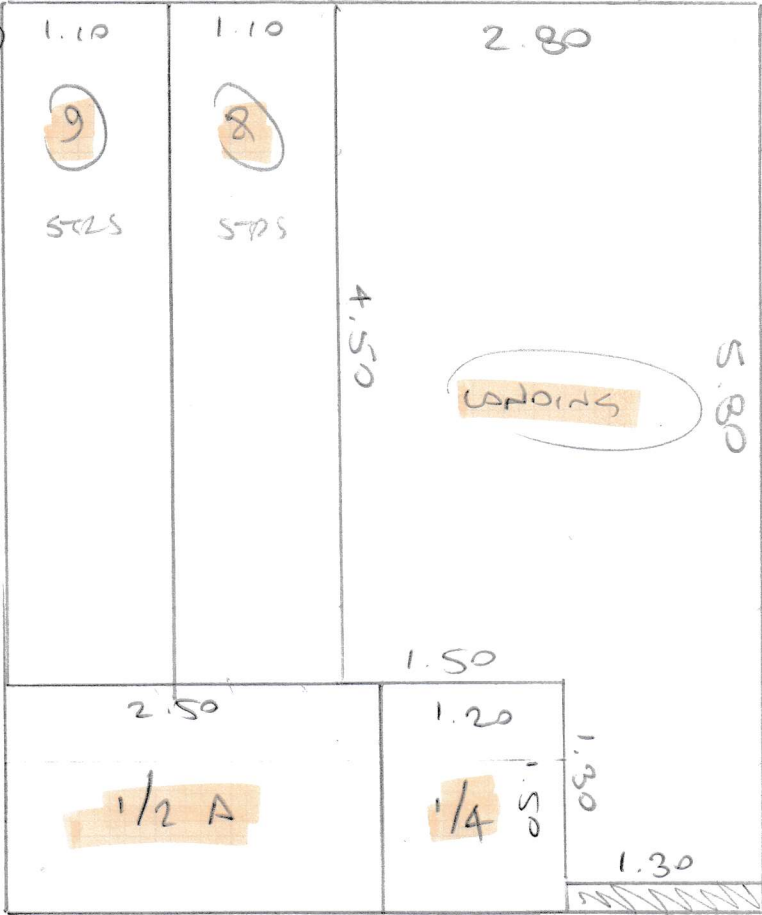
A = LEATHER TWIST (BROWN)

B = WTLAND (BLUE)

PHASE 1 = 13<sup>th</sup> JULY

PHASE 2 = 17<sup>th</sup> JULY

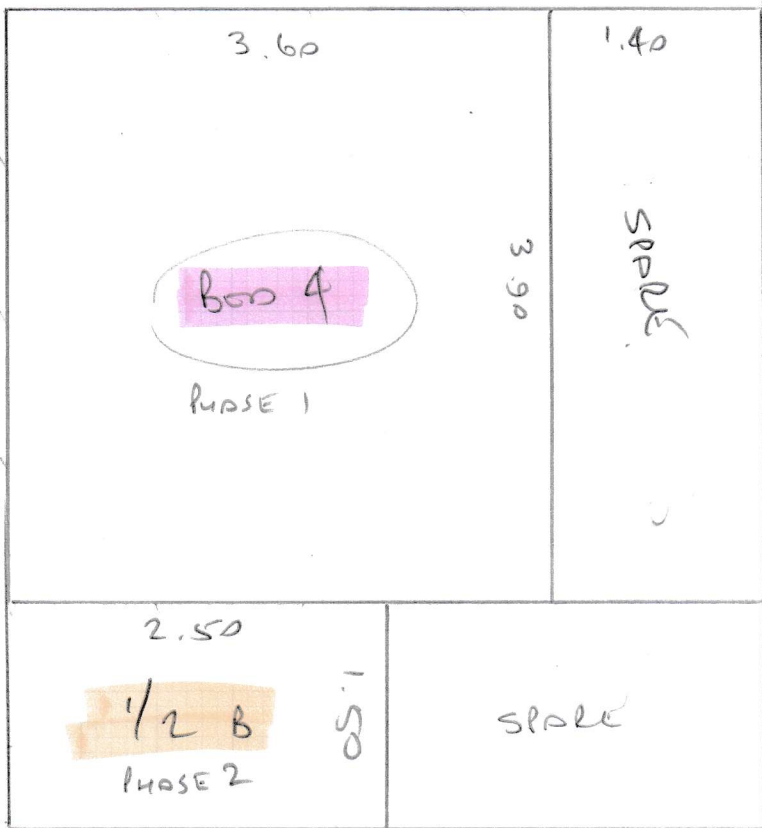
2



S31683  
NICOL

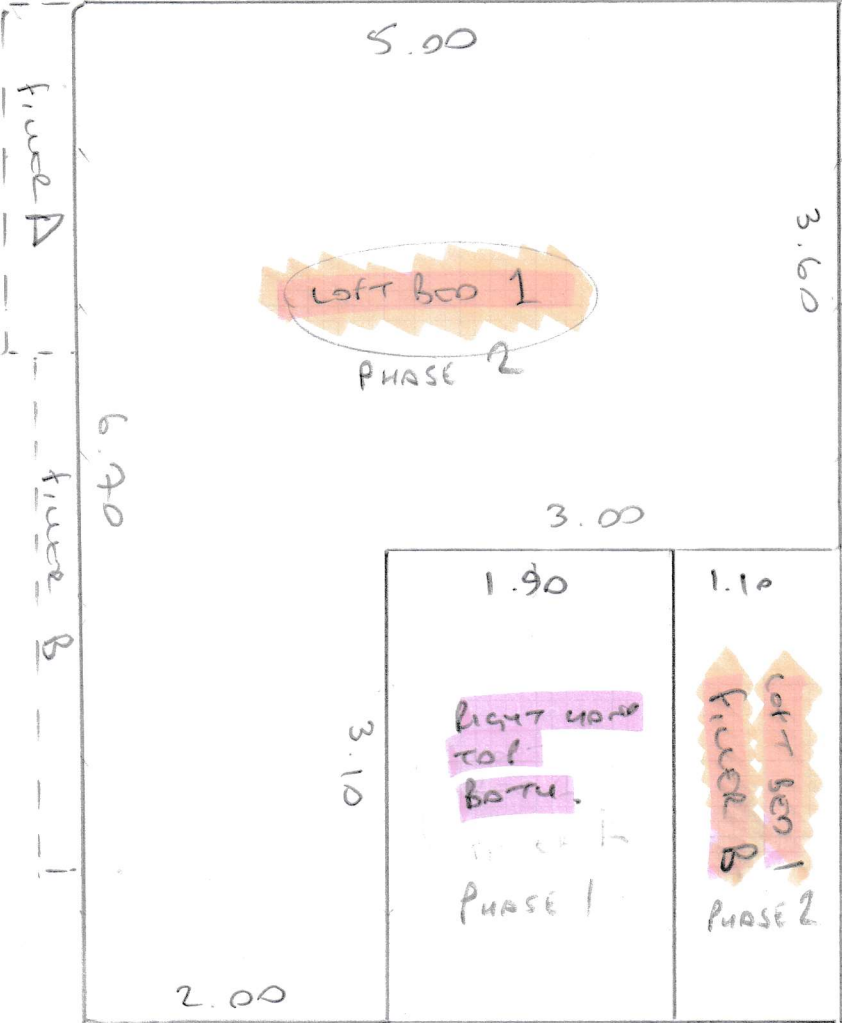
← ALL PHASE 2

3

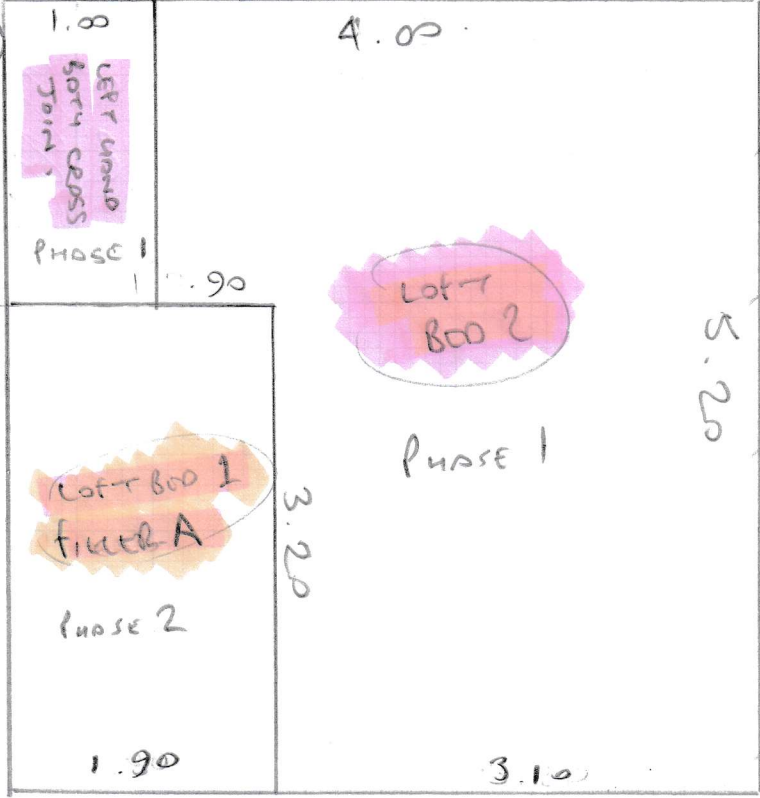


S31683  
NICOL

4



5



6

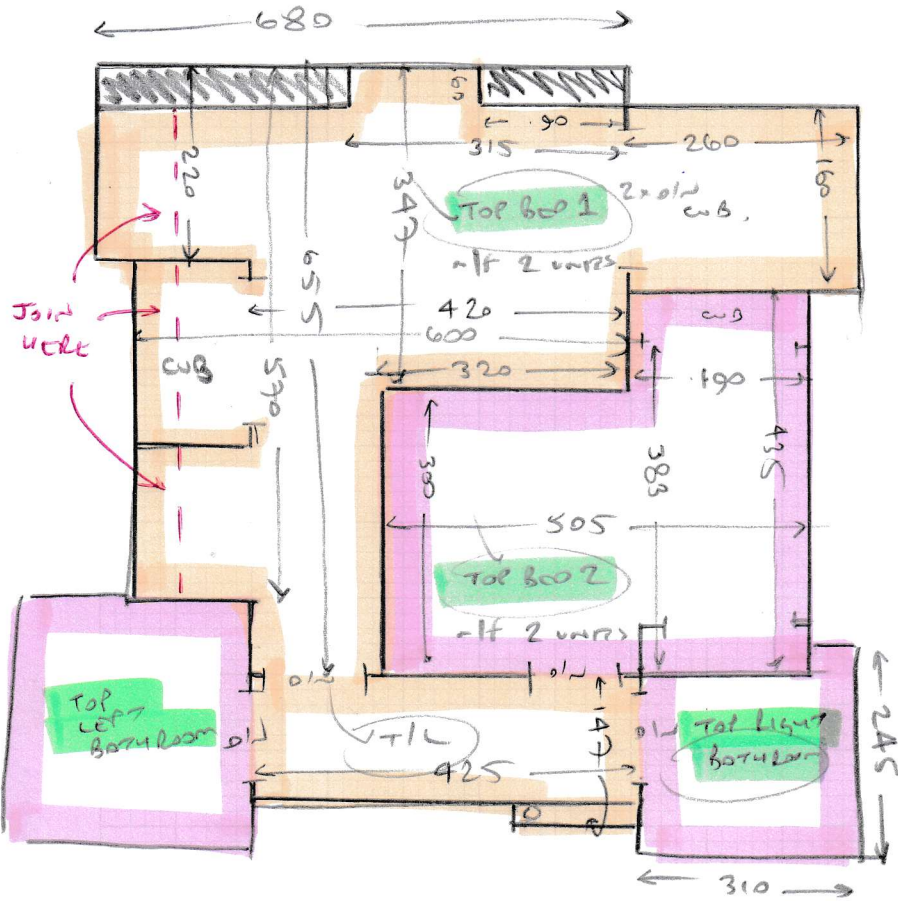
<p>3.60</p> <p>LEFT HAND TOP BATHROOM</p> <p>PHASE 1</p>	<p>1.40</p> <p>TOP BED 2</p> <p>CUB +</p> <p>RIGHT HAND TOP BOTH FIELD PHASE 1</p>
--	--

N  
S

S31623  
NICOL

S31683  
NICOL

TOP FLOOR



TOP STAIRS

- ✓ 5 e 43 99
- ✓ 1/2A 123 240
- ✓ 10 e 43 99

MAIN STAIRS

- ✓ 4 e 45 99
- ✓ 1/2B 140 233
- ✓ 10 e 44 100
- ✓ 1/4 147 110
- ✓ 2 e 45 110

TURN SIDES ON EXPOSED EDGES OF BIN AS PER EX CPT.

- WOOD FLOORS
- vlt cpts
- ex slt
- m/f SEE ROOMS

PHASE 1 = 13<sup>th</sup> July

PHASE 2 = 17<sup>th</sup> July



S31683  
Nicol

LEFT HAND TOP BATHROOM

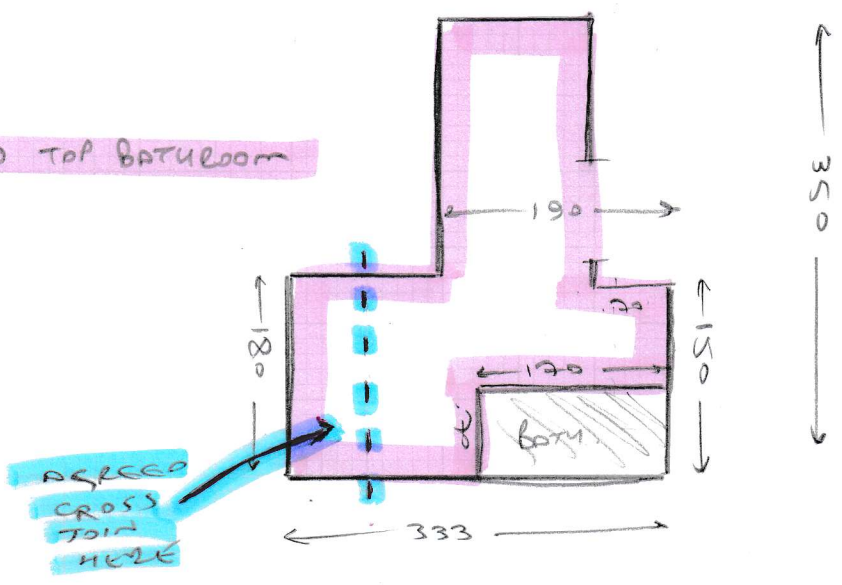
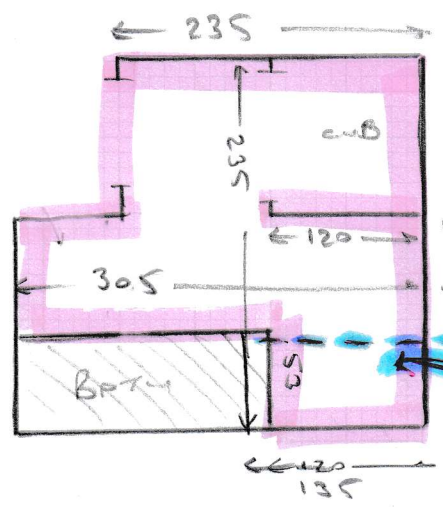


Figure 1101



RIGHT HAND TOP BATHROOM

cross join here