

$1.5 \text{ STMS} = 44 \times 73'$
 $W1 = 53 \times 81'$
 $W2 = 56 \times 104'$
 $W3 = 55 \times 105'$
 $W4 = 55 \times 74'$

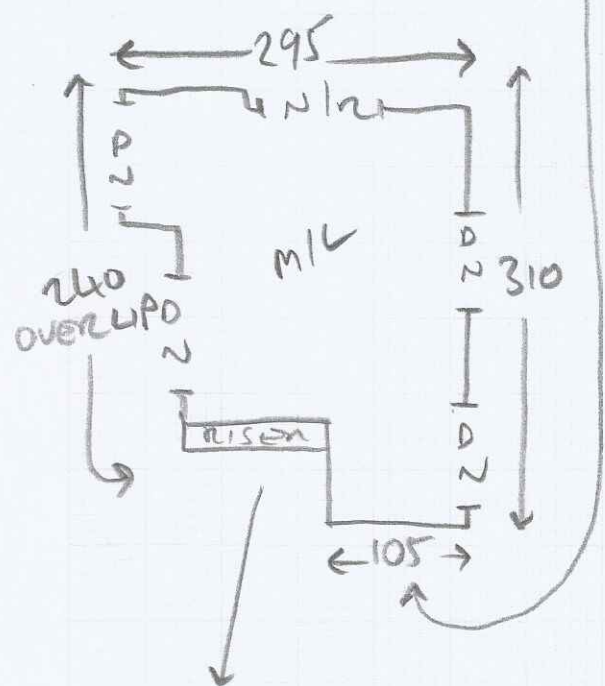
10
 cm
 EITHER
 SIDE

$W5 = 53 \times 81'$
 $W6 = 57 \times 104'$
 $W7 = 54 \times 104'$
 $W8 = 54 \times 74'$
 $3 \times \text{STMS} = 44 \times 74'$

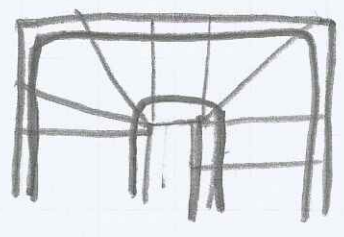
10
 cm
 EITHER
 SIDE

$1 \times \text{STEP} = 44 \times 74'$

TEMP ALL WINDOWS ON SITE.



WANTS CONSISTENT
 GAP ON WINDOWS
 EXIST BARS



$7.5 \times \text{STMS} = 44 \times 84'$

$1/4 \text{ (A)} = 109 \text{ or } 86'$

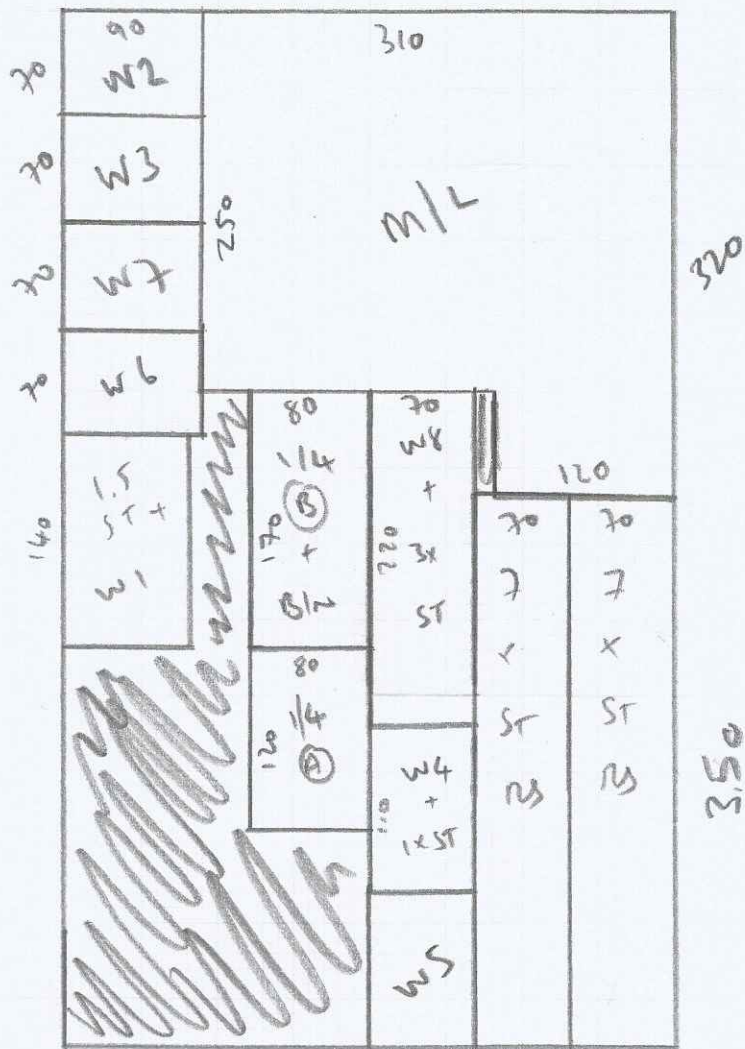
$5 \times \text{STMS} = 43 \times 85'$

$1/4 \text{ (B)} = 110 \text{ or } 86'$

$B1N = 42 \times 80'$

TEMP ON 12 cm
 SITE EITHER SIDE

IS ACT WIDER BUT
 SIZED FOR WINDOW



6.70 x 4m

LEAVE WASTE ON SITE.

(CARPET WAS A REM SO WASTE IS INEVITABLE)