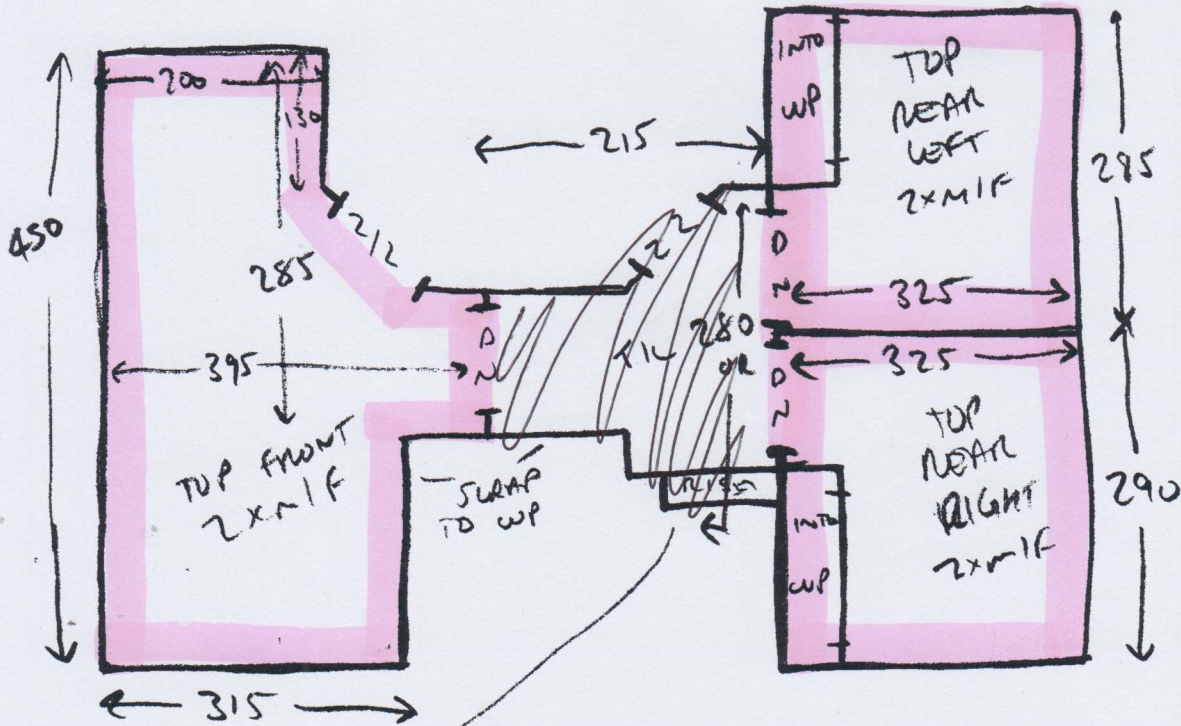


17/3/23 = 3x TOP ROOMS +  
TEMPLATE RUNNER

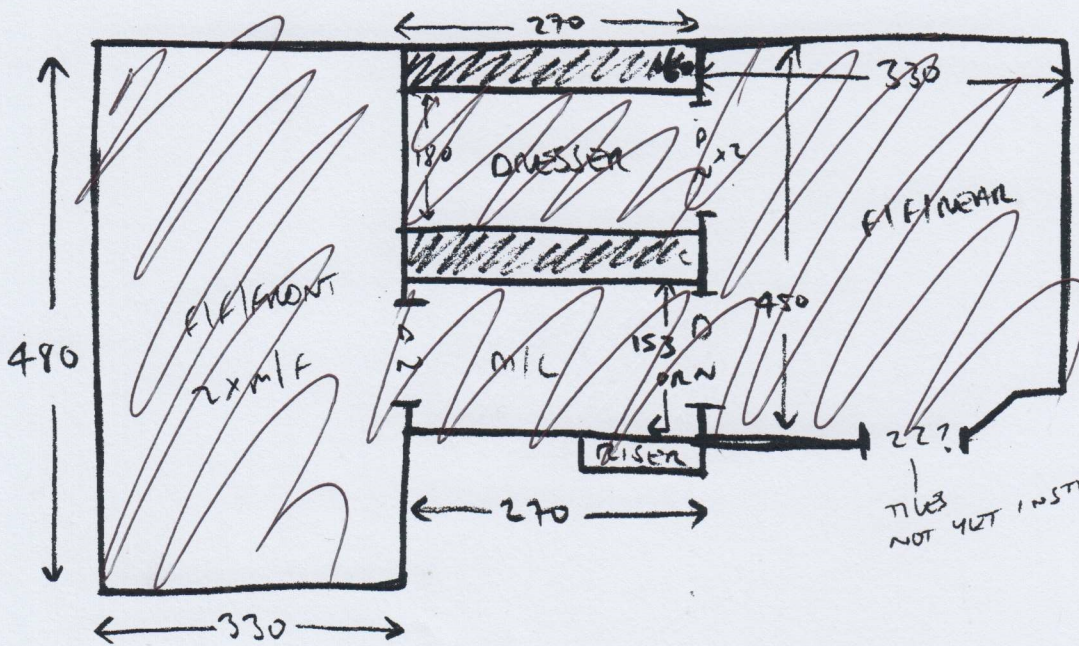
533769



~~2x ST = 44x82 -  
W1 = 56x91 -  
W2 = 60x115 -  
W3 = 60x110 -~~

~~W4 = 53x82 -  
2x ST = 44x82 -  
W5 = 56x90 -  
W6 = 60x113 -~~

~~W7 = 60x118 -  
W8 = 65x82 -  
2x ST = 43x82 -  
↓ TO MIL ↓~~



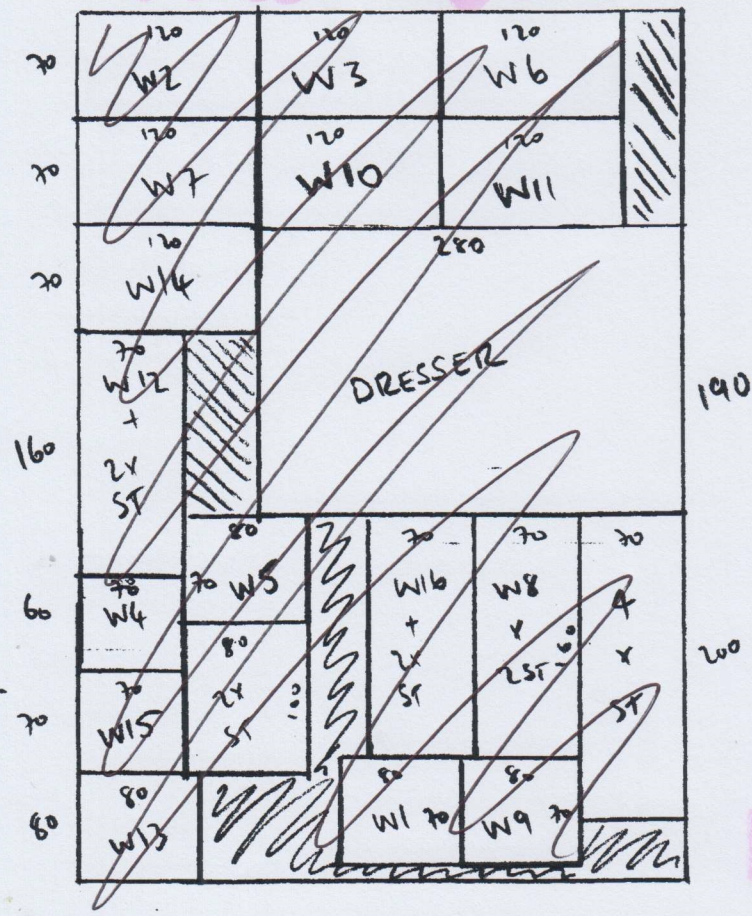
~~2x ST = 43x82 -  
W9 = 57x91 -  
W10 = 60x115 -  
W11 = 60x115 -~~

~~W12 = 54x82 -  
2x ST = 44x82 -  
W13 = 57x90 -  
W14 = 60x114 -~~

~~W15 = 62x82 -  
W16 = 68x82 -  
1x ST = 43x82 -  
BIN = 41x120 -~~

17/3/23 - 3x TOP ROOMS  
+ TEMPLATE RUNNER

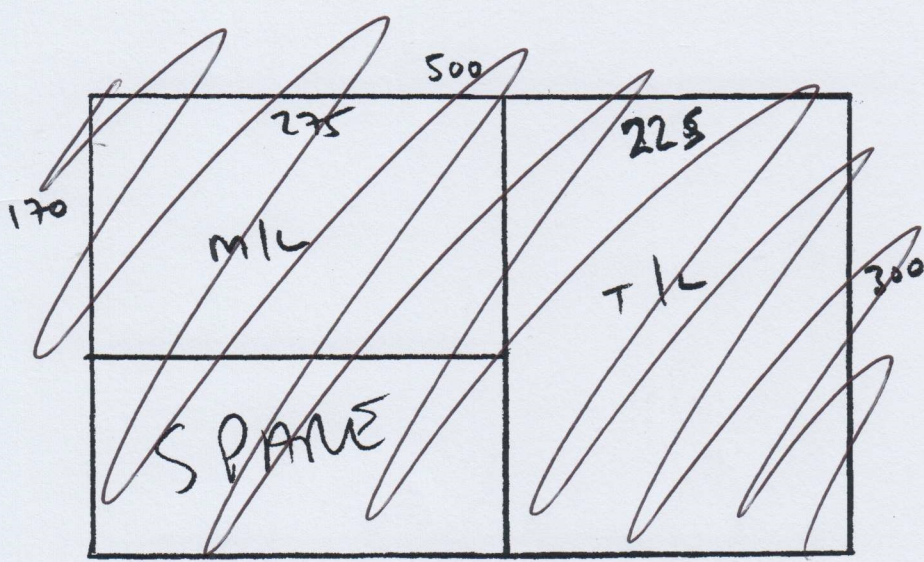
533769



OPTION 1

~~580 x 400  
STMS AS RUNNER  
+ DRESSER~~

**TAKE ALL  
STMS TO SITE  
TO TEMPLATE**



OPTION 1

PLAN  
REX

WPTS  
PLAN = ~~300 x 500~~  
R/L/F = ~~340 x 500~~  
R/R/F = ~~340 x 500~~  
**T/F/FRONT = 410 x 500**  
1700 x 500

**T/R/LEFT = 300 x 400**  
**T/R/RIGHT = 300 x 400**  
~~24m<sup>2</sup> 600 x 400~~