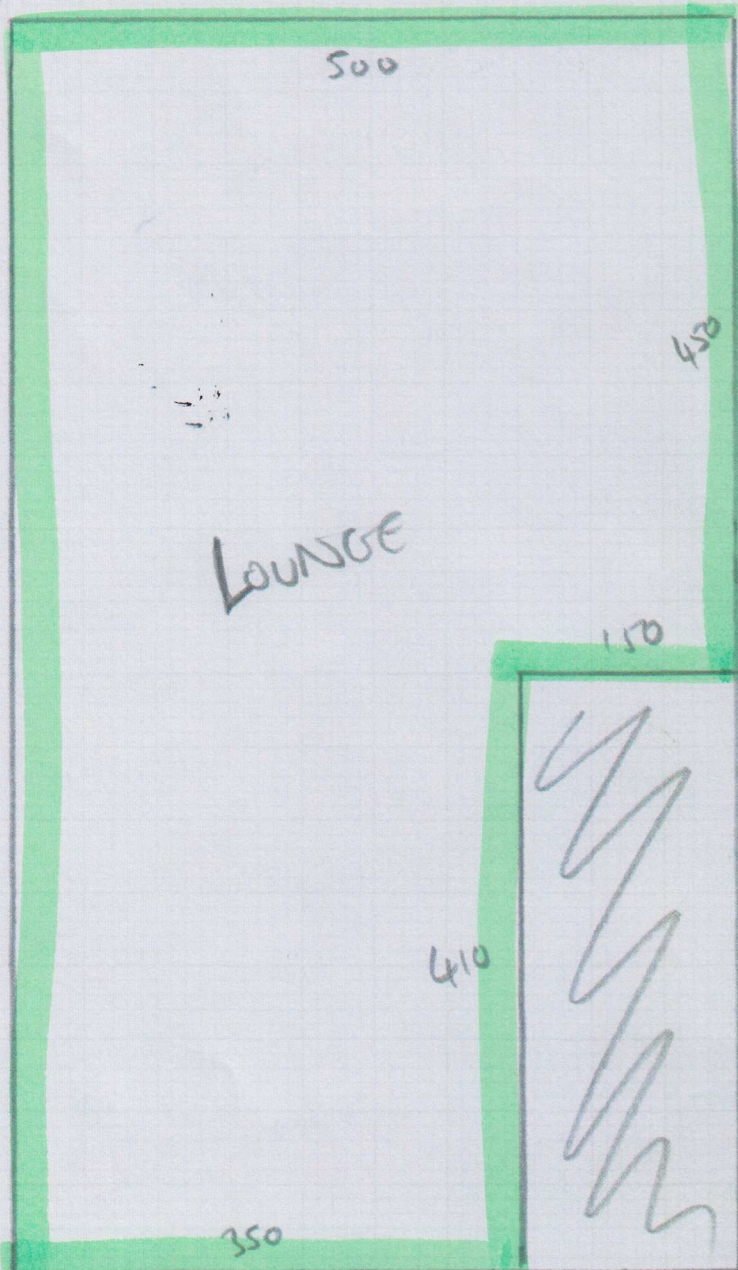


(A)



LOUNGE

TOP
NEAR

533806
Kim Paris Interior

1 of 7

GALA RAIN

-FIELD STONE 91

Cur Plan (A) = 860 x 500

Cur Plan (B) = 310 x 500

Cur Plan (C) = 300 x 500

Cur Plan (D) = 310 x 500

Top front Bed = 450 x 500

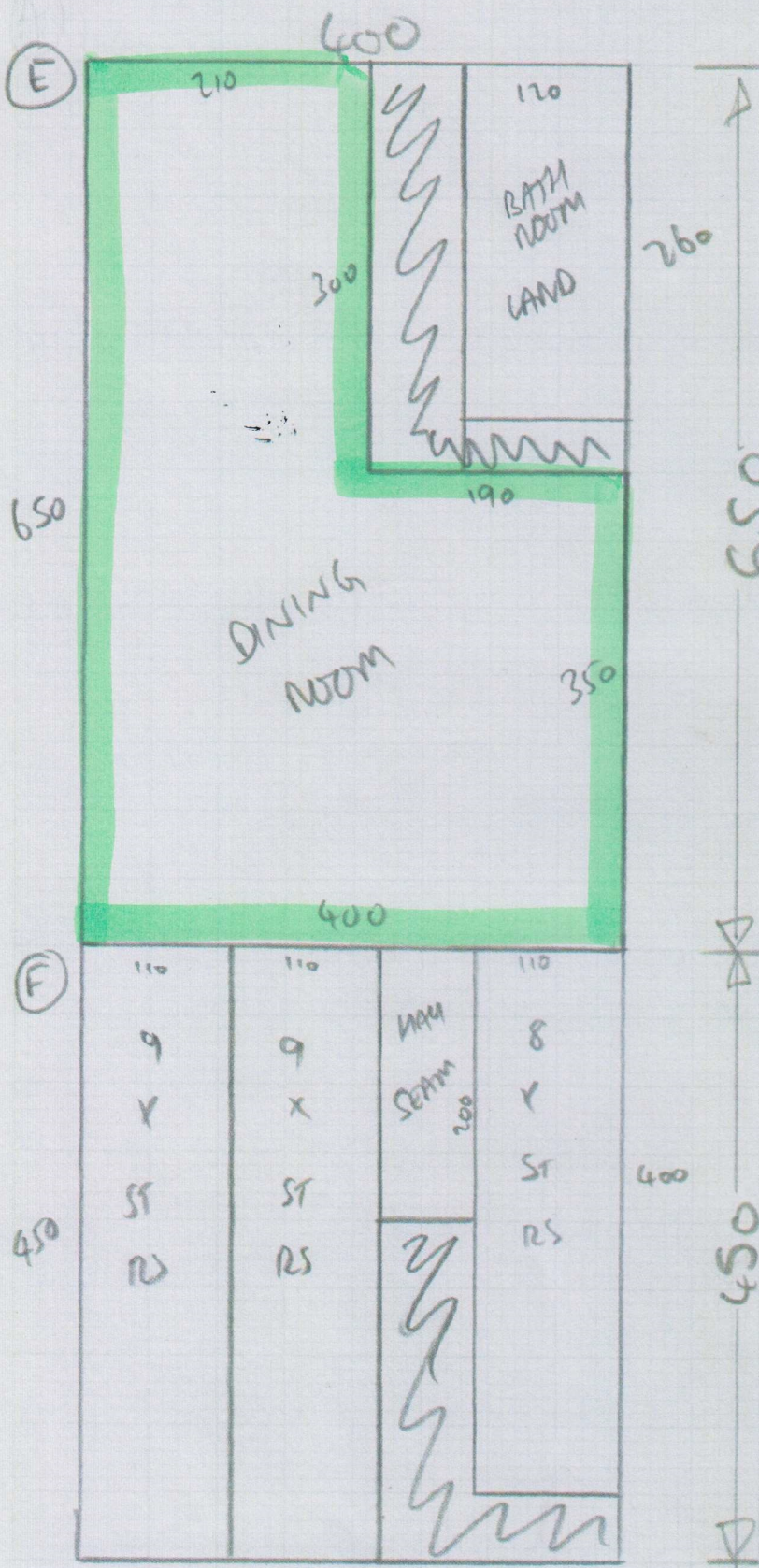
Top front Bed = 440 x 500

Basement Lounge = 435 x 500

*

35 x 5m
SEE ROLL
BREAKDOWN

* BASEMENT
BED +
BASEMENT
LOUNGE
AT LATER DATE



S33806
Kimpanis Interiors

2 of 7

CARTRIDGE

- GREY LINES 890

Ⓔ = 650 × 400

Ⓕ = 450 × 400

Ⓖ = 990 × 400

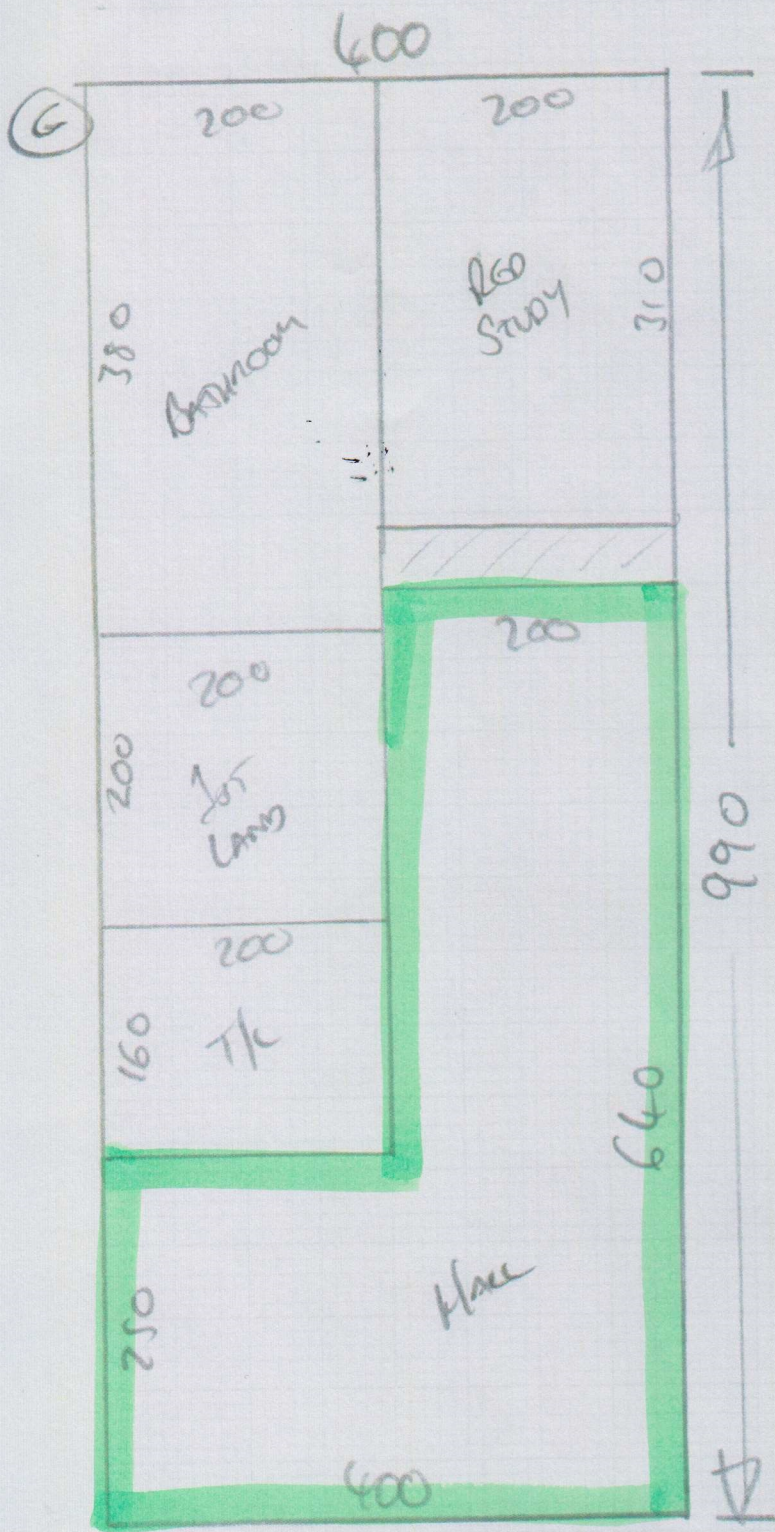
Ⓗ = 360 × 400

Ⓘ = 670 × 400

2920 × 400

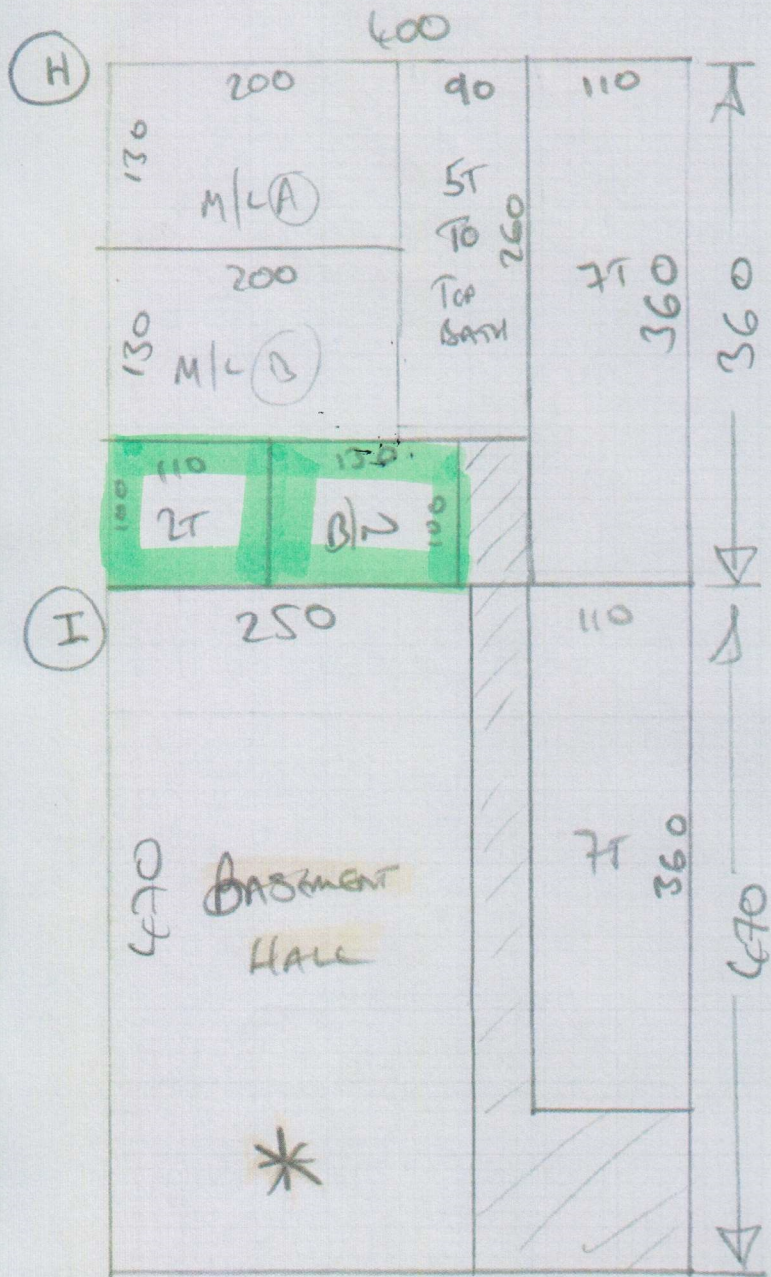
18.85, 6.50,
+ 4.70

SEE ROW
BREAKDOWN



S33806
Kim Park Interiors

3 of 7



S33806
Vin Paris Interiors

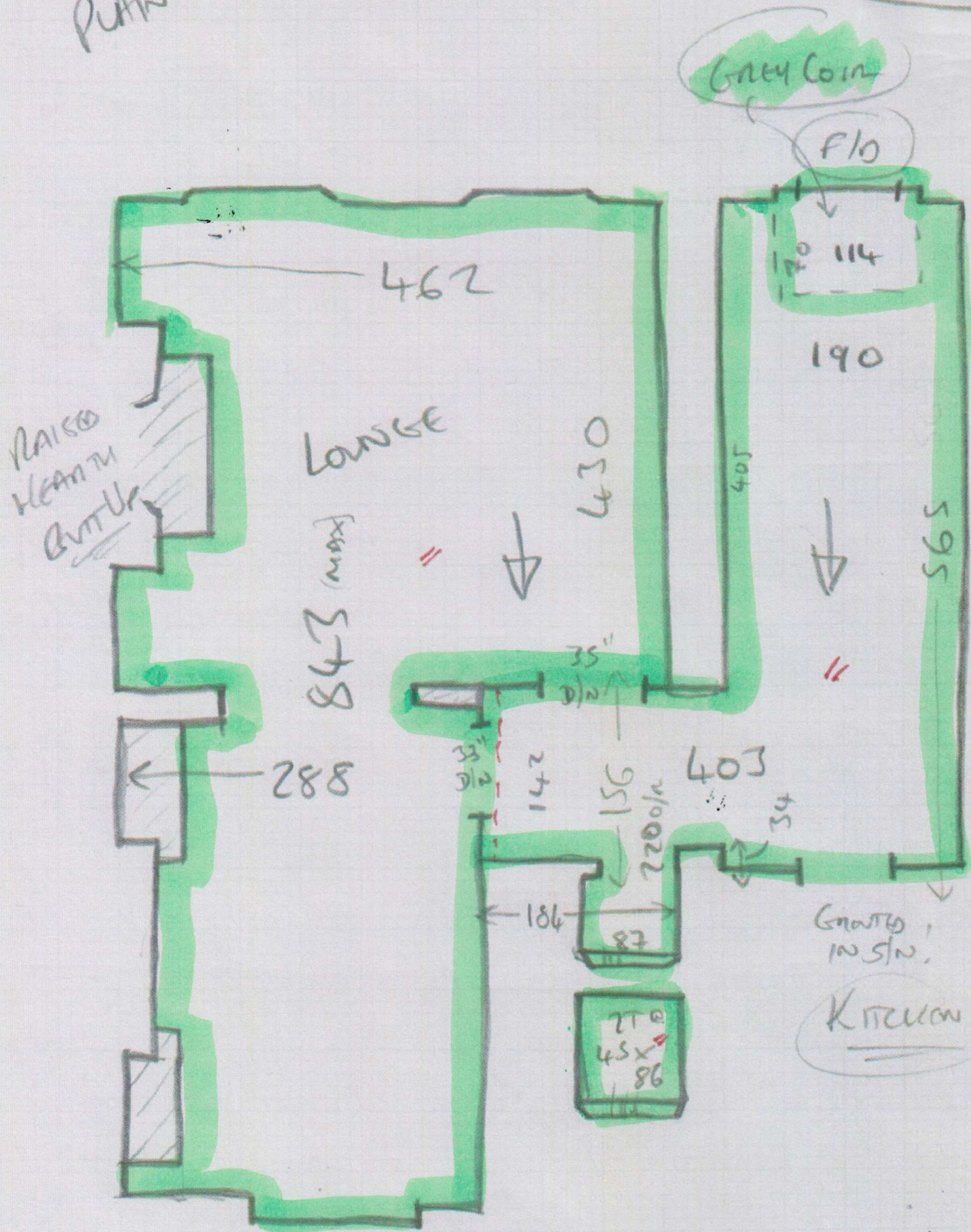
407

* LATER DATE — MARK UP & STONE AT WAREHOUSE

OPTION 1
 STRIKE - HALL + STND
 PLAN - ROOM

533806
 KIM HALL INTERIOR

5 of 7



S33806
Kim Paris Interiors

6 of 7

OPTION
1
STRIPES

