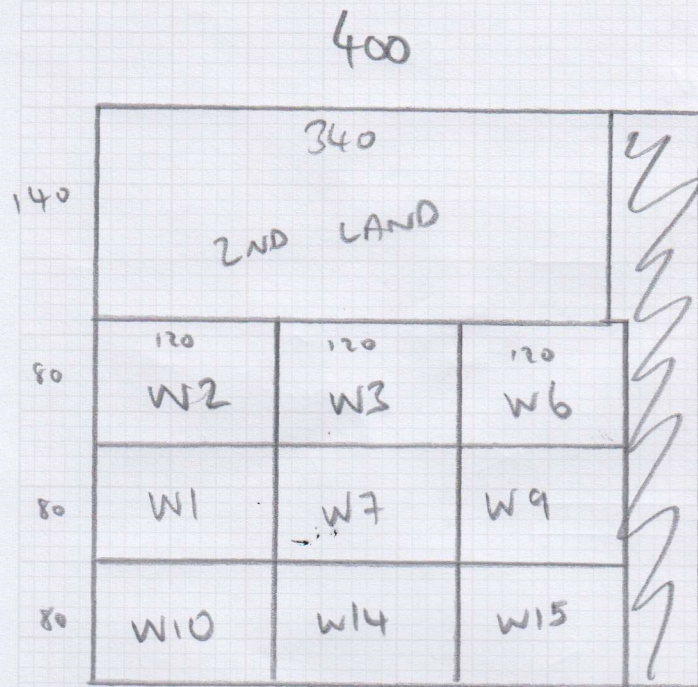


(A)



Job No: 535292

Name:

Address: 2/2

Tel:

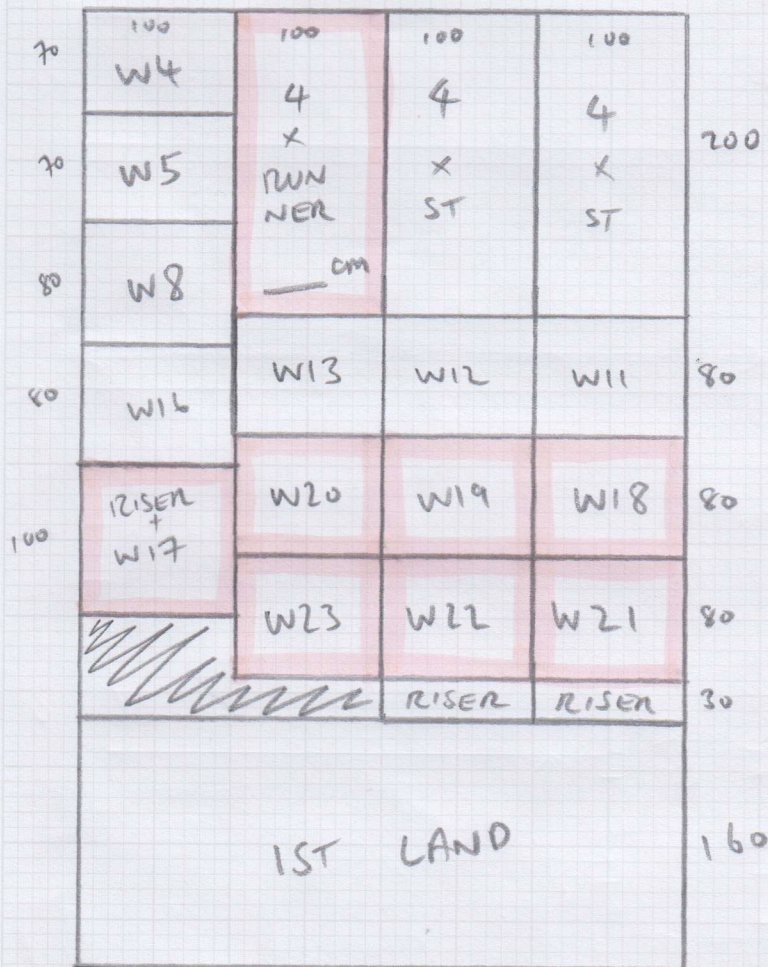
Sheet: of:

ALPINE FRAMED  
LIGHT (S+LANDS)

(A) = 380 x 400

(B) = 630 x 400

(B)



LYME PARK  
CORBUE (BEDS)

REAR = 410 x 500

FRONT = 280 x 500

FRONT = 110 x 500

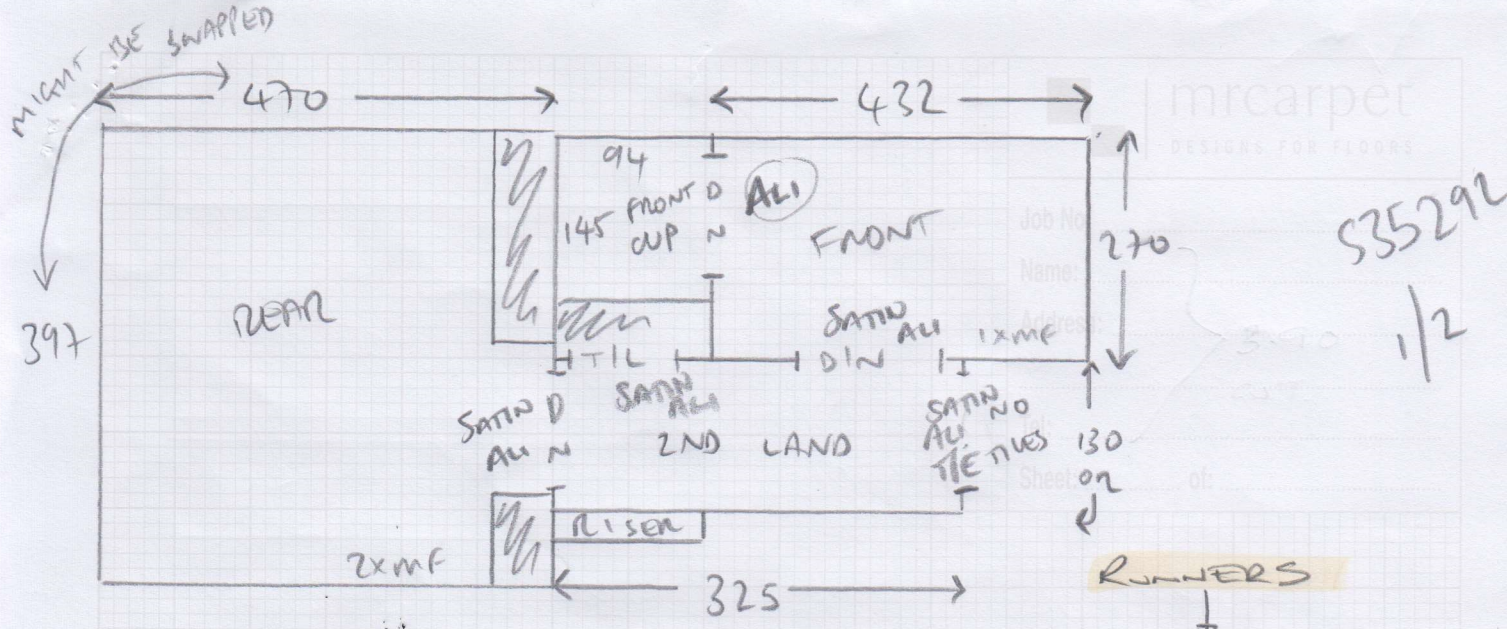
CUP

CUT TO 110 x 160

29/1 = FIT BEDS

30/1 + 31/1 = FIT ALL EXCEPT RUNNER  
(+ TEMPLATE RUNNER)

TBC - FIT FIRST FLIGHT RUNNER  
= RUNNER



EX 212  
→ 3RD STMS

2ND STMS

1ST STMS

- RISER = 25 x 89
- W1 = 63 x 97
- W2 = 71 x 111
- W3 = 65 x 114
- W4 = 54 x 88
- 4xST = 45 x 88
- W5 = 53 x 88
- W6 = 65 x 111
- W7 = 80 x 98
- W8 = 70 x 92

- RISER = 20 x 89
- W9 = 63 x 98
- W10 = 70 x 105
- W11 = 68 x 92
- W12 = 52 x 88
- 4xST = 45 x 88
- W13 = 52 x 89
- W14 = 65 x 108
- W15 = 73 x 100
- W16 = 70 x 87

- RISER = 20 x 89
- W17 = 65 x 98
- W18 = 69 x 108
- W19 = 64 x 95
- W20 = 52 x 89
- 4xST = 45 x 89
- W21 = 52 x 90
- W22 = 65 x 109
- W23 = 66 x 97

WIDTH + WINDER SHAPE TBC

- 3RD LAND TO BE WOOD. 212 ON RISER TO 3RD LAND CURRENTLY. TOLD CUSTOMER TO GET WOODEN THRESHOLDS

- 1ST STAIRS AS A RUNNER, WIDTH + WINDER SHAPE TBC

- 150 x 350 Approx.

- 1ST LAND INCLUDED - BUT NOT MEASURED @ TIME