



Customer:

Designer Carpets Ltd

Fitting address:

Collection

LONDON, SW17 0BA

Home 'phone Nr:    Mobile/other 'phone Nr:    Office 'phone Nr:  
07454-318618Collected from W/H  
on 12/5

Contact: Nigel

Instructions:

Comments re Fitting:

See cutting plans: See Chas for instructions, cutting plans &amp; fitting address

Product & Colour	Fitter's claim	Length/Quantity	Width
Coir Matting (Var.Cols.) 17mm - Black		1.90	
H/M 3 dimensions u'lay - N/A		15.00	
Smoothedge Wood Pin 5' Length - N/A		72.00	
Homemaker Low Tog Underlay - N/A		10.95	
Spray Adhesive - 1 Can - N/A		6.00	

+ 30 lengths of short pin 5' e @ W/H.  
left over from PALK street Job.

+ Bound Carpets (5 pieces)

MAIN STAIRS

⑤

65	125 W1	125 W13	150 W26	5
65	W2	W14	W27	5
65	W3	W15	W28	5
65	W4	W16	W29	65
65	W5	W18	W30	5
65	W6	W19	W31	5
65	W7	W20	W32	5
65	W8	W21	W33	65
65	W9	W22	W34	65
65	W10	W23	W17	70
65	W11	W24	W35	75
65	W12	Riser	Riser	25
65	W25	275 W36		80

845

845

W12763

Accuro

The oaks

1 of 2

Annabelle III

Col. 844 Blue

Cut Plan ⑤ 845 x 400  
= 33.80m<sup>2</sup>

u/Lay = 25m<sup>2</sup>

~~STAIRS up to Master Dressing Room~~

⑥

100	150	150	85
180 2T DIR	W2 DIR	W5 DIR	
155 2T + Riser DIR	95 3T DIR	110 W1 DIR	95 W3 DIR
	170	W4 DIR	W6 DIR

255

255

~~Annabelle III~~

~~Col. 844 Blue~~

~~Cut Plan ⑥ 255 x 400  
= 10.20m<sup>2</sup>~~

\* Tight Plan - use straight edge to Cut down

Already fitted

u/Lay = 9m<sup>2</sup>

\* Check measured 16/4.

MAIN STAIRCASE

Upper flight

Riser 17x102  
W1 57x102  
W2 57x102  
W3 58x102  
W4 57x102  
W5 58x102  
W6 58x102  
W7 58x102  
W8 58x102  
W9 58x102  
W10 58x102  
W11 58x102  
W12 58x102  
W13 58x102  
W14 58x102  
W15 58x98  
W16 57x100  
W17 59x107

Lower flight

Riser 15x102  
W18 58x102  
W19 58x102  
W20 58x102  
W21 58x102  
W22 58x102  
W23 58x102  
W24 58x102  
W25 57x102  
W26 57x102  
W27 57x102  
W28 58x102  
W29 58x102  
W30 58x102  
W31 57x102  
W32 56x98  
W33 56x101  
W34 57x112  
W35 60x133  
W36 62x165

W12763

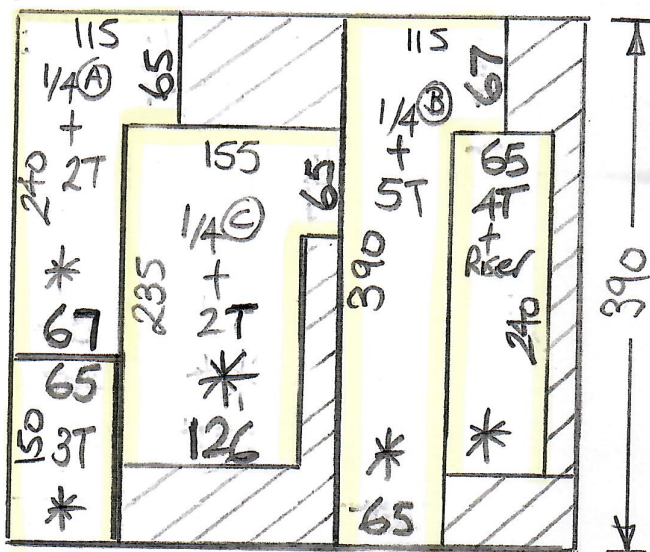
Accuro

The oaks

20/2

\* Winders are numbered from the top down \*

BASEMENT STAIRS



W12771  
Accuro  
The OAKS

1 of 2

AFC Anywhere Boucle  
Col. Ice 8005

\* Cut runners to size on site maintaining an equal 10cm gap at sides.

Cut Plan  $390 \times 400$   
= 15.60m<sup>2</sup>

Taping:-

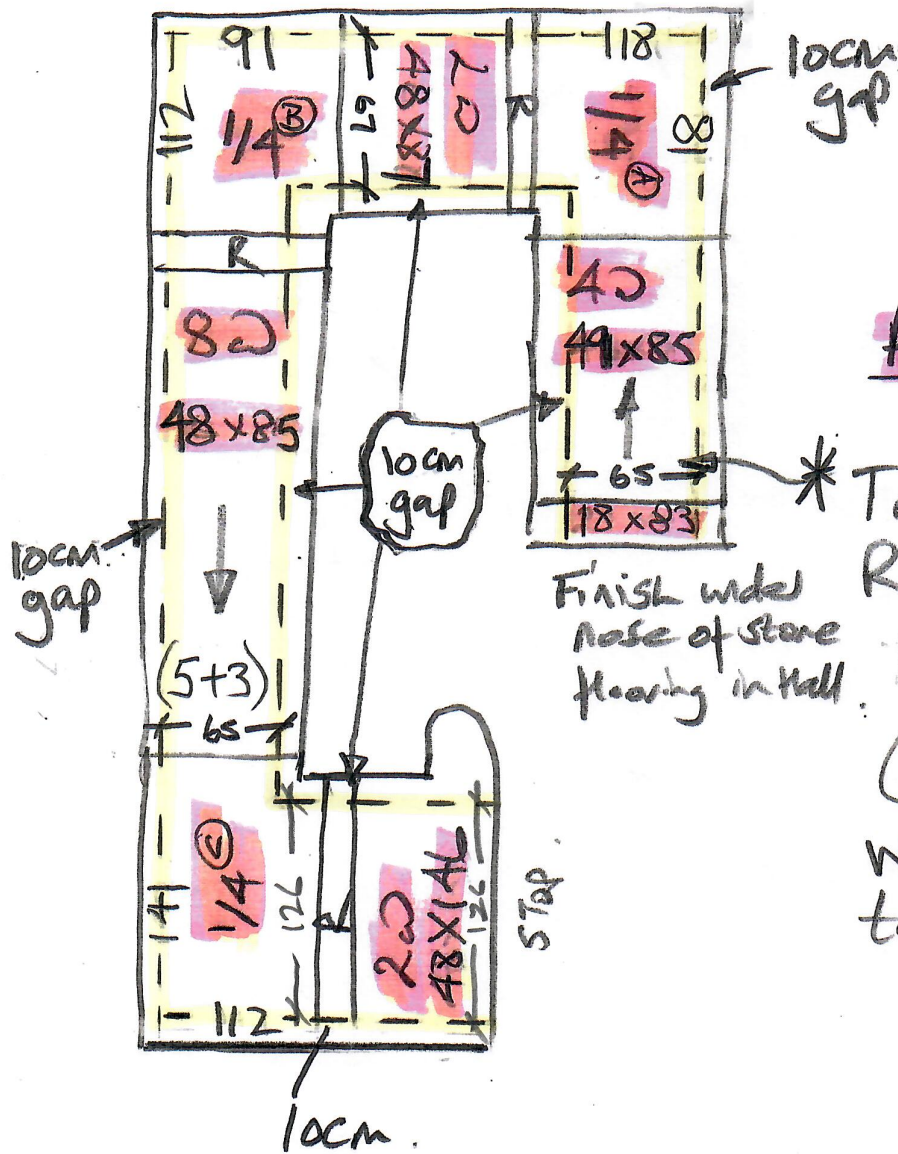
- 240
- 115
- 42
- 167
- 150
- 150
- 235
- 155
- 82
- 162
- 390
- 115
- 42
- 317
- 240
- 240
- 
- 2842
- 120 for 6 metres
- 
- 29.62 Lin metres

Taping = 30 Lin metres

\* only 3cm tape to be visible on surface.

\* Use Blind Gripper on these Runners & stick Carpet all over on Duralift.

# Basement STAIRS



W12771  
Accuro  
The OAKS

2 of 2

Anywhere Bowde - Ice

\* To Be Band edge  
Runner with Approx  
10cm gap at side.  
(Exact width tbc)  
With 3cm Black Cotton  
tape Sewn on sides

Finish with  
nose of stone  
flooring install.